

4

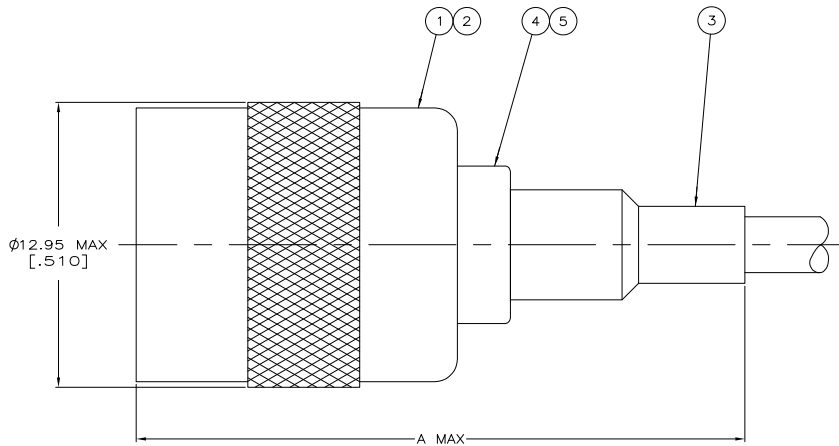
3

2

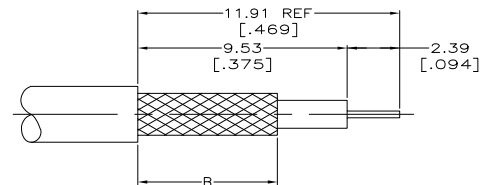
1

THIS DRAWING IS UNPUBLISHED. RELEASED FOR PUBLICATION
 © COPYRIGHT BY TYCO ELECTRONICS CORPORATION. ALL RIGHTS RESERVED.

| LOC | DIST | REVISIONS | | | |
|-----|------|-----------|---------------------------|-----------|--------|
| | | REV | DESCRIPTION | DATE | BY |
| AJ | 16 | 0 | RELEASED PER 0514-0496-04 | 26JAN2005 | JGH/JL |



- △ USE CRIMP TOOL 220190-1
 2. USE INSTRUCTION SHEET 9540



RECOMMENDED STRIP LENGTH

| | | | | | | | | | |
|-----------------------------------|-------------|---------------|----------|-------------------------|----------------|-----------------|-----------------|-----------------------|-------------|
| BELDEN 89248 | 6.35 [.250] | 34.80 [1.370] | 58086-1 | - | - | 9-50427-0 | 221182-8 | 221505-4 | 5221506-6 |
| AT&T 735A | 6.35 [.250] | 29.46 [1.160] | 58174-1 | - | - | 9-328666-2 | 221182-6 | 221505-3 | 5221506-5 |
| RG-179/U, 179A, 179B, 187/U, 187A | 6.35 [.250] | 29.46 [1.160] | 58304-1 | 227194-2 | 222001-2 | 9-328666-0 | 1-221182-2 | 221505-3 | 5221506-3 |
| BELDEN 9231, 8281 | 9.53 [.375] | 34.29 [1.350] | 220189-7 | - | - | 9-50427-2 | 1-221182-0 | 221505-2 | 5221506-2 |
| FOR USE WITH CABLE | B | A | DIE SET | 5 TUBING, PLASTIC QTY=1 | 4 TUBING QTY=1 | 3 FERRULE QTY=1 | 2 CONTACT QTY=1 | 1 PLUG ASSEMBLY QTY=1 | PART NUMBER |

THIS DRAWING IS A CONTROLLED DOCUMENT.

| | | | | | |
|----------------------------|---|--------------------------------|--------------------------------|-------------------------------------|--|
| DIMENSIONS: MM [INCHES] | TO DIMENSIONS UNLESS OTHERWISE SPECIFIED. | DWG J. HAVENER 26JAN2005 | CHK J. HAVENER 26JAN2005 | APPROVED J. LIPPERT 26JAN2005 | NAME Tyco Electronics Tyco Electronics Corporation Harrisburg, PA 17105-3608 |
| | 0 RLC # - 1 RLC # - 2 RLC # Q41 [014] 3 RLC # - 4 RLC # - | APPLICATION SPEC: - | SIZE A2 | DWG NO. 00779 | RESTRICTED TO - |
| MATERIAL - | FINISH - | WEIGHT - | CUSTOMER DRAWING | SCALE 8:1 | SHEET 1 OF 1 |

AMP 1471-9 REV 31MM2000

5221506

A