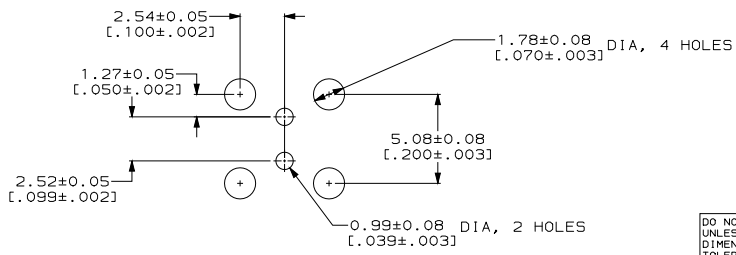
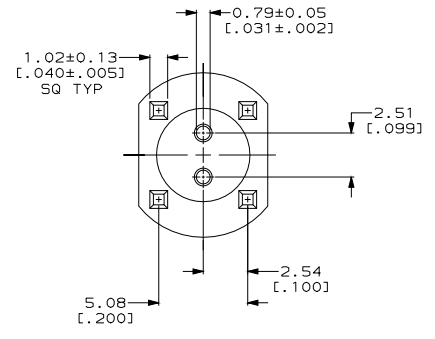
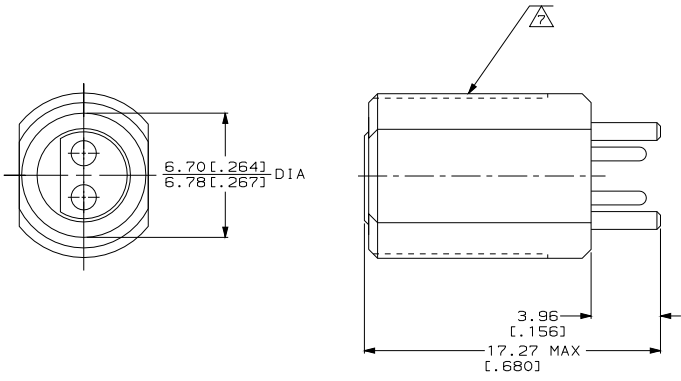


DRAWING MADE IN THIRD ANGLE PROJECTION
 THIS DRAWING IS UNPUBLISHED. RELEASED FOR PUBLICATION, 19
 © COPYRIGHT 19 BY AMP INCORPORATED. ALL INTERNATIONAL RIGHTS RESERVED.

REVISIONS									
LOC	DIST	P	F	ZONE	LTR	DESCRIPTION	DATE	APPD	BM
DF	XO				K	REV PER ECO 06-16763	CT	7-24-06	BM

- 1 BRASS PER QQ-B-626
- 2 PTFE PER MIL-P-19468
- 3 NYLON PER MIL-M-20693
- 4 GOLD PLATE PER MIL-G-45204
- 5 NICKEL PLATE PER QQ-N-290
- 6 SILVER PLATE PER QQ-S-365
- 7 3/8-32 UNEF-2A
- 8 RoHs COMPLIANT PART NUMBER.



SUGGESTED PANEL CUTOUT

5-330873-0
 330873
 PART NO.

DO NOT SCALE PRINT. UNLESS SPECIFIED DIMENSIONS IN mm [INCHES] TOLERANCES ON: 2 PLC DEC ± .20(.008) 3 PLC DEC ± ANGLES ± -	DR 01/08/93 J.DAVIS	AMP AMP Incorporated Harrisburg, PA 17105-3608 NAME CONN, COAX, RF, RECPT PCB, TWIN THD'D SERIES		
	CHK 01/14/93 G.MICHAEL			
MATERIAL 	APPD 01/14/93 G.MICHAEL	SIZE	CAGE CODE	DRAWING NO
	APPD 01/14/93 J.DAVIS	C	00779	C-330873
FINISH 	APPLICATION SPEC -	SCALE	NT5	SHEET 1 OF 1
	WEIGHT .123 OZ	CUSTOMER DRAWING		

THIS DRAWING IS A CONTROLLED DOCUMENT FOR AMP INCORPORATED. IT IS SUBJECT TO CHANGE AND THE CONTROLLING ENGINEERING ORGANIZATION SHOULD BE CONTACTED FOR THE LATEST REVISION.