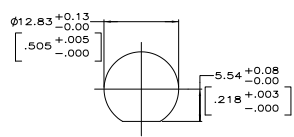
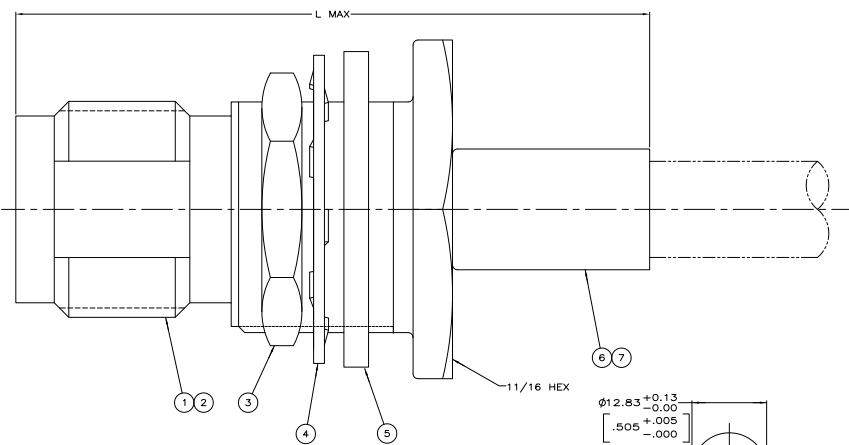
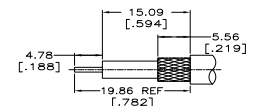


REV	DATE	DESCRIPTION	BY	CHK	APP
16					
F1		REVISED PER ECO-08-01870			MC JH
F2		REVISED PER ECO-08-021510			ESBPP KK AEG

- △ USE HAND TOOL: 354940-1
- 2. MAXIMUM PANEL THICKNESS: 6.10 [.240]
- 3. SEE I.S. 9051
- △ OBSOLETE PARTS: OBSOLETE CIS STREAMLINING PER D.RENAUD/D.SINISI



RECOMMENDED PANEL CUTOUT
SCALE: 3:1



RECOMMENDED STRIP LENGTH
SCALE: 3:1

DESCRIPTION	QTY	UNIT	QTY	UNIT	QTY	UNIT	QTY	UNIT	QTY	UNIT	QTY	UNIT	QTY	UNIT	QTY	UNIT	QTY	UNIT
△ RG-55/U, 56A/U, 56B/U, 223/U	34.93	1.375	220189	1	9-329099-0	329633	1-329632-2	1-329631-2	2-221149-6	414169-1	414169-6							
OBSOLETE RG-142/U, 142A/U, 142B/U, 406/U	34.93	1.375	220189	1	9-329632-0	329633	1-329632-2	1-329631-2	2-221149-6	414169-1	414169-6							
OBSOLETE RG-188/U, 316/U TYPE DOUBLE BRAID	34.93	1.375	58330-1	21427-4	9-329049-0	329633	1-329632-2	1-329631-2	2-221149-6	414169-3	414169-4							
RG-174/U, 188/U, 316/U	34.93	1.375	220210-1	21427-4	9-328666-0	329633	1-329632-2	1-329631-2	2-221149-6	414169-3	414169-3							
OBSOLETE RG-59/U, 59A/U, 59B/U	34.93	1.375	220189-2	-	9-50426-0	329633	1-329632-2	1-329631-2	1-221149-3	414169-2	414169-2							
OBSOLETE RG-55/U, 56A/U, 56B/U, 56C/U, 141/U, 141A/U	34.93	1.375	220189-1	-	9-50427-1	329633	1-329632-2	1-329631-2	2-221149-6	414169-1	414169-1							
FOR USE WITH CABLE	L		DIE SET	△ 7	BUSHING	6	FERRULE	5	GASKET	4	LOCKWASHER	3	JAM NUT	2	CONTACT	1	JACK ASSEMBLY	PART NUMBER
					QTY=1	QTY=1	QTY=1	QTY=1	QTY=1	QTY=1	QTY=1	QTY=1	QTY=1	QTY=1	QTY=1	QTY=1		

THIS DRAWING IS A CONTROLLED DOCUMENT

DESIGNED BY: M. JEFFREY
 DRAWN BY: M. JEFFREY
 CHECKED BY: M. JEFFREY
 DATE: 108-12047

THIS DRAWING IS A CONTROLLED DOCUMENT

DATE: 108-12047
 DRAWING NO: 414168
 CUSTOMER DRAWING

THIS DRAWING IS A CONTROLLED DOCUMENT

DATE: 108-12047
 DRAWING NO: 414168
 CUSTOMER DRAWING