

4

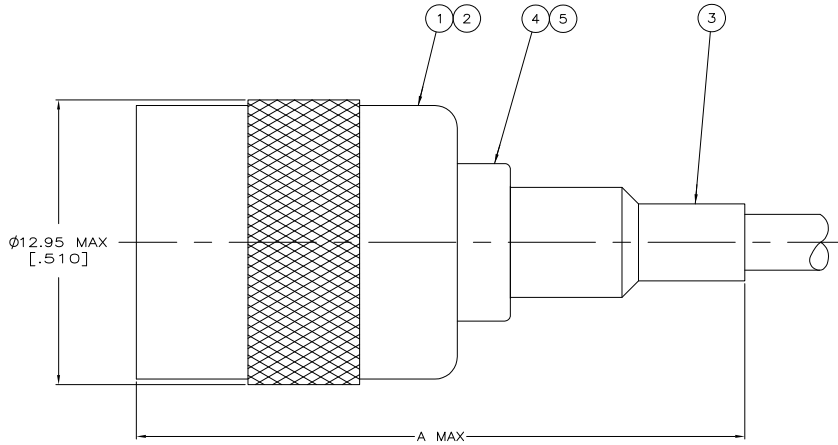
3

2

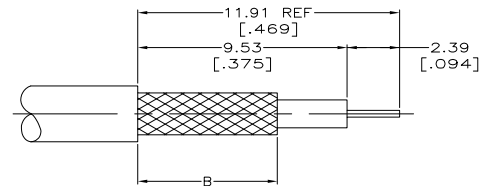
1

THIS DRAWING IS UNPUBLISHED. RELEASED FOR PUBLICATION  
 © COPYRIGHT BY TYCO ELECTRONICS CORPORATION. ALL RIGHTS RESERVED.

LOC	DIST	REVISIONS					
		F	LTR	DESCRIPTION	DATE	BY	APP'D
AJ	00	L1		REV PER ECO 06-029805	2/6/2007	DW	JL



△ USE CRIMP TOOL 220190-1  
 2. USE INSTRUCTION SHEET 9540



RECOMMENDED STRIP LENGTH

OBSOLETE	RG-59/U	6.35 [.250]	29.21 [1.150]	58085-1	-	-	9-50428-0	221182-2	221505-1	9-221506-0					
	BELDEN 89248	6.35 [.250]	34.80 [1.370]	58086-1	-	-	9-50427-0	221182-8	221505-4	221506-6					
	AT&T 735A	6.35 [.250]	29.46 [1.160]	58174-1	-	-	9-328666-2	221182-6	221505-3	221506-5					
OBSOLETE	BELDEN 9145, AT&T 734A	6.35 [.250]	29.21 [1.150]	58085-1	-	-	9-50428-1	1-221182-0	221505-1	221506-4					
	RG-179/U, 179A, 179B, 187/U, 187A	6.35 [.250]	29.46 [1.160]	58304-1	227194-2	222001-2	9-328666-0	1-221182-2	221505-3	221506-3					
	BELDEN 9231, 8281	9.53 [.375]	34.29 [1.350]	220189-7	-	-	9-50427-2	1-221182-0	221505-2	221506-2					
OBSOLETE	RG-59/U	6.35 [.250]	29.21 [1.150]	58085-1	-	-	9-50428-0	221182-2	221505-1	221506-1					
	FOR USE WITH CABLE	B	A	DIE SET	5	TUBING, PLASTIC QTY=1	4	TUBING QTY=1	3	FERRULE QTY=1	2	CONTACT QTY=1	1	PLUG ASSEMBLY QTY=1	PART NUMBER

THIS DRAWING IS A CONTROLLED DOCUMENT.

DRW	M. E. COHNER	9-14-91
CHK	J. T. LIPPERT	9-21-91
APP'D	M. PHILLIPS	9-21-91
PRODUCT SPEC		
APPLICATION SPEC		
WEIGHT		
MATERIAL		
FINISH		

TYCO Electronics Tyco Electronics Corporation  
 Harrisburg, PA 17105-3608

PLUG  
 75 OHM, COMMERCIAL  
 TNC

SIZE: A2 CASE CODE: C=221506 DRAWING NO: 00779  
 CUSTOMER DRAWING SCALE: 8:1 SHEET: 1 of 1 REV: L1

AMP 1471-9 REV 31MM2000

221506

A