

MALCO PART NO. ASTRO PRODUCTS PART NO. GAGE HANDLE  
 010-0150-0000 A 826-1 G0-.0160 RED  
 NO G0-.0185

REVISIONS					
ZONE	LTR	ECN	DESCRIPTION	DATE	APPROVED
	G	31762	REVISED & REDRAWN.	11/21/88	<i>[Signature]</i>
	H	34353	ASTRO PROD P/N W/EC: 826 D	02/21/92	<i>[Signature]</i>
	H1	43876	Update per ECO-09-008101	3/31/09	JDM
	H2	43876	Update per ECO-09-011011	5/06/09	JDM

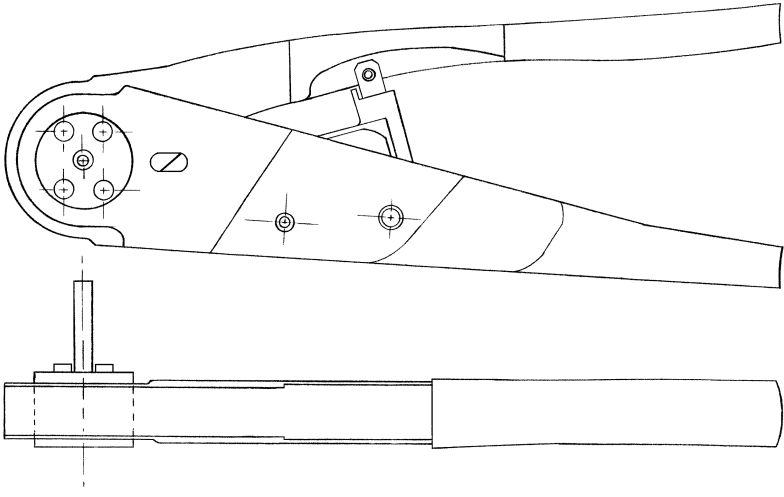
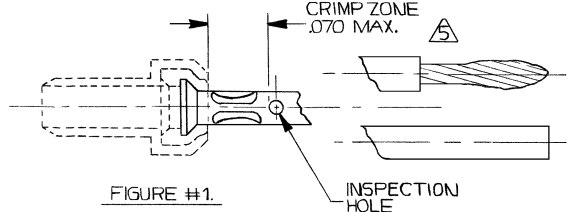


FIGURE #1 DEPICTS:  
 PIN CONTACT ASSY. 096-0525-0001  
 CONTACT FERRULE  
 SUB ASSY: 014-1002-0001  
 SOCKET CONTACT: 014-0009-0002  
 CONTACT FERRULE  
 SUB ASSY: 014-1009-0001



NOTES: UNLESS OTHERWISE SPECIFIED

- FOR USE ON LEPRA/CON CONTACTS 014-1002-0001, 014-1009-0001, 014-1058-0001, 014-1063-0001, 014-1180-0001 & 096-0525-0029
  - AS SUPPLIED BY ASTRO TOOL, BEAVERTON, ORE.
  - MAX. ALLOWABLE CONTACT T.I.R. .005 AFTER CRIMPING
  - AFTER CRIMP TENSILE REQMT'S - 7/38 AWG CU WELD ANNEALED MOST HOLD 4LBS MIN.
- $\Delta$  ENTIRE CRIMP MUST OCCUR IN THE DESIGNATED ZONE (SEE FIG 1) OF EITHER SPECIFIED CONTACT

UNLESS OTHERWISE SPECIFIED DIMENSIONS ARE IN INCHES TOLERANCES ARE: FRACTIONS DECIMALS ANGLES $\pm .XX \pm \pm$ $.XXX \pm$		CONTRACT NO.		<b>MALCO</b> A MICRODOT COMPANY, INC. 220 PASADENA AVE., SO. PASADENA, CALIF. 91030	PROD. CODE <b>936</b> CODE CDM
MATERIAL		APPROVALS	DATE		
FINISH		CHECKED <i>[Signature]</i>	11/18/88	CRIMP TOOL LEPRA CON MINIATURE COAX MICRODOT P/N 010-0150-0000	
NEXT ASSY		PR. ENG. <i>[Signature]</i>	21/Nov 88	SIZE <b>B</b> CODE IDENT NO. <b>98278</b> DRAWING NO. <b>4-1532136-0</b>	
USED ON		APPROVED <i>[Signature]</i>		SCALE SHEET 1 OF 1	
APPLICATION		These drawings and specifications are the property of Microdot Inc. and shall remain the property of Microdot Inc. and shall not be changed, re-reproduced or copied, or used as the basis for the manufacture or sale of any article without written permission of Microdot Inc.			

4 3 2 1