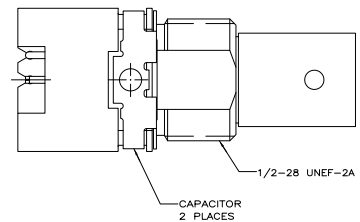
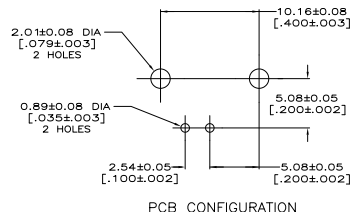
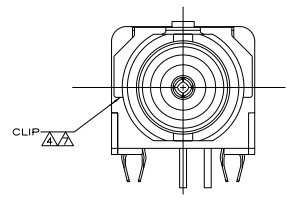
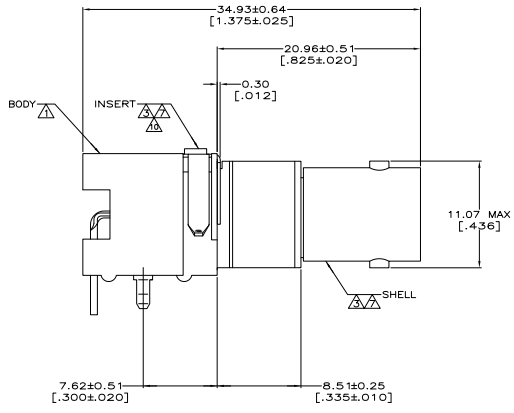
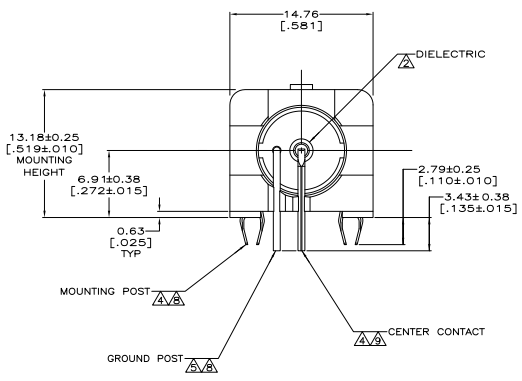


THIS DRAWING IS UNPUBLISHED
 ALL RIGHTS RESERVED

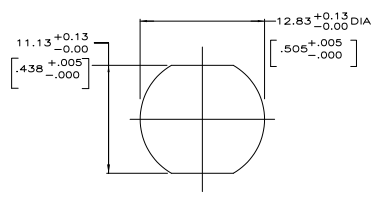
REV	DATE	DESCRIPTION	BY	CHK	APP
AJ	16				
B1		REVISED PER EDD-11-005030			



- ▲ POLYESTER, PBT, BLACK, PER MIL-M-24519.
- ▲ POLYMETHYLPENTENE GENERAL PURPOSE.
- ▲ ZINC PER QQ-Z-363.
- ▲ PHOSPHOR BRONZE PER QQ-B-750.
- ▲ BRASS PER QQ-B-626.
- ▲ BRASS PER ASTM-B-453.
- ▲ NICKEL PL PER QQ-N-290.
- ▲ TIN PLATE PER ASTM-B-545.
- ▲ SELECTIVELY GOLD PLATED ON INTERFACE AREA PER ASTM-B-488, 0.76 [0.00030] THICK, TIN PLATED ON SOLDER TAIL PER ASTM-B-545, ALL OVER NICKEL PLATE PER QQ-N-290.
- ▲ ESD DEVICE, VOLTAGE BREAKDOWN <3.5KVDC.



PCB CONFIGURATION



RECOMMENDED PANEL CUTOUT

9400 pf, 1500 VDC		5415216-1	
CAPACITANCE AND VOLTAGE		PART NO	
THIS DRAWING IS A CONTROLLED DOCUMENT.			
DIMENSIONS mm (INCHES)	APPROVED DATE	CHECKED DATE	DRAWN DATE
108-1269 REVISED PER EDD-11-005030	DATE 10/11/11	DATE 10/11/11	DATE 10/11/11
SEE NOTES 1 - 6	SEE NOTES 7A&10	CUSTOMER DRAWING	DRAWING NO 5415216
		SHEET 5:1	PART 1 OF 1