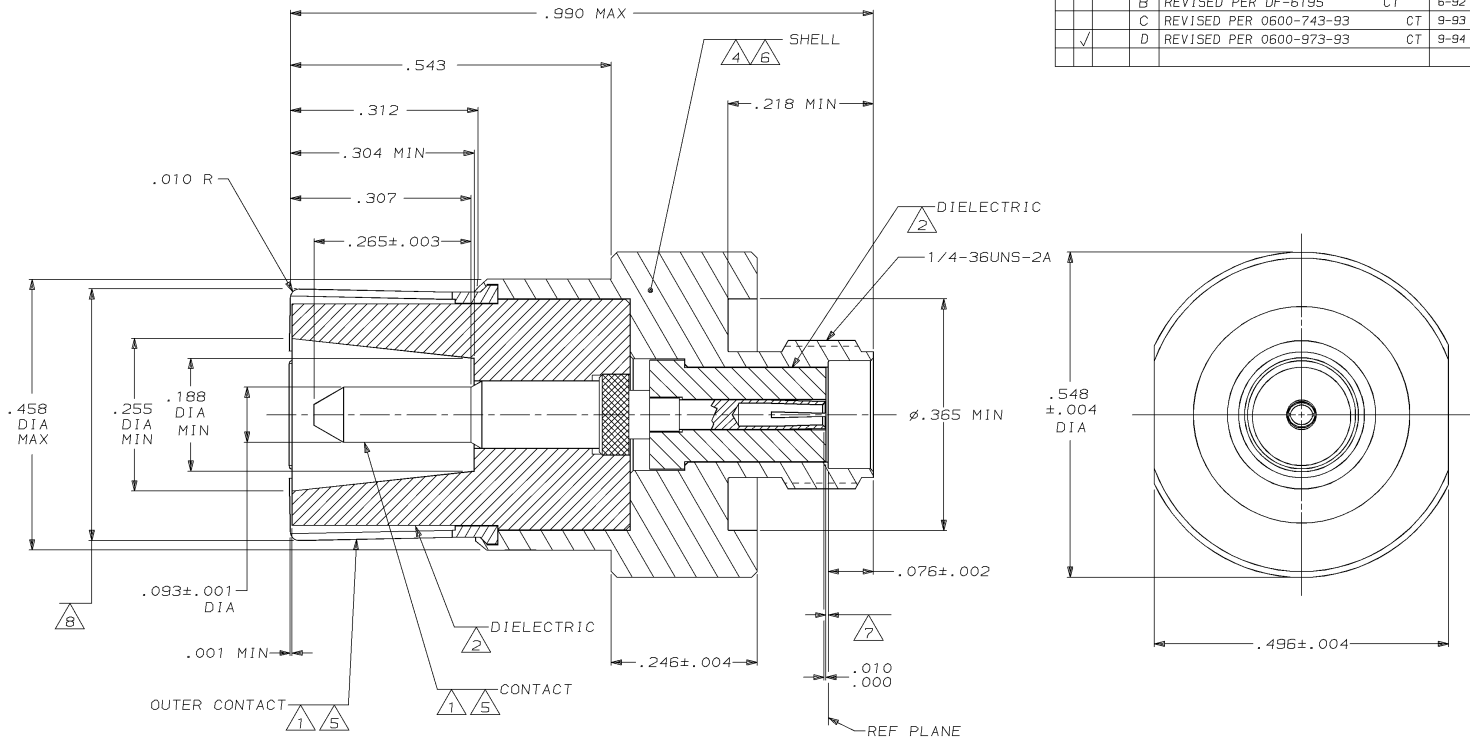


DRAWING MADE IN THIRD ANGLE PROJECTION
 THIS DRAWING IS UNPUBLISHED. RELEASED FOR PUBLICATION
 © COPYRIGHT 19 BY AMP INCORPORATED. ALL INTERNATIONAL RIGHTS RESERVED.

PROJ	LOC	DIST	REV	ZONE	LTR	DESCRIPTION	DATE	APPD
3313	DF	X0						
			0			NPR 90-0063 WAS 89-3321-004	2-9-90	PY
			A			REVISED PER DF4725	4-12-91	RCH
			B			REVISED PER DF-6195 CT	6-92	BS
			C			REVISED PER 0600-743-93 CT	9-93	CS
			D			REVISED PER 0600-973-93 CT	9-94	JC



- 1 BERYLLIUM COPPER PER ASTM-B-196
- 2 PTFE PER ASTM-D-1710
- 3 BRASS PER QQ-B-626
- 4 STAINLESS STEEL PER ASTM-A-582
- 5 GOLD PL PER MIL-G-45204
- 6 PASSIVATED PER QQ-P-35
- 7 DIELECTRIC, MAX PROJECTION .002, .010 MAX RECESSION
- 8 FLARE TO MEET OUTER CONTACT GAGE TEST PER MIL-C-39012/15

		446748-1	
		PART NO	
DO NOT SCALE PRINT. UNLESS SPECIFIED DIMENSIONS IN INCHES TOLERANCES ON : 2 PLC DEC ± - 3 PLC DEC ± .005 ANGLES ± -		AMP INCORPORATED Hartford, Pa. 17105	
DR 2-1-90 P. YEAGER		NAME	
CHK 2-2-90 J. CABARLO		COAX PIN ADAPTER, SIZE 1 MODIFIED	
APPD 2-2-90 J. CABARLO		DRAWING NO	
MATERIAL 1 THRU 4		446748	
APPD 2-2-90 P. YEAGER		SIZE C	
PRODUCT SPEC		FSCM NO 00779	
FINISH 5 6		DRAWING NO 446748	
APPLICATION SPEC		SCALE 8:1	
WEIGHT -		SHEET 1 OF 1	

CUSTOMER DRAWING

AMP 1471-6 REV 3-87

08-SEP-94 10:11:28