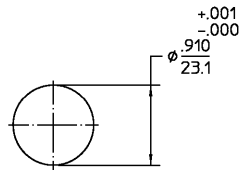
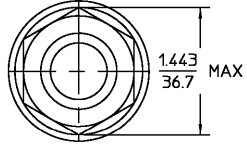


DESIGNED FOR USE WITH FE12RL	REV	DESCRIPTION	DATE	APPROVED
CABLE ENTRY DIAMETER MINIMUM	01	RELEASED	6/8/1998	<i>[Signature]</i>
CONTACT		.023		
HOUSING		.109		

REV	DESCRIPTION	DATE	APPROVED
01	RELEASED	6/8/1998	<i>[Signature]</i>



ELECTRICAL	MECHANICAL	ENVIRONMENTAL
Nominal Impedance (Ohms) 50 ± 1	Interface Dimensions SEE CATALOG	Temperature Rating -65° to $+125^{\circ}$ C
Frequency Range (GHz) DC to 2	Mating Characteristics:	Vibration MIL-STD-202, Method 204, Condition D
Volt Rating (VRMS MAX) Sea Level 335	Insertion (MAX Lbs) 3	Shock ML-STD-202, Method 21B, Condition I
VSWR 1.05 $\pm .01$ f(GHz)	Withdrawal (MIN Oz) 0.5	Thermal Shock MIL-STD-202, Method 107, Condition B
Insertion Loss (dB MAX) $.04 \times \sqrt{f(\text{GHz})}$	Force to Engage (In-Lbs MAX) 3 & Disengage (In-Lbs MAX) 15	Moisture Resistance MIL-STD-202, Method 106
RF Leakage (dB MIN) (Interface Only, Fully Mated) -90 -f(GHz)	Center Contact Captivation Axial (Lbs) 4	Corrosion - MIL-STD-202, Method 101, Condition B
Corona, 70,000 Ft (VRMS MIN) 250	Cable Retention Axial Force (Lbs MIN) 30	
Dielectric Withstanding Voltage (VRMS MIN) Sea Level 675	Torque (In-Oz MIN) 16	
Contact Resistance (Milliohms MAX)	Weight (Grams) TBD	
Center Contact 6.0		
Outer Contact 3.0		
Cable to Housing 0.5		
RF High Potential Sea Level (VRMS MIN) 5 MHz 670		
IR (Megohms MIN) 5000		

COMPONENT	MATERIAL	FINISH
HOUSING MOUNTING NUT LOCKWASHER	STAINLESS STEEL PER ASTM-A484 AND ASTM-A582, TYPE 303	GOLD PLATE PER MIL-G-45204
DIELECTRIC	PTFE FLUOROCARBON PER ASTM-D-1457	N/A
CENTER CONTACT	BERYLLIUM COPPER PER ASTM-B-196 OR ASTM-B-197, ALLOY C17300, CONDITION H	GOLD PLATE PER MIL-G-45204
O-RING	FLUOROSILICONE 60 (DUROMETER) PER MIL-R-25988, CLASS 1, TYPE 1	N/A

UNLESS OTHERWISE SPECIFIED DIMENSIONS ARE IN INCHES	DRAWN BY <i>[Signature]</i> DATE 1/21/98	AMP Incorporated 140 Fourth Avenue Waltham, MA 02451-7599
FRAC. $\pm 1/64$	DEC. $\pm .005$	ANGLES $\pm ^{\circ}$
	CHECKED BY <i>[Signature]</i>	
	APPD BY	
	USE ASSY PROCEDURE	
	NO. AP. TBD	

TITLE OSSP BULKHEAD FEEDTHRU CABLE PLUG-DIRECT SOLDER ATTACHMENT			
SIZE B	CODE IDENT NO. 26805	4703-5010-00	REV 01
SCALE 5:1			SHEET 1 OF 1

CUSTOMER DRAWING

AMP PART # 1252853-1
SHEET 1 OF 1 REV B
PER EC # QJ20-0261-01