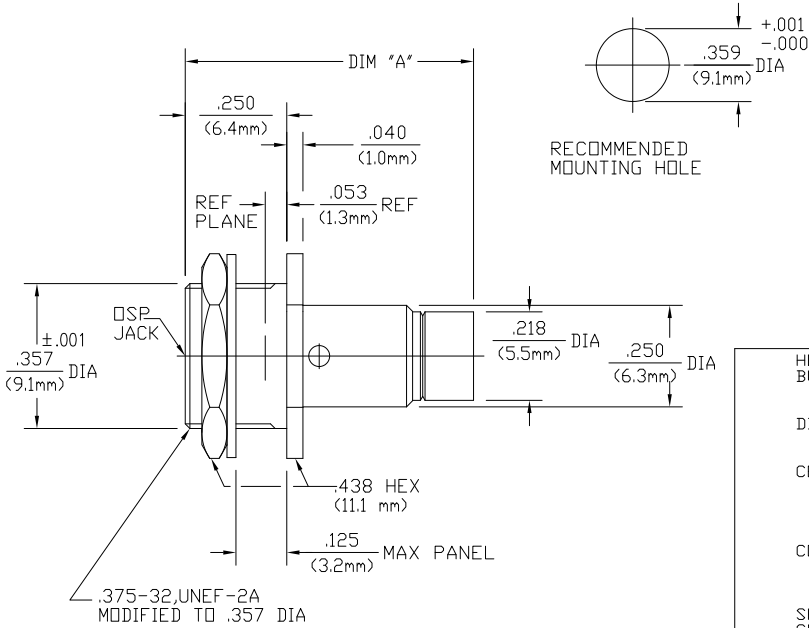


THIS DRAWING IS UNPUBLISHED. RELEASED FOR PUBLICATION
 © COPYRIGHT BY TYCO ELECTRONICS CORPORATION. ALL RIGHTS RESERVED.

LOC	DIST	REVISIONS		
AJ	00	P LTR	DESCRIPTION	DATE
		B	REV PER EDD 07-027471	1/16/2008 DW JL



1059408-1
 PART NUMBER

COMPONENT	MATERIAL	FINISH
HOUSING BUSHING	STAINLESS STEEL PER ASTM-A484 AND ASTM-A582, TYPE 303	PASSIVATE PER ASTM-A380
DIELECTRIC	TFE FLUOROCARBON PER ASTM-D-1457	N/A
CENTER CONTACT	BERYLLIUM COPPER PER ASTM B 196, ALLOY C17300, CONDITION H	GOLD PLATE PER MIL-G-45204 OVER COPPER PLATE PER MIL-C-14550
CONTACT SLEEVE	BERYLLIUM COPPER PER ASTM B 196, ALLOY C17300, CONDITION H	GOLD PLATE PER MIL-G-45204
SHIM CONTACT RING	BERYLLIUM COPPER PER ASTM B 194, ALLOY C17200, CONDITION H	GOLD PLATE PER MIL-G-45204 OVER COPPER PLATE PER MIL-C-14550
LOCKWASHER	PHOSPHOR BRONZE PER QQ-B-750, GRADE B2 OR TIN BRASS PER ASTM-B-591	NICKEL PLATE PER QQ-N-290 OVER COPPER PLATE PER MIL-C-14550
MOUNTING NUT	BRASS PER ASTM-B-16 HALF HARD	NICKEL PLATE PER QQ-N-290 OVER COPPER PLATE PER MIL-C-14550

DIM "A"	
BEFORE CRIMPING	.830 REF (21.1mm)
AFTER CRIMPING	.710 (18.0mm)

NOTES:

- DESIGNED FOR USE WITH .141 DIA (RG 402/U) SEMI-RIGID CABLE
- CAPTURED CENTER CONTACT
- PICTORIAL VIEW IS AFTER CRIMPING
- MINIMUM STRAIGHT CABLE LENGTH .341
- IT IS SUGGESTED TO BEND CABLE PRIOR TO CRIMPING

CABLE ENTRY DIAMETER ID/OD/PL	THIS DRAWING IS A CONTROLLED DOCUMENT.	REV. 8-16-83 D. CAM OK 8-26-83 S. GURLES APP. 8-29-83 NAME	Tyco Electronics Corporation Harrisburg, PA 17105-3608
HOUSING .143 CONTACT .037	DIMENSIONS: INCHES	PRODUCT SPEC: 408-04594	OSP BULKHEAD FEEDTHROUGH CABLE JACK COMPRESSION CRIMP ATTACHMENT (4504-7641-02)
	MATERIAL	RIGHT	RESTRICTED TO
	FINISH	CUSTOMER DRAWING	SCALE 1:1 SHEET 1 of 1 REV B

AMP 1471-9 REV 31MM2000

1059408-1

A