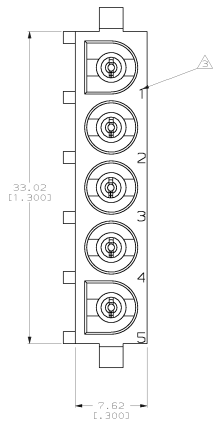
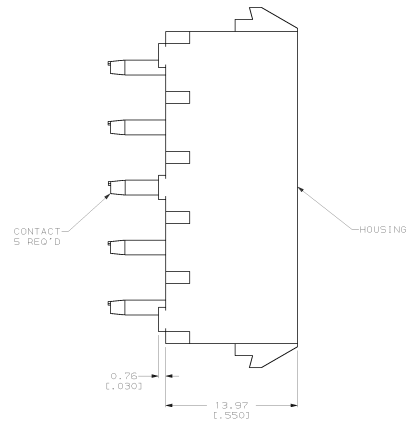
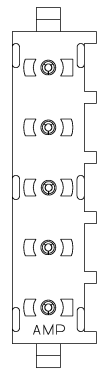


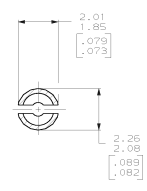
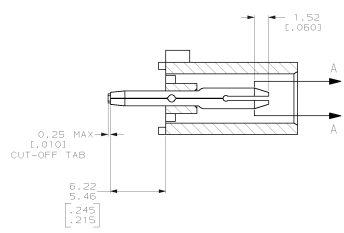
REV. NO.		DATE		DESCRIPTION		DATE	APP.
CM	00	1	204	LW	H	REV PER EC 0038-0449-00	REVISIONS



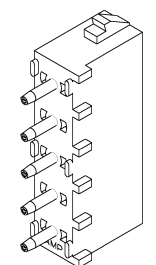
- PARTS COMPLY WITH AMP SOLDERABILITY SPECIFICATION 109-11-3.
- CIRCUIT IDENTIFICATION CHARACTERS ARE ADJACENT TO THE INDICATED CAVITIES, BUT LOCATION AND ORIENTATION MAY DIFFER FROM PRINT.
-
- DIMENSIONS IN BRACKETS ARE IN INCHES.



RECOMMENDED MOUNTING HOLE PATTERN FOR 3.18 (0.125) THICK P.C. BOARD



SECTION A-A SCALE 10:1



3-DIMENSIONAL MODEL NTS

METRIC

PHOSPHOR BRONZE, PRE-TIN	NYLON, UL94V-2, NATURAL	770111-1
PIN CONTACT MATERIAL AND FINISH		PART NO.
DO NOT SCALE PRINT, UNLESS SPECIFIED	26-JAN-1999 G. LEWIS	AMP Incorporated Harrisburg, PA 17105-9608
DIMENSIONS IN mm (INCHES)	CHK 26-JAN-1999 P. 20/MS	
PINS/POLES: 5/1	APPD 28-JAN-1999 M. TRALL	NAME
3 PLC DEC # -	APPD 28-JAN-1999 M. TRALL	PIN HEADER ASSEMBLY, 5 CIRCUIT, UNIVERSAL MATE-N-LOK™
MATERIAL	SEE TABLE	PRODUCT SPEC
FINISH	SEE TABLE	APPLICATION SPEC
		SIZE
		00779
		SCALE
		5:1
		DRAWING NO
		C=770111
		SHEET
		1 OF 1

CUSTOMER DRAWING