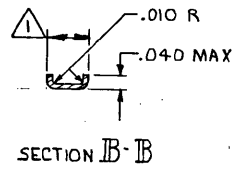
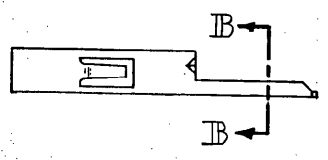
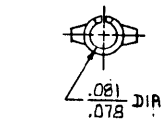
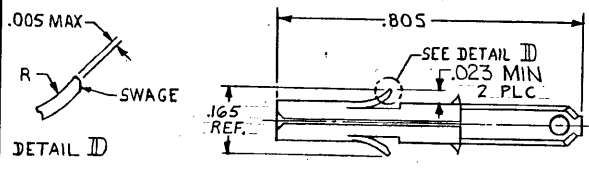


DRAWING MADE IN THIRD ANGLE PROJECTION

© COPYRIGHT 1970 BY AMP INCORPORATED, HARRISBURG, PA.
 ALL INTERNATIONAL RIGHTS RESERVED. AMP INCORPORATED PRODUCTS
 COVERED BY U. S. AND FOREIGN PATENTS AND/OR PATENTS PENDING.



△ FITS INTO "110" SERIES FASTON RECEPTACLE 350871-1.

		REVISIONS				
#	F	ZONE	LTR	DESCRIPTION	DATE	APPROVED
✓	✓		F	REDRAWN & UPDATED M-6457	6-5-81	MSE/JH
✓			G	REVISED AG 57	10-21-81	SR/RS
✓			G1	RESTORATION	4-23-85	ST/RS
✓			H	OBSOLETE -7 PER CM-1372	7-5-88	PA/RS
✓			J	REV PER EC 0730-3607-91	1-6-94	RV/RS
✓			K	REV PER EC 0130-0020-96	8-1-96	JH/RS

PRE-TIN	.012 BRASS	350877-1
FINISH	MATERIAL	PART NO

UNLESS OTHERWISE SPECIFIED DIMENSIONS ARE IN INCHES. TOLERANCES ON: DECIMALS ±.015 ANGLES ±	CONTRACT NO	AMP AMP INCORPORATED Harrisburg, Pa.		
	DR	NAME		
	CHK	SOCKET, SPECIAL, UNIVERSAL MATE-N-LOK™		
	WIRE RANGE	SIZE	CODE IDENT NO	DRAWING NO
INSULATION RANGE	OTHER APPD.	B	00779	350877
		SCALE	SHEET	
		4-1		

CUSTOMER DRAWING