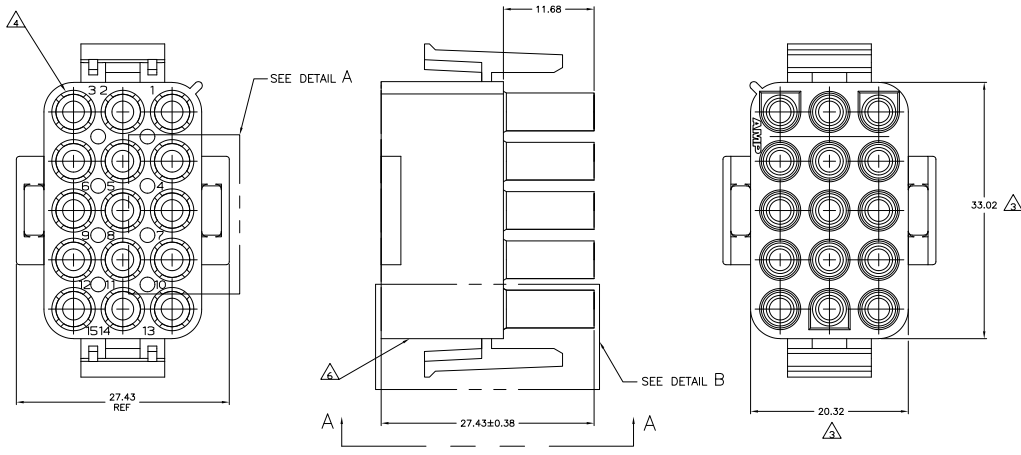
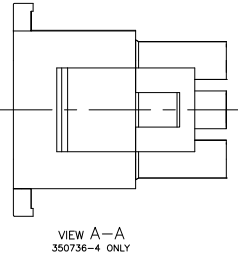


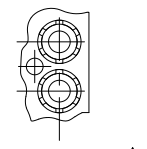
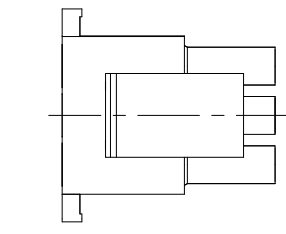
REV	DATE	DESCRIPTION	BY	CHK	APP
CM	5.3				
V3		REVISED PER EDD-12-003860	DMR12	JR	TM



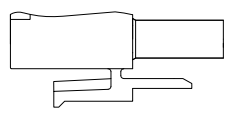
- MATES WITH APPROPRIATE UNIVERSAL MATE-N-LOK™ CAP OR HEADER.
 - SMALL NICKS ARE PERMITTED ON THE CIRCUIT TOWERS WHICH COULD INCREASE THE INITIAL HOUSING MATING FORCE BY UP TO 4.4 NEWTONS [1.0 LBS]. NO INDIVIDUAL NICKED TOWER SHALL INCREASE THIS FORCE BY OVER 2.2 NEWTONS [.5 LBS].
- △ DIMENSION INDICATED IS AS MOLDED. ADDITIONAL GROWTH DUE TO SUBSEQUENT MOISTURE ABSORPTION MAY OCCUR.
 - △ FOUR RIBS EQUALLY SPACED, NO SPECIFIC ORIENTATION, OR SIX RIBS EQUALLY SPACED, NO SPECIFIC ORIENTATION, OPTIONAL.
 - △ NOT MANUFACTURED IN U.S.
 - △ UNDERWRITERS RECOGNIZED COMPONENT LOGO AND CSA CERTIFICATION LOGO TO BE LOCATED ONCE ON EACH SIDE OF HOUSING.



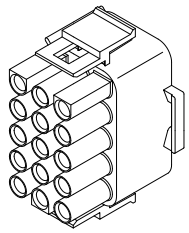
VIEW A-A
350736-4 ONLY



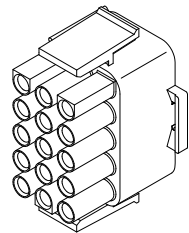
PARTIAL DETAIL A
OPTIONAL CONSTRUCTION



DETAIL B
350736-4 ONLY



350736-4 3-DIMENSIONAL MODEL
NTS



3-DIMENSIONAL MODEL
NTS

BLACK	1-350736-9
GRAY	1-350736-8
BLUE	1-350736-6
GREEN	1-350736-5
YELLOW	1-350736-4
ORANGE	1-350736-3
RED	1-350736-2
BROWN	1-350736-1
△	350736-4
NATURAL	350736-1
COLOR	PART NUMBER



THIS DRAWING IS A CONTROLLED DOCUMENT.

APPROVED FOR RELEASE	DATE	BY	CHK	APP

DIMENSIONS: mm
 UNLESS OTHERWISE SPECIFIED
 DIMENSIONS ARE IN MILLIMETERS
 DECIMALS: .1, .2, .3, .4, .5, .6, .7, .8, .9, 1.0, 1.2, 1.5, 2.0, 2.5, 3.0, 4.0, 5.0, 6.0, 8.0, 10.0
 ANGLES: .5, 1.0, 1.5, 2.0, 3.0, 4.0, 5.0, 6.0, 8.0, 10.0, 15.0, 20.0, 25.0, 30.0, 45.0, 60.0, 90.0, 120.0, 150.0, 180.0
 TOLERANCES: .1, .2, .3, .4, .5, .6, .7, .8, .9, 1.0, 1.2, 1.5, 2.0, 2.5, 3.0, 4.0, 5.0, 6.0, 8.0, 10.0
 FINISHES: .1, .2, .3, .4, .5, .6, .7, .8, .9, 1.0, 1.2, 1.5, 2.0, 2.5, 3.0, 4.0, 5.0, 6.0, 8.0, 10.0
 MATERIAL: 949-0

THIS DRAWING IS A CONTROLLED DOCUMENT.
 DATE: 10/27/99
 DRAWING NO: A100779
 CUSTOMER DRAWING: G=350736
 SCALE: 4:1
 SHEET: 1 OF 1
 REV: V3

TE Connectivity
 PLUG,
 15 CIRCUIT,
 UNIVERSAL MATE-N-LOK™