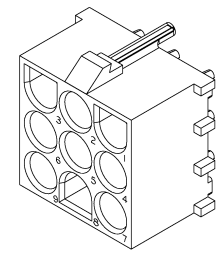
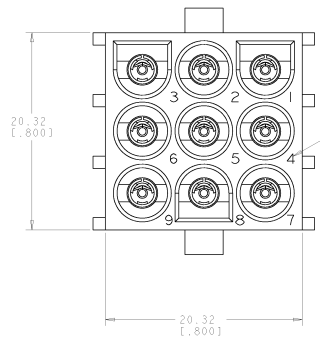
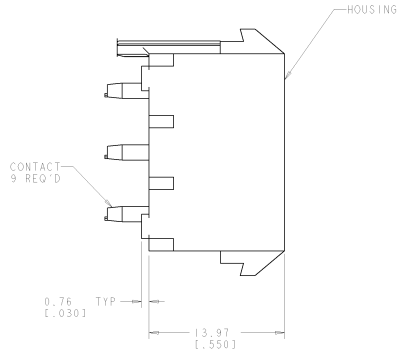
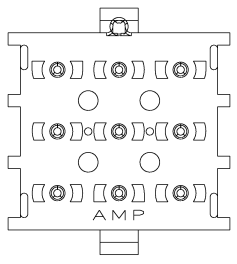
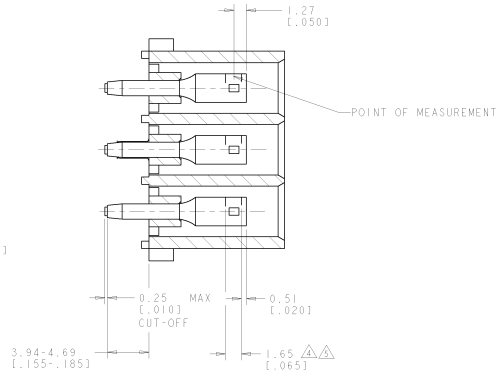
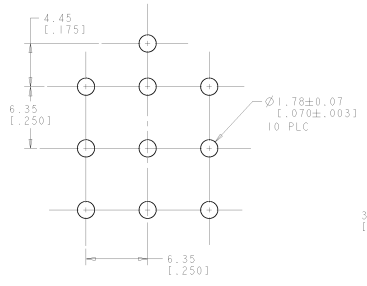


REV	DATE	DESCRIPTION	BY	CHK	APP
00					
1		REVISED PER 0638-0276-03	09-08-94	PK	SR
2		REVISED PER 0638-1094-04	07/08/04	OT/MS	PK SR

- PARTS COMPLY TO AMP SOLDERABILITY SPECIFICATION 109-11-3.
- CIRCUIT IDENTIFICATION CHARACTERS ARE ADJACENT TO THE INDICATED CAVITIES, BUT LOCATION AND ORIENTATION MAY DIFFER FROM PRINT.
- DIMENSIONS IN BRACKETS ARE IN INCHES.
- CONTACT IS STAMPED FROM PRE-PLATED STOCK WHICH IS PLATED OVERALL WITH 0.00127 [.000050] NICKEL; THEN STRIPED WITH 0.0076 [.000030] GOLD IN CONTACT AREA INDICATED AND MATTE TIN LEAD ON SOLDER TAIL END.
- CONTACT IS STAMPED FROM PRE-PLATED STOCK WHICH IS PLATED OVERALL WITH 0.00127 [.000050] NICKEL; THEN STRIPED WITH 0.0076 [.000030] GOLD IN CONTACT AREA INDICATED AND MATTE TIN ON SOLDER TAIL END.



3 DIMENSIONAL MODEL SCALE 4:1



PIN CONTACT MATERIAL AND FINISH	HOUSING MATERIAL	PART NUMBER
PHOSPOR BRONZE, GOLD	NYLON, UL94V-0	643426-3
PHOSPOR BRONZE, GOLD	NYLON, UL94V-0	643426-2
PHOSPOR BRONZE, PRE-TIN	NYLON, UL94V-0	643426-1

RECOMMENDED MOUNTING HOLE PATTERN FOR 1.57 [.062] THICK P.C. BOARD



STANDARD: MIL-STD-883C DIMENSIONS: INCHES FINISH: PLATED MOUNTING: SEE TABLE PARTS: SEE TABLE	DATE: JUL 2003 BY: BUDGET CHECKED: BUDGET APPROVED: BUDGET CUSTOMER SPEC: A PART: 643426 CUSTOMER DRAWING: 511	Sigma Electronics Harrisburg, PA 17105-8808 HEADER ASSEMBLY, SOCKET, POLARIZED, 9 CIRCUIT, UNIVERSAL MATE-N-LOK™ 643426	DRAWN BY: J CHECKED BY: J APPROVED BY: J
---	--	--	--