

4

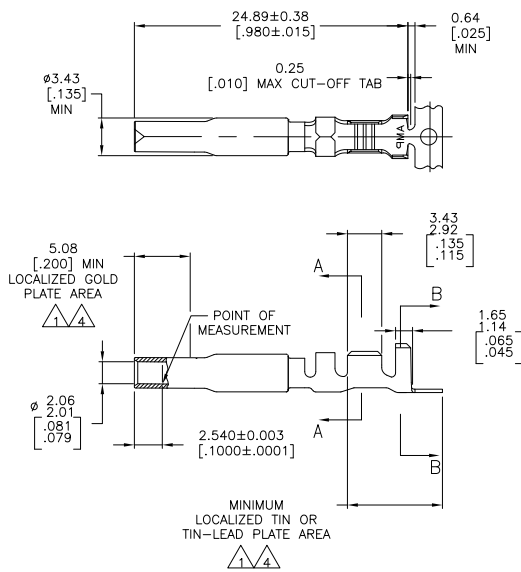
3

2

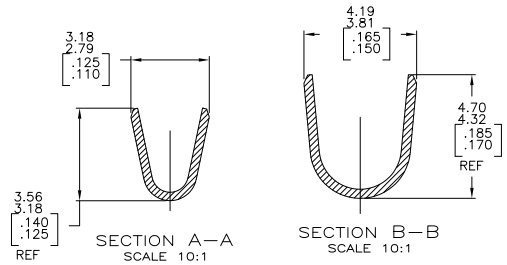
1

THIS DRAWING IS UNPUBLISHED. RELEASED FOR PUBLICATION.
 © COPYRIGHT - By - ALL RIGHTS RESERVED.

LOC	DIST	REVISIONS		
F	LR	DESCRIPTION	DATE	BY
CM	0			
	E1	REVISED PER ECO-11-004820	11MAR11	RK HMR



- 1. Δ 0.00076[.000030] MIN GOLD AT POINT OF MEASUREMENT IN THE LOCALIZED GOLD PLATE AREA, 0.00127[.000050] MIN TIN-LEAD IN TIN-LEAD PLATE AREA, 0.00127[.000050] MIN NICKEL UNDERPLATE ON ENTIRE CONTACT.
- 2. WIRE RANGE: .5-2mm² [20-14 AWG]. INSULATION RANGE: 1.52-3.30[.060-.130] DIA.
- 3. DIMENSIONS IN BRACKETS ARE IN INCHES.
- 4. Δ 0.00076[.000030] MIN GOLD AT POINT OF MEASUREMENT IN THE LOCALIZED GOLD PLATE AREA, 0.00127[.000050] MIN TIN IN TIN PLATE AREA, 0.00127[.000050] MIN NICKEL UNDERPLATE ON ENTIRE CONTACT.



GOLD Δ	0.30 [0.012]	PH BRZ	1-770008-0
GOLD Δ	0.30 [0.012]	PH BRZ	770008-4
PRE-TIN	0.30 [0.012]	PH BRZ	770008-3
FINISH	MATERIAL		PART NO.

THIS DRAWING IS A CONTROLLED DOCUMENT.

DIMENSIONS:	mm [INCHES]	TOLERANCES UNLESS OTHERWISE SPECIFIED:	0 PLC ± .005	1 PLC ± .003	2 PLC ± .002	3 PLC ± .001	4 PLC ± .0005	ANGLES ± .5°						
MATERIAL:	SEE TABLE	FINISH:	SEE TABLE	DRW:	K. SALMON	20JAN93	CHK:	S. SWING	20JAN93	APPD:	M. TRULL	01APR93	NAME:	
APPLICATION SPEC:		PRODUCT SPEC:		SIZE:	A2	QAGE CODE:	C=770008	DRAWING NO:		RESTRICTED TO:				
CUSTOMER DRAWING		SCALE:	4:1	SHEET:	1 of 1	REV:	E1							

