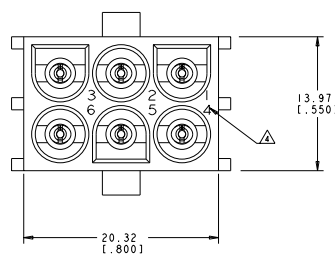
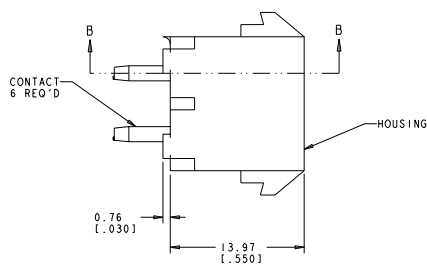
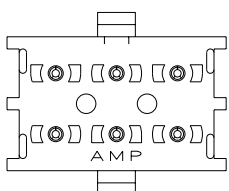
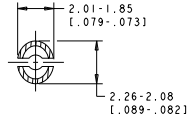
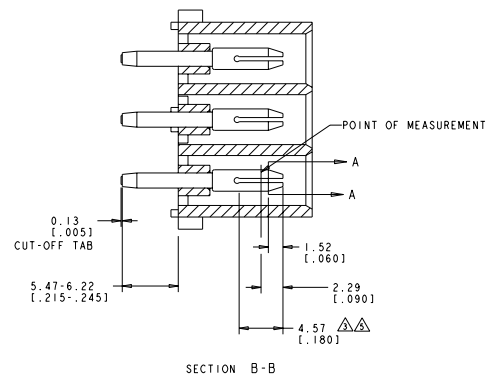


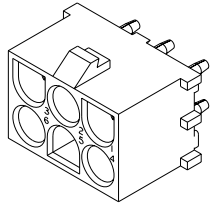
REV	DATE	DESCRIPTION	BY	CHK	APP
00					
1		REVISED PER 0528-1100-04			



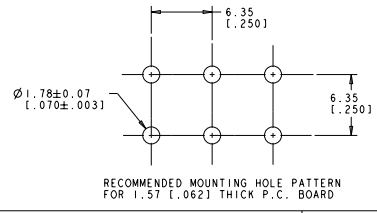
1. PARTS MATE WITH HOUSING 480704.
2. PARTS COMPLY TO AMP SOLDERABILITY SPECIFICATION 109-11-3.
- △ CONTACT IS PLATED OVERALL WITH 0.00127 [.000050] NICKEL, THEN 0.00076 [.000030] GOLD OVER CONTACT LENGTH INDICATED AND TIN LEAD ON SOLDER TAIL END.
- △ CIRCUIT IDENTIFICATION CHARACTERS ARE ADJACENT TO THE INDICATED CAVITIES, BUT LOCATION AND ORIENTATION MAY DIFFER FROM PRINT.
- △ CONTACT IS PLATED OVERALL WITH 0.00127 [.000050] NICKEL, THEN 0.00076 [.000030] GOLD OVER CONTACT LENGTH INDICATED AND MATTE TIN ON SOLDER TAIL END.
6. DIMENSIONS IN BRACKETS ARE IN INCHES.



SECTION A-A
SCALE 10:1



3 DIMENSIONAL MODEL
SCALE 4:1



RECOMMENDED MOUNTING HOLE PATTERN
FOR 1.57 [.062] THICK P.C. BOARD

PIN CONTACT MATERIAL AND FINISH	HOUSING MATERIAL AND COLOR	PART NUMBER
PHOSPOR BRONZE, GOLD △	NYLON, UL94V-2, NATURAL	350585-4
PHOSPOR BRONZE, GOLD △	NYLON, UL94V-2, NATURAL	350585-2
PHOSPOR BRONZE, PRE-TIN	NYLON, UL94V-2, NATURAL	350585-1



DIMENSIONS IN INCHES DECIMAL FRACTIONS FRACTIONS SEE TABLE	DIMENSIONS IN MILLIMETERS DECIMAL FRACTIONS FRACTIONS SEE TABLE	PART NUMBER 007719	TITLE PIN HEADER ASSEMBLY, 6 CIRCUIT, UNIVERSAL MATE-N-LOK (TM)	DATE CODE 007719	QUANTITY 350585	DRAWN BY S-1	CHECKED BY R
---	--	-----------------------	--	---------------------	--------------------	-----------------	-----------------