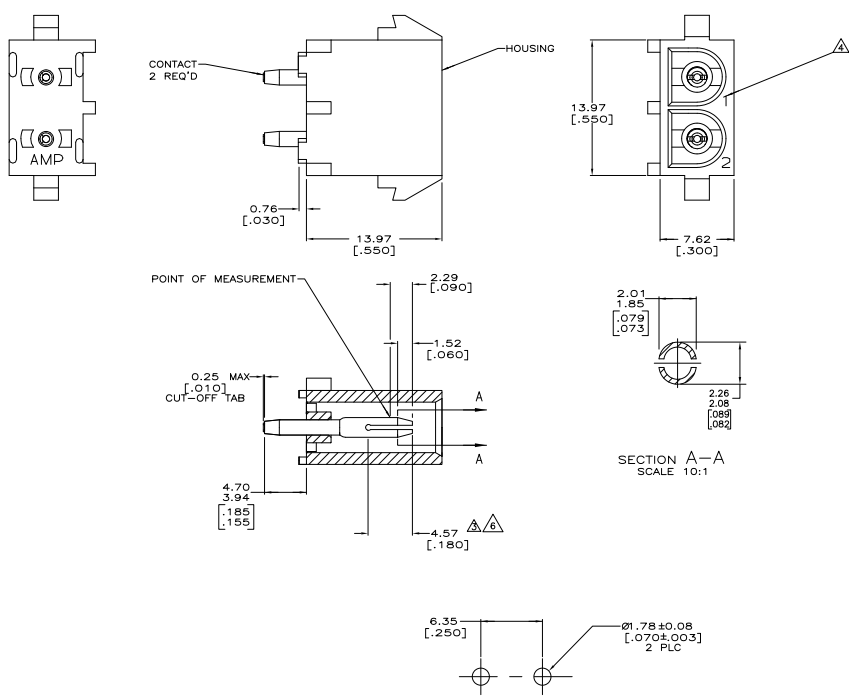


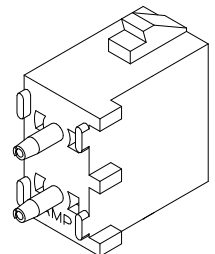
THIS DRAWING IS UNPUBLISHED  
 ALL RIGHTS RESERVED

REV	DATE	DESCRIPTION	BY	CHK	APP
CM 00	Y1	REVISED PER ECO-11-004587	11MMR11	RK	HMR



1. PARTS COMPLY TO AMP SOLDERABILITY SPECIFICATION 109-11-3.

- △ CONTACT IS PLATED OVERALL WITH 0.00127 [0.00050] NICKEL, THEN 0.00076 [0.00030] GOLD OVER CONTACT LENGTH INDICATED AND MATTE TIN-LEAD ON SOLDER TAIL END.
- △ CIRCUIT IDENTIFICATION CHARACTERS ARE ADJACENT TO THE INDICATED CAVITIES, BUT LOCATION AND ORIENTATION MAY DIFFER FROM PRINT.
- △ DIMENSIONS IN BRACKETS ARE IN INCHES.
- △ CONTACT IS PLATED OVERALL WITH 0.00127 [0.00050] NICKEL, THEN 0.00076 [0.00030] GOLD OVER CONTACT LENGTH INDICATED AND MATTE TIN ON SOLDER TAIL END.



PHOSPHOR BRONZE, GOLD △	NYLON, UL94V-2 NATURAL	350428-4
PHOSPHOR BRONZE, GOLD △	NYLON, UL94V-2 NATURAL	350428-2
PHOSPHOR BRONZE, PRE-TIN	NYLON, UL94V-2 NATURAL	350428-1
PIN CONTACT MATERIAL AND FINISH	HOUSING MATERIAL	PART NUMBER



THIS DRAWING IS A CONTROLLED DOCUMENT.		DR. CARPENTER	3/24/2003	<b>TE Connectivity</b>
DIMENSIONS IN MILLIMETERS		DR. SIDGILL	3/24/2003	
DRAWN BY: DR. SIDGILL		DATE: 3/24/2003	PIN HEADER ASSEMBLY, 2 CIRCUIT	
CHECKED BY: DR. SIDGILL		DATE: 3/24/2003	REVISED TO: ---	
APPROVED BY: DR. SIDGILL		DATE: 3/24/2003	DRAWING NO: A100779	
CUSTOMER DRAWING		DATE: 3/24/2003	REVISED TO: ---	