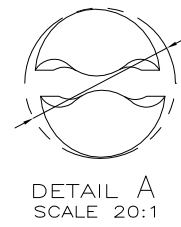
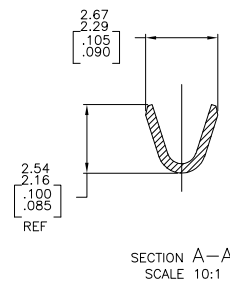
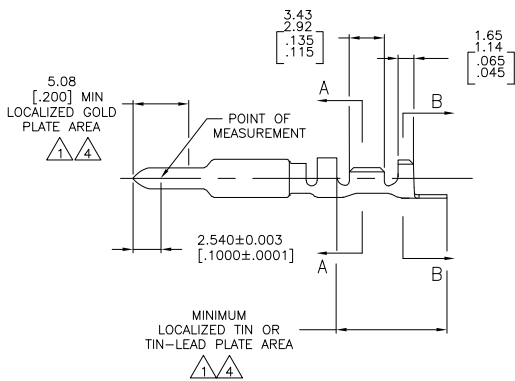
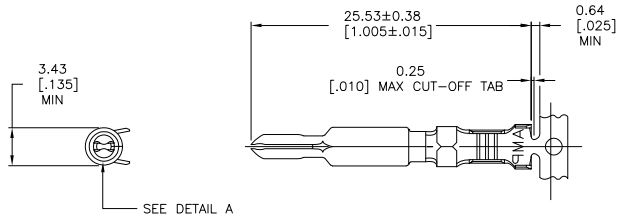


THIS DRAWING IS UNPUBLISHED. RELEASED FOR PUBLICATION.  
 © COPYRIGHT BY TYCO ELECTRONICS CORPORATION. ALL RIGHTS RESERVED.

LOC	DIST	REVISIONS		
F	LTR	DESCRIPTION	DATE	MIN
CM	00			
	F	EC 0038 0215 05	22SEP05	BSV/RJ



- △ 0.00076[.000030] MIN GOLD AT POINT OF MEASUREMENT IN THE LOCALIZED GOLD PLATE AREA, 0.00127[.000050] MIN TIN-LEAD IN TIN-LEAD PLATE AREA, 0.00127[.000050] MIN NICKEL UNDERPLATE ON ENTIRE CONTACT.
- 2. WIRE RANGE: 0.2-1mm<sup>2</sup> [24-18 AWG]  
INSULATION RANGE: 1.02-2.54[.040-.100] DIA.
- 3. DIMENSIONS IN BRACKETS ARE IN INCHES.
- △ 0.00076[.000030] MIN GOLD AT POINT OF MEASUREMENT IN THE LOCALIZED GOLD PLATE AREA, 0.00127[.000050] MIN TIN IN TIN PLATE AREA, 0.00127[.000050] MIN NICKEL UNDERPLATE ON ENTIRE CONTACT.

FINISH	MATERIAL	PART NUMBER
GOLD △	0.30 [.012] BRASS	1-770009-0
GOLD △	0.30 [.012] BRASS	770009-2
PRE-TIN	0.30 [.012] BRASS	770009-1

**METRIC**

THIS DRAWING IS A CONTROLLED DOCUMENT.		DWG: S. CAREENTER 20MAY03 CHK: C. JONES 20MAY03 C. JONES 20MAY03 APD: C. JONES 20MAY03 PRODUCT SPEC: --- APPLICATION SPEC: --- WEIGHT: --- FINISH: ---		Tyco Electronics Corporation Harrisburg, PA 17105-3608 PIN, UNIVERSAL MATE-N-LOK(TM) II SIZE: A2 CAGE CODE: 00779 DRAWING NO: C-770009 RESTRICTED TO: --- CUSTOMER DRAWING SCALE: 4:1 SHEET: 1 of 1 REV: F	
--	--	---	--	--	--

AMP 1471-9 REV 31MAR2000