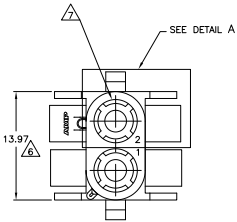
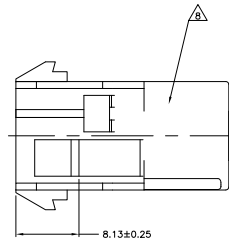
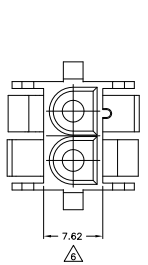
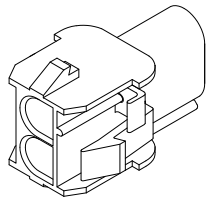
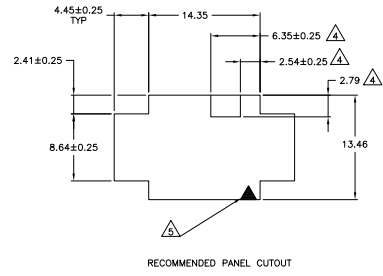
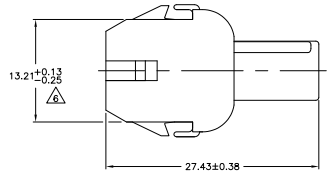
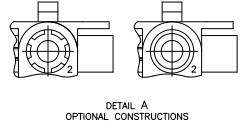


THIS DRAWING IS UNPUBLISHED
 ALL RIGHTS RESERVED

REV	DATE	DESCRIPTION	BY	CHK	APP
CM 53					
AG2		REVISED PER EDD-11-004587			



- MATES WITH APPROPRIATE UNIVERSAL MATE-N-LOK™ PLUG.
 - RECOMMENDED PANEL THICKNESS 0.76 - 2.29.
 - PANEL MUST BE PUNCHED SO THAT THE HOUSING ENTERS THE PANEL IN THE SAME DIRECTION AS THE PUNCH.
- △ OPTIONAL FOR KEYING HOUSING IN PANEL.
 - △ CIRCUIT NUMBER 1 LOCATION.
 - △ DIMENSION INDICATED IS AS MOLDED. ADDITIONAL GROWTH DUE TO SUBSEQUENT MOISTURE ABSORPTION MAY OCCUR.
 - △ FOUR RIBS EQUALLY SPACED, NO SPECIFIC ORIENTATION. NO RIBS OR SIX RIBS EQUALLY SPACED, NO SPECIFIC ORIENTATION, OPTIONAL.
 - △ UNDERWRITERS RECOGNIZED COMPONENT LOGO AND CSA CERTIFICATION LOGO TO BE LOCATED ONCE EACH ON SIDE OF HOUSING.
 - △ OBSOLETE PARTS: OBSOLETE CIS STREAMLINING PER D.RENAUD/D.SINIS)



3-DIMENSIONAL MODEL
NTS

	4.45	.175	27.43	1.080
	2.79	.110	14.35	.565
	2.54	.100	13.97	.550
	2.41	.095	13.46	.530
	2.29	.090	13.21	.520
	0.76	.030	8.64	.340
	0.38	.015	8.13	.320
	0.25	.010	7.62	.300
	0.13	.005	6.35	.250
MM	IN	MM	IN	

CONVERSION TABLE

BLACK	1-480699-9
GREY	1-480699-8
BLUE	1-480699-6
GREEN	1-480699-5
YELLOW	1-480699-4
ORANGE	1-480699-3
RED	1-480699-2
BROWN	1-480699-1
NATURAL	1-480699-0
COLOR	PART NO.

△ SUPERSEDED BY 1-480699-0
 △ OBSOLETE

THIS DRAWING IS A CONTROLLED DOCUMENT. DATE: 11/11/11 BY: [Signature] CHECKED: [Signature] DATE: [Signature]

TE Connectivity
 CAP.2 CIRCUIT,
 UNIVERSAL MATE-N-LOK (TM)

SIZE: 4.1 DATE: 11/11/11 DRAWING NO: A100779G-480699-1
 CUSTOMER DRAWING: [Signature] DATE: 4.1 SHEET: 1 OF 1

