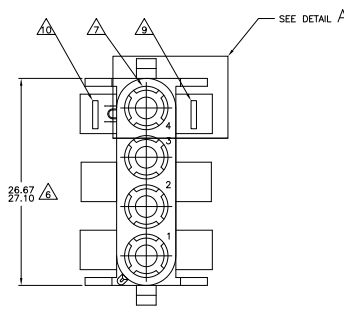
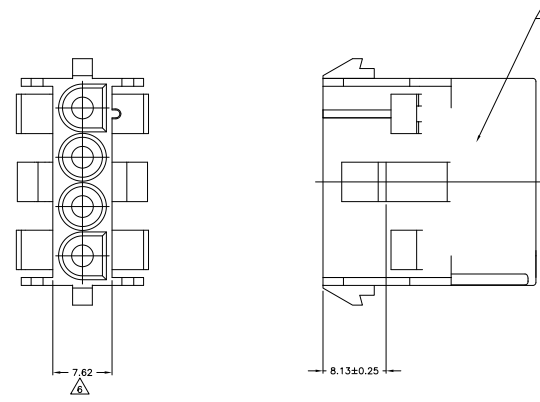
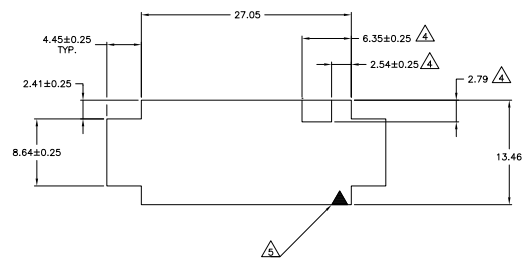
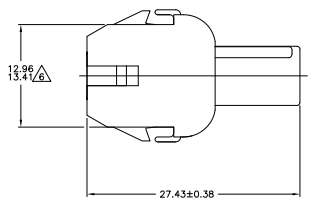
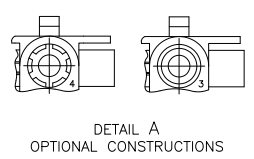


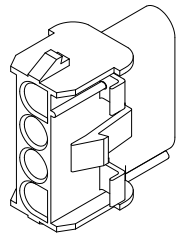
REV	DATE	DESCRIPTION	BY	CHK	APP
CM	00				
AM2		REVISED PER EDD-11-004587			



- MATES WITH APPROPRIATE UNIVERSAL MATE-N-LOK™ PLUG.
  - RECOMMENDED PANEL THICKNESS 0.76 - 2.29.
  - PANEL MUST BE PUNCHED SO THAT THE HOUSING ENTERS THE PANEL IN THE SAME DIRECTION AS THE PUNCH.
- △ OPTIONAL FOR KEYING HOUSING IN PANEL.
  - △ CIRCUIT NUMBER 1 LOCATION.
  - △ UPPER DIMENSION REPRESENTS POTENTIAL MAXIMUM GROWTH DUE TO MOISTURE ABSORPTION.
  - △ FOUR RIBS EQUALLY SPACED. NO SPECIFIC ORIENTATION, NO RIBS OR SIX RIBS EQUALLY SPACED. NO SPECIFIC ORIENTATION, OPTIONAL.
  - △ UNDERWRITERS RECOGNIZED COMPONENT LOGO AND CSA CERTIFICATION LOGO TO BE LOCATED ONCE EACH ON SIDE OF HOUSING.
  - △ MANUFACTURING LOCATION ID (OPTIONAL).
  - △ TRADEMARK LOCATION (AMP OR TE CONNECTIVITY).
  - △ OBSOLETE PARTS: OBSOLETE CIS STREAMLINING PER D.RENAUD/D.SINISI



RECOMMENDED PANEL CUT OUT



3-DIMENSIONAL MODEL NTS

MM	IN	MM	IN
7.62	.300	27.43	1.080
6.35	.250	27.10	1.067
4.45	.175	27.05	1.065
2.79	.110	26.67	1.050
2.54	.100	13.46	.530
2.41	.095	13.41	.528
2.29	.090	12.96	.510
0.76	.030	8.64	.340
0.38	.015	8.13	.320

CONVERSION TABLE

COLOR	PART NO
BLACK	1-480703-9
GRAY	1-480703-8
BLUE	1-480703-6
GREEN	1-480703-5
YELLOW	1-480703-4
ORANGE	1-480703-3
RED	1-480703-2
BROWN	1-480703-1
NATURAL	1-480703-0
COLOR	PART NO

THIS DRAWING IS A CONTROLLED DOCUMENT.

DATE: 11/11/11  
 DRAWING NO: 00779  
 REV: 2

TE Connectivity  
 CAP. 4 CIRCUIT,  
 UNIVERSAL MATE-N-LOK(TM)

00779 480703



