

4

3

2

1

THIS DRAWING IS UNPUBLISHED.

RELEASED FOR PUBLICATION

2008

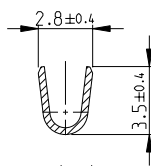
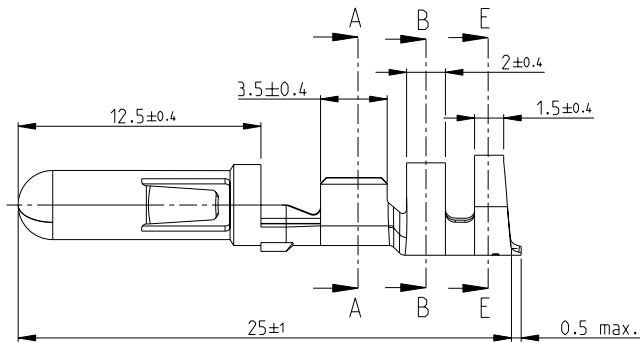
COPYRIGHT 2008

ALL RIGHTS RESERVED.

LOC AL
DIST 2

REVISIONS

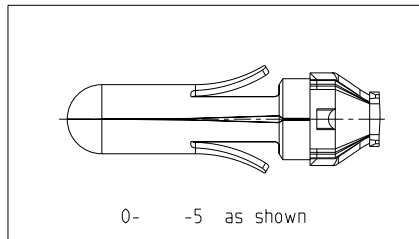
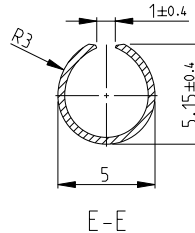
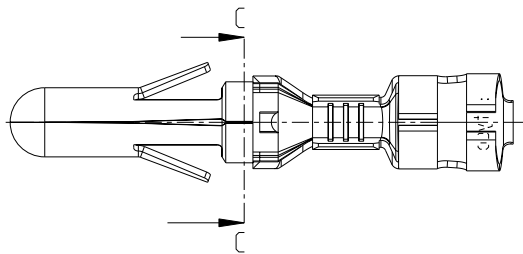
P	LTR	DESCRIPTION	DATE	DWN	APVD
Y		New drawing released	12NOV2008	J.S	P.E.G
Y1		REVISED PER ECO-09-026495	17DEC2009	KK	AEG
Y2		ECR-10-026537	15JUN2011	KK	HMR



⚠ OBSOLETE PARTS: OBSOLETE CIS STREAMLINING PER D.RENAUD/D.SINISI

Terminal Conductor: FLK-Cable
Conductor: F-Crimp
Insulation: F-Crimp

Cross-section in mm ²		0.50	0.75	1.00	1.50	2.00	2.50	3.00	4.00	6.00
Single connection										
0.50	X	X	X	X	X					
0.75	X	X	X	X						
1.00	X	X	X	X						
1.50	X	X								
2.00										
2.50										
3.00										
4.00										
6.00										



0- -1,2,3,4,6,7 as shown

Wire size: 0.5-2.0 mm²

⚠ OBSOLETE	Bright	Brass	925660-7
	Gold over Ni	Phosphor Bronze	925660-6
OBSOLETE	Pre-tin plated	Steel	925660-5
	Bright	Phosphor Bronze	925660-4
	Silver	Phosphor Bronze	925660-3
	Pre-tin plated	Phosphor Bronze	925660-2
	Pre-tin plated	Brass	925660-1
	Finish	Material	Part no.

THIS DRAWING IS A CONTROLLED DOCUMENT.

DIMENSIONS:
mmTOLERANCES UNLESS
OTHERWISE SPECIFIED:

MATERIAL See table

0 PLC	±0.2
1 PLC	±0.2
2 PLC	±0.2
3 PLC	±
4 PLC	±
ANGLES	±° 30'
FINISH	See table

OWN	J. Salo	12NOV2008
CHK	R. Sole	12NOV2008
APVD	P. F. Grassano	12NOV2008
PRODUCT SPEC	108-1032	
APPLICATION SPEC	114-1007	
WEIGHT	-	

TE Connectivity

.140 DIA PIN

SIZE	CAGE CODE	DRAWING NO	RESTRICTED TO
A3	-	925660	-

CUSTOMER DRAWING

SCALE 2:1

SHEET 1 OF 1 REV Y2

1470-19 (3/11)

Pro/ENGINEER DRAWING