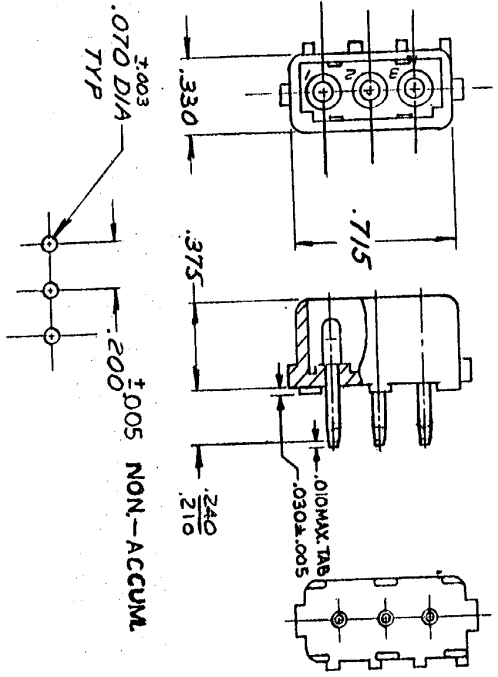


DIMENSIONS IN INCHES. DO NOT SCALE PRINT.



RECOMMENDED LAYOUT FOR
.125 THICK P.C. BOARD

1. PARTS COMPLY WITH AMP SOLDERABILITY
SPEC NO. 109-11-3

REV	REVISION RECORD	DATE
N	ABOLISH 2 PER ENCLM-2109	
M	085.9-1 PER CM-120	

NUMBER	DESCRIPTION
350423	

ASSEMBLY NO.	DESCRIPTION	REQUIREMENTS
350423-1	NYLON - NATURAL	
	HSG. MATL & COLOR FIN MATL & FINISH	
	SEE TABLE	

① 1978 AMP INCORPORATED. ALL RIGHTS RESERVED.
AMP PRODUCTS COVERED BY PATENTS AND/OR PATENTS PENDING.
9-6-78
6-25-78

AMP INCORPORATED
 CUSTOMER COPY
 REFERENCE ONLY
 TOLERANCE GRADIENT SCALE
 3 CIRCUIT MATL-N-LOK
 P.C. BOARD HEADER
 SEE TABLE
 350423
 H