

4

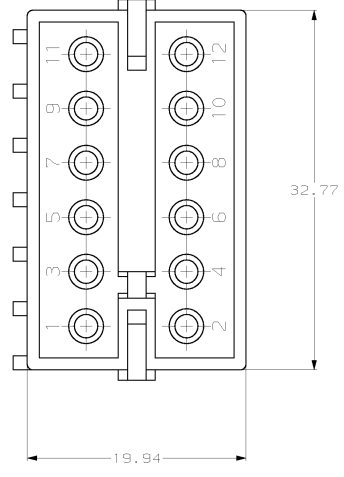
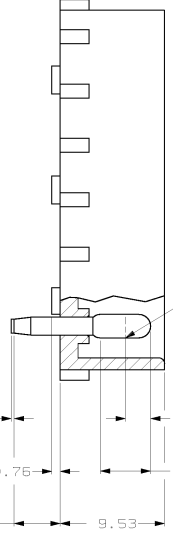
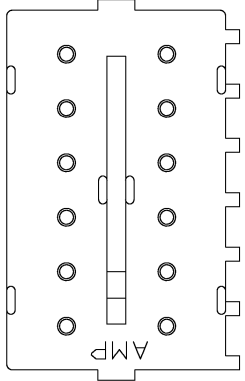
3

2

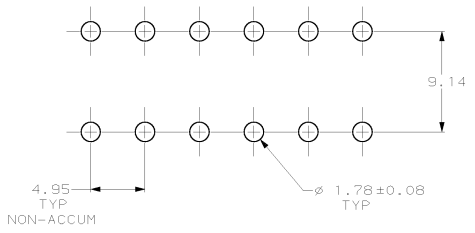
1

THIS DRAWING IS UNPUBLISHED. RELEASED FOR PUBLICATION. (C) COPYRIGHT IS BY AMP INCORPORATED. ALL RIGHTS RESERVED.

| REV. NO. | DATE | DESCRIPTION | BY | CHKD |
|----------|-----------|-----------------------------|----|------|
| CM 53 | | | | |
| R | 10-APR-08 | REVISED PER EC 0638-0151-99 | KW | SR |



- PARTS COMPLY WITH AMP SOLDERABILITY SPEC 109-11-2.
- CONTACT IS PLATED OVERALL WITH 0.00127 NICKEL, THEN 0.00076 GOLD OVER LENGTH INDICATED AND MATTE TIN ON SOLDER TAIL END.



RECOMMENDED MOUNTING HOLE PATTERN FOR .062 THICK P.C. BOARD

| | | | |
|---------|---------|-------|-------|
| 2.29 | .090 | - | - |
| 1.78 | .070 | 32.77 | 1.290 |
| 0.76 | .030 | 19.94 | .785 |
| 0.25 | .010 | 9.53 | .375 |
| 0.13 | .005 | 9.14 | .360 |
| 0.08 | .003 | 4.95 | .195 |
| 0.00127 | .000050 | 4.57 | .180 |
| 0.00076 | .000030 | 3.81 | .150 |
| MM | IN | MM | IN |

CONVERSION TABLE

METRIC

| MATERIAL | FINISH | MATERIAL | HOUSING | COLOR | PART NO |
|----------|---------|----------------|---------|-------|----------|
| CU ALLOY | △ | NYLON, UL94V-0 | NATURAL | | 350213-2 |
| CU ALLOY | PRE-TIN | NYLON, UL94V-0 | NATURAL | | 350213-1 |

THIS DRAWING IS A CONTROLLED DOCUMENT.

AMP Incorporated
Harrisburg, PA 17105-3608

AMP

HEADER ASSEMBLY,
12 CIRCUIT,
COMMERCIAL MATE-N-LOK™

SIZE: CASE CODE: DRAWING NO: **A200779** **C-350213** RESTRICTED TO

CUSTOMER DRAWING SCALE: 4:1 SHEET 1 OF 1 REV R