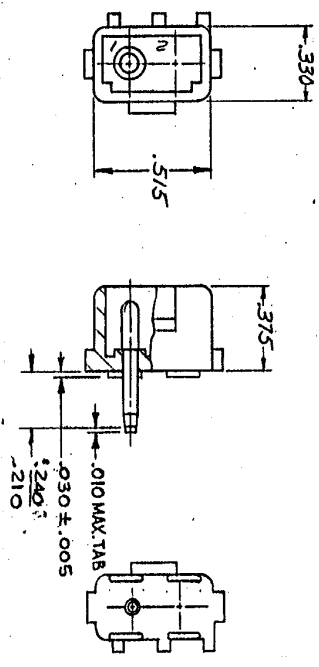


WAS P-73-6101

AMP 1253 REV 11/65



DIMENSIONS IN INCHES. DO NOT SCALE PRINT.



RECOMMENDED LAYOUT FOR  
.125 THICK R.C. BOARD

L	PER ECN CM-2709	48
K	OBsolete H-1, 2, 3, 4	48
	41, 51, 61, 71, 81, 91, 101	48
	12, 22, 32, 42, 52, 62	48
	72, 82, 92 CM 413	48

U	RESTORED	84	85	86
J	REV PER M-7375	57	58	59
H	ADD'D DATE Z, M-6694	55	56	57
G	REMOVED SPACER, M-6593	54	55	56
F	REMOVED SPACER, M-6593	53	54	55
E	REMOVED SPACER, M-6593	52	53	54
D	REMOVED M-4161	51	52	53
C	ECN M-3871	50	51	52
B	ECN M-3452	49	50	51
A	ECN M-3152	48	49	50

NUMBER	350540
REQUIRED PER ASSEMBLY	
DESCRIPTION	

ASSEMBLY NO	350540-1	NYLON - NATURAL	COPPER ALLOY PRE-TIN
HSG MATL & COLOR	HSS MATL & COLOR	PIN MATL: S FINISH	
DATE	9. EL	5-28-73	
CHK	g. El	1/1/73	
DE	Thibbe	4-10-73	
APP	Thibbe	4-10-73	
WIRE GANGE - INDUCTION	SCALE	LOC	NO
2 CIRCUIT MAT-N-LOK	CM	B	350540
R.C. BOARD HEADER			

1. PARTS COMPLY WITH AMP SOLDERABILITY  
SPEC. NO. 109-11-3