

4

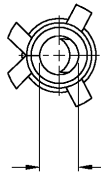
3

2

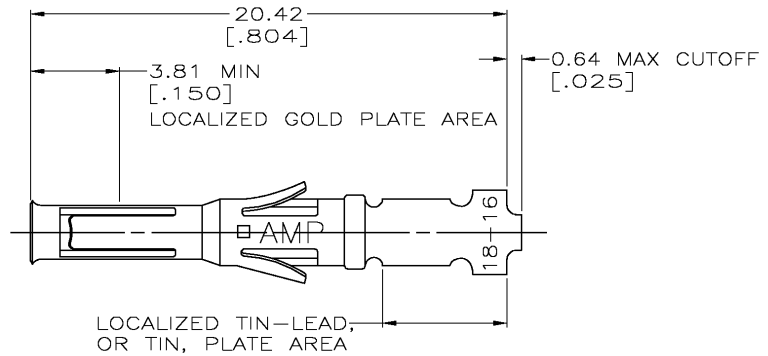
1

THIS DRAWING IS UNPUBLISHED. RELEASED FOR PUBLICATION
 © COPYRIGHT BY TYCO ELECTRONICS CORPORATION. ALL RIGHTS RESERVED.

LOC	DIST	REVISIONS			
P	LTR	DESCRIPTION	DATE	DWN	APVD
BD	39	G	0G3B-0317-03	24APR03	TK GS



ACCOMODATES
1.57 DIA PIN
[.062]



1. WIRE RANGE 18-16 AWG.
2. INSULATION RANGE 2.03-2.54 [.080-.100] DIA.
3. 0.76µm [.000030] MIN GOLD IN LOCALIZED GOLD PLATE AREA, 1.27µm [.000050] MIN TIN-LEAD IN LOCALIZED TIN-LEAD PLATE AREA, BOTH OVER 1.27µm [.000050] MIN NICKEL.
4. TIN PLATED.
5. GOLD PLATING PER MIL-G-45204, TIN PER MIL-T-10727 AND NICKEL PER QQ-N-290.
6. 0.76µm [.000030] MIN GOLD IN LOCALIZED GOLD PLATE AREA, 1.27µm [.000050] MIN TIN IN LOCALIZED TIN PLATE AREA, BOTH OVER 1.27µm [.000050] MIN NICKEL.

STRIP REF	FINISH	PART NO
66580-7	6	66590-4
66580-4	3	66590-2
66580-2	4	66590-1

THIS DRAWING IS A CONTROLLED DOCUMENT.		DWN D.HARDY 06/15/94	Tyco Electronics Corporation Harrisburg, Pa	
DIMENSIONS: INCHES	TOLERANCES UNLESS OTHERWISE SPECIFIED:	CHK R.STONE 06/22/94	NAME G.STEINHAUER	
	0 PLC ± -	APVD G.STEINHAUER 06/27/94	PRODUCT SPEC	
	1 PLC ± -	APPLICATION SPEC	SIZE CAGE CODE DRAWING NO	
	2 PLC ± 0.13 [.005]	WEIGHT	RESTRICTED TO	
	3 PLC ± -		A3 00779 C-66590	
MATERIAL BRS PER MIL-C-50	FINISH 5 SEE TABLE	CUSTOMER DRAWING	SCALE 6:1	SHEET 1 OF 1