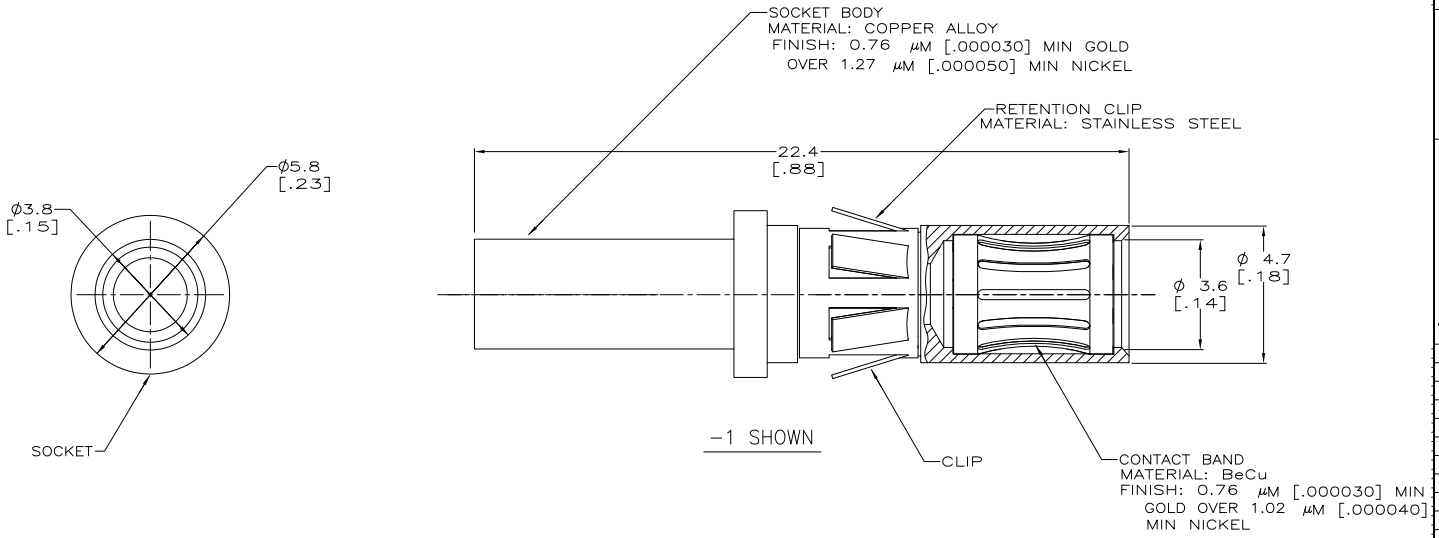


DRAWING MADE IN THIRD ANGLE PROJECTION  
 THIS DRAWING IS UNPUBLISHED. RELEASED FOR PUBLICATION ,19  
 © COPYRIGHT 19 BY AMP INCORPORATED. ALL INTERNATIONAL RIGHTS RESERVED.

REVISIONS								
LOC	DIST	P	F	ZONE	LTR	DESCRIPTION	DATE	APPD
CH	11				D	ECN 95032201	03-22-95	CMS
					D1	REVISED PER ECO-09-024717	09/09/99	AEG

1. RETROFIT CONTACT FOR METRIMATE AND AMPLIMATE POWER CONTACT.
  2. WIRE BARREL WILL ACCEPT #12-14 AWG WIRE.
  3. MATES WITH AMP P/N 193534.
- △ OBSOLETE PARTS: OBSOLETE CIS STREAMLINING PER D.RENAUD/D.SINISI



△ OBSOLETE	WITHOUT RET. CLIP	193535-2
	WITH RET. CLIP	193535-1

DO NOT SCALE PRINT. UNLESS SPECIFIED DIMENSIONS IN mm [INCHES]		DR D. BABOW 06-23-92		AMP AMP Incorporated Harrisburg, PA 17105-3608	
TOLERANCES ON :		CHK S. SIEGRIST 07-07-92		NAME	
2 PLC DEC ± -		APPD D. PETRIE 07-09-92		SKT ASSY, POWER, 12-14 AWG	
3 PLC DEC ± -		APPD P. GLASER 07-09-92		SIZE CAGE CODE DRAWING NO	
ANGLES ± -		PRODUCT SPEC		C 00779 C- 193535	
MATERIAL		APPLICATION SPEC		SCALE 10:1 SHEET 1 OF 1	
FINISH		WEIGHT		CUSTOMER DRAWING	

THIS DRAWING IS A CONTROLLED DOCUMENT FOR AMP INCORPORATED. IT IS SUBJECT TO CHANGE AND THE CONTROLLING ENGINEERING ORGANIZATION SHOULD BE CONTACTED FOR THE LATEST REVISION.

AMP 1471-6 REV 3-92 Transmitted 06/10/31 07:51 06 [VMMOD] [RAMSES] [3:37] Computer/Printer, Inc. Medium Revision: 13.237  
 22 MAR 1995 09:06:11 AMP21803 <US198A>DFPT7309>U.0790>U.CUSTOMER

CUSTOMER DRAWING