

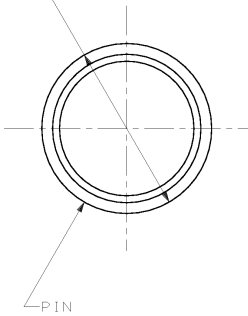
THIS DRAWING IS UNPUBLISHED. RELEASED FOR PUBLICATION .19
 © COPYRIGHT 19 BY AMP INCORPORATED. ALL INTERNATIONAL RIGHTS RESERVED.

LOC	DIST	P	F	ZONE	LTR	REVISIONS	DATE	APPR
CH	111				B	ECN 95030204		

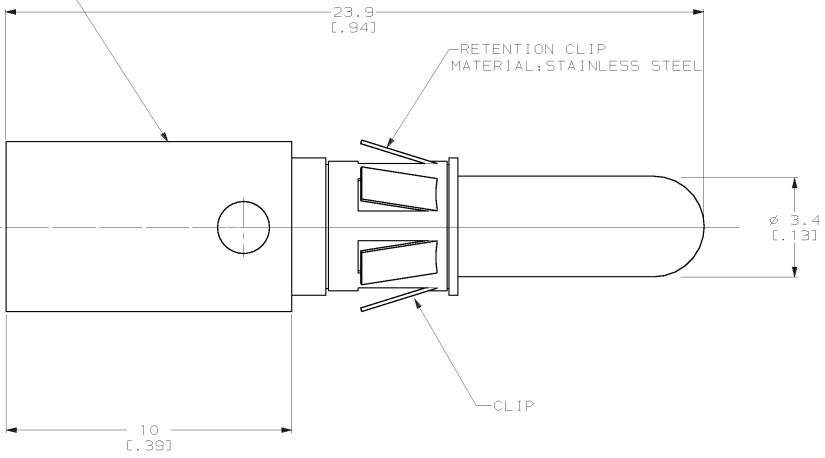
1. RETROFIT CONTACT FOR METRIMATE AND AMPLIMATE POWER CONTACT.
2. WIRE BARREL WILL ACCEPT #8 AWG WIRE.
3. MATES WITH PN 193458-1.

PIN BODY
 MATERIAL: COPPER ALLOY
 FINISH: 0.76µM [.000030] MIN GOLD OVER
 1.27µM [.000050] MIN NICKEL

∅ 5.8
 [.23]



PIN



RETENTION CLIP
 MATERIAL: STAINLESS STEEL

CLIP

193457-1

PART NO

DO NOT SCALE PRINT. UNLESS SPECIFIED DIMENSIONS IN mm (INCHES) TOLERANCES ON :		DR D. WILSON 05-27-92		AMP Incorporated Harrisburg, PA 17105-3608	
2 PLC DEC ± - 3 PLC DEC ± - ANGLES ± -		CHK S. STEGRIST 05-27-92			
MATERIAL		APPD A. GRIFFIN 05-27-92		NAME	
-		APPD P. GLASER 05-27-92		PIN, POWER, #8 AWG	
FINISH		APPLICATION SPEC		SIZE	CAGE CODE
-		-		C	00779
WEIGHT		-		SCALE	DRAWING NO
-		-		10:1	C-193457
				SHEET	1 OF 1

WAS 92-9991-004

THIS DRAWING IS A CONTROLLED DOCUMENT FOR AMP INCORPORATED. IT IS SUBJECT TO CHANGE AND THE CONTROLLING ENGINEERING ORGANIZATION SHOULD BE CONTACTED FOR THE LATEST REVISION.

AMP 1471-B REV 3-92
 02 MAR 1995 13:15:38 AMP21803 <U51984>DEPT7309>U.0790>U.CUSTOMER

CUSTOMER DRAWING