

4

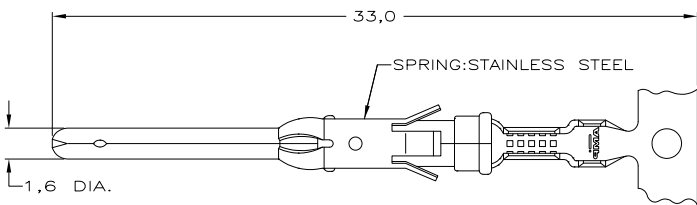
3

2

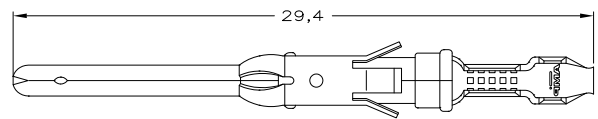
1

THIS DRAWING IS UNPUBLISHED. RELEASED FOR PUBLICATION
 © COPYRIGHT - By - ALL RIGHTS RESERVED.

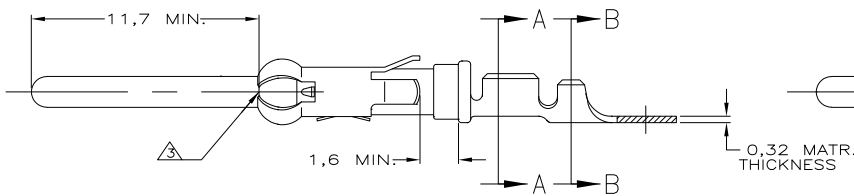
LOC	DIST	REVISIONS			
P	LTR	DESCRIPTION	DATE	DWN	APVD
G2		REVISED PER ECO-11-005150	21MAR11	RK	HMR



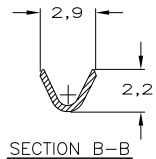
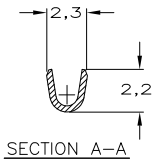
STRIP



LOOSE-PIECE



COLOR CODE: YELLOW



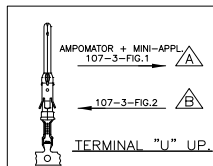
SECTION A-A

SECTION B-B

WIRE RANGE : 0,20-0,50 mm² (24-20 AWG)
 INSUL. RANGE : 1,1 -1,8 mm (.045-.070)

NOTES :

- 1 FOR CRIMPDETAILS SEE AMP-SPEC. 114-19.000 .
- 2 MEETS PRODUCTSPECIFICATION 108-10042.
- △ 0,40 MAX. GAP BETWEEN SPRING-NOSE AND CONTACT BODY.
- △ OBSOLETE PARTS: OBSOLETE CIS STREAMLINING PER D.RENAUD/D.SINISI



PARTNUMBER	DIRECTION OF REEL	LOOSE-PIECE	MATERIAL	PLATING
164160-8	△		PHBR	EL.TIN
164160-7	△		BRASS	ECON.GOLD
164160-6	△	164163-4	BRASS	ECON.GOLD
164160-4	△		BRASS	SEL.GOLD
164160-3	△		BRASS	EL.TIN
164160-2	△	164163-2	BRASS	SEL.GOLD
164160-1	△	164163-1	BRASS	EL.TIN

NOTES	MATERIAL	THICKNESS	AREA
△	TIN	2,0 μm	ALL OVER
△	NICKEL	0,8 μm	ALL OVER
△	GOLD		CONTACT AREA
△	TIN		BARREL
△	NICKEL	0,8 μm	ALL OVER
△	GOLD		CONTACT AREA
△	GOLD		ALL OVER
△	NICKEL	1,2 μm	CONTACT AREA
△	GOLD		ALL OVER
△	NICKEL	2,5 μm	ALL OVER
△	SILVER		CONTACT AREA
△	TIN		BARREL
△	SILVER	0,5 μm	ALL OVER
△	SILVER	2,5 μm	ALL OVER

THIS DRAWING IS A CONTROLLED DOCUMENT.

19.08.1987

DIMENSIONS: mm

TOLERANCES UNLESS OTHERWISE SPECIFIED:

0 PLC	±
1 PLC	±
2 PLC	±
3 PLC	±
4 PLC	±
ANGLES	±

MATERIAL FINISH

DWN L.V.D.HEYDEN	19.08.1987		PIN TYPE III CONTACT SIZE 16 (LONG PIN)	RESTRICTED TO
CHK P.V.D.HAGEN	NAME			
APVD	PRODUCT SPEC			
APPLICATION SPEC	WEIGHT	SIZE A3	CAGE CODE 00779	DRAWING NO C-164160
CUSTOMER DRAWING	SCALE	SHEET 1 of 1	REV G2	