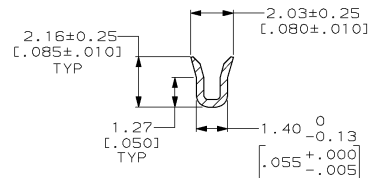
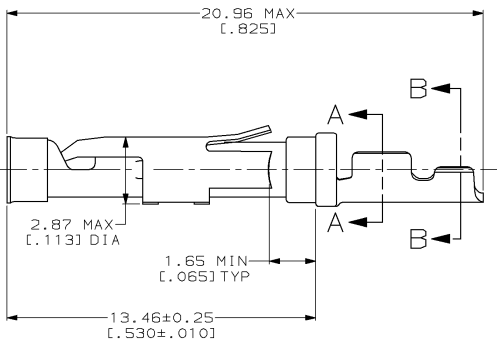
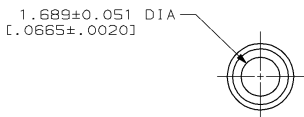
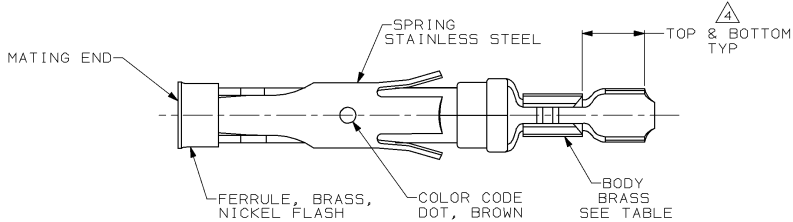
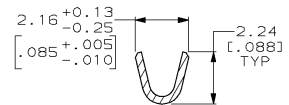


THIS DRAWING IS UNPUBLISHED. RELEASED FOR PUBLICATION  
 © COPYRIGHT 19 BY AMP INCORPORATED. ALL INTERNATIONAL RIGHTS RESERVED.

| LOC | DIST | P | F | ZONE | LTR | REVISIONS                                | DATE      | APPD |
|-----|------|---|---|------|-----|--|-----------|------|
| FT  | 47   |   |   |      |     | G REDRAWN & REV PER ECN B03869           | 7-30-91   | -    |
|     |      |   |   |      |     | H ADDED -5 PER NPR 3597 & REV PER B06295 | 06/04/92  | GS   |
|     |      |   |   |      |     | J OBS -1 PER EC 0020-1318-95             | 11 JUN 96 | GS   |
|     |      |   |   |      |     | K OBSOLETE -5                            | 18 DEC 96 | GS   |
|     |      |   |   |      |     | L REV PER EC 0320-137-97                 | 20 AUG 97 | PB   |



SECTION A-A



SECTION B-B

- ⚠ 0.76µm [.000030] MIN GOLD PER MIL-G-45204 ON MATING END FOR A LENGTH OF 5.08 [.200] MIN WITH GOLD FLASH ON THE REMAINDER OVER 0.76µm [.000030] MIN NICKEL PER QQ-N-290.
- ⚠ 0.76µm [.000030] MIN GOLD PER MIL-G-45204 ON MATING END FOR A LENGTH OF 5.08 [.200] MIN WITH A UNIFORM GRADIENT TO 0.25µm [.000010] MIN GOLD PER MIL-G-45204 ON THE REMAINDER OVER 0.76µm [.000030] MIN NICKEL PER QQ-N-290.
- ⚠ 0.38µm [.000015] MIN GOLD PER MIL-G-45204 ON MATING END FOR A LENGTH OF 5.08 [.200] MIN WITH GOLD FLASH ON THE REMAINDER OVER 0.76µm [.000030] MIN NICKEL PER QQ-N-290.
- ⚠ GOLD PLATING NEED NOT APPEAR IN THIS AREA.
- S. WIRE RANGE 26-30 AWG. INSULATION RANGE 1.02[.040]-1.52[.060].
- ⚠ 0.38µm [.000015] MIN GOLD PER MIL-G-45204 ON MATING END FOR A LENGTH OF 5.08 [.200] MIN, 1.27µm [.000050] MIN TIN-LEAD PER MIL-T-10727 FOR A LENGTH OF 5.69 [.224] MIN ON OPPOSITE END, BOTH OVER 1.27µm [.000050] MIN NICKEL PER QQ-N-290 ON ENTIRE CONTACT.

|          |   |           |         |
|----------|---|-----------|---------|
| OBSOLETE | ⚠ | 1-66424-0 | 66428-5 |
|          | ⚠ | 66424-8   | 66428-4 |
|          | ⚠ | 66424-3   | 66428-3 |
| OBSOLETE | ⚠ | 66424-1   | 66428-1 |

|  |  |                            |   |                     |
|--|--|----------------------------|---|---------------------|
| DO NOT SCALE PRINT. UNLESS SPECIFIED DIMENSIONS IN mm [INCHES] TOLERANCES ON:<br>2 PLC DEC ± 0.13(.005)<br>3 PLC DEC ± -<br>ANGLES ± - |  | DR 7-30-91<br>R. SHIREY    | AMP Incorporated<br>Harrisburg, PA 17105-3608   |                     |
| MATERIAL<br>SEE CALLOUTS   |  | CHK 9-19-91<br>R. STONE    | NAME<br>SOCKET ASSEMBLY, LOOSE PIECE, TYPE III+ |                     |
| FINISH<br>SEE CALLOUTS   |  | APPD 9-20-91<br>J. WESTMAN | SIZE<br>C 00779                                 | DRAWING NO<br>66428 |
| APPLICATION SPEC<br>-  |  | APPD 9-23-91<br>W. PARKER  | SCALE<br>8:1                                    | SHEET<br>1 OF 1     |
| WEIGHT<br>-  |  | CUSTOMER DRAWING           |   |                     |

66428

A