

4

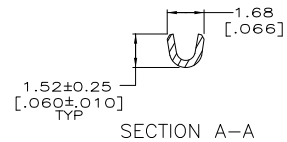
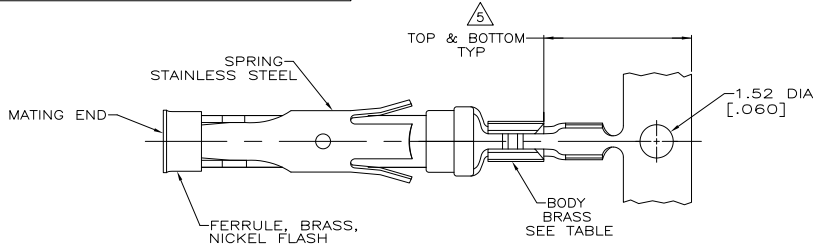
3

2

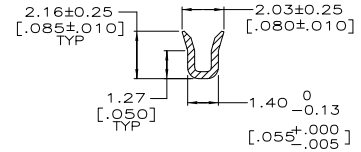
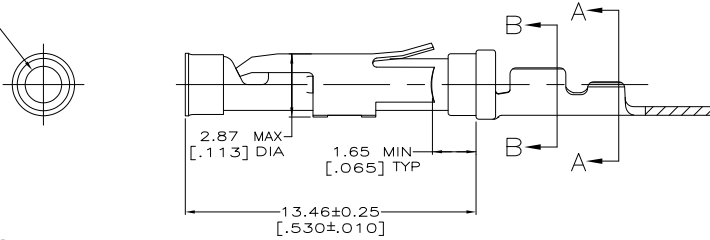
1

THIS DRAWING IS UNPUBLISHED. RELEASED FOR PUBLICATION  
 © COPYRIGHT BY TYCO ELECTRONICS CORPORATION. ALL INTERNATIONAL RIGHTS RESERVED.

LOC	DIST	REVISIONS					
FT	0	P	LR	DESCRIPTION	DATE	MIN	APPD
		V1		REVISED PER ECO-08-018146	28JUL08	HMR	GS
		V2		REVISED PER ECO-09-021826	28AUG09	KK	AEG



1.689±0.051 DIA  
 [.0665±.0020]



- 1 0.76µm [.000030] MIN GOLD PER MIL-G-45204 ON MATING END FOR A LENGTH OF 5.08 [.200] MIN WITH GOLD FLASH ON THE REMAINDER OVER 0.76µm [.000030] MIN NICKEL PER QQ-N-290.
- 2 0.76µm [.000030] MIN GOLD PER MIL-G-45204 ON MATING END FOR A LENGTH OF 5.08 [.200] MIN WITH A UNIFORM GRADIENT TO 0.25µm [.000010] MIN GOLD PER MIL-G-45204 ON THE REMAINDER OVER 0.76µm [.000030] MIN NICKEL PER QQ-N-290.
- 3 0.38µm [.000015] MIN GOLD PER MIL-G-45204 ON MATING END FOR A LENGTH OF 5.08 [.200] MIN WITH GOLD FLASH ON THE REMAINDER OVER 0.76µm [.000030] MIN NICKEL PER QQ-N-290.
- 4 1.27µm [.000050] MIN GOLD PER MIL-G-45204 ON MATING END FOR A LENGTH OF 5.08 [.200] MIN WITH GOLD FLASH ON REMAINDER OVER 1.90µm [.000075] MIN NICKEL PER QQ-N-290.
- 5 GOLD PLATING NEED NOT APPEAR IN THIS AREA EXCEPT 1-66394-2 HAS GOLD PLATING ON INSULATION BARREL.
- 6 REVERSE REELED FOR MINI-APPLICATOR.
- 7 WIRE RANGE 26-30 AWG.  
INSULATION RANGE 0.36[.014]-0.76[.030].
- 8 0.38µm [.000015] MIN GOLD PER MIL-G-45204 ON MATING END FOR A LENGTH OF 5.08 [.200] MIN, 1.27µm [.000050] MIN TIN-LEAD PER MIL-T-10727 FOR A LENGTH OF 5.69 [.224] MIN ON OPPOSITE END, BOTH OVER 1.27µm [.000050] MIN NICKEL PER QQ-N-290 ON ENTIRE CONTACT.
- 9 0.38µm [.000015] MIN GOLD PER MIL-G-45204 ON MATING END FOR A LENGTH OF 5.08 [.200] MIN, 1.27µm [.000050] MIN TIN PER MIL-T-10727 FOR A LENGTH OF 5.69 [.224] MIN ON OPPOSITE END, BOTH OVER 1.27µm [.000050] MIN NICKEL PER QQ-N-290 ON ENTIRE CONTACT.
- 10 OBSOLETE PARTS: OBSOLETE CIS STREAMLINING PER D.RENAUD/D.SINISI
- 11 OBSOLETE

SUPERSEDED BY 66394-7	△	△	-	1-66394-5
SUPERSEDED BY 66394-7	△	△	△ 66405-8	1-66394-4
OBSOLETE	△	△	-	1-66394-2
	△	△	66405-4	66394-8
	△	△	-	66394-7
	△	△	66405-1	66394-5
STANDARD	△	△	66405-4	66394-4
STANDARD	△	△	66405-1	66394-1
REELING			LOOSE PIECE	PART NO.

THIS DRAWING IS A CONTROLLED DOCUMENT. **IN** R. SHIBEY 08/06/91 **OK** S. STONE 9-19-91 **TYCO Electronics** Tyco Electronics Corporation Harrisburg, PA 17105-3608

DIMENSIONS: INCHES. TOLERANCES UNLESS OTHERWISE SPECIFIED.

0 PLC	±	-
1 PLC	±	-
2 PLC	±	0.13 (20%)
3 PLC	±	-
4 PLC	±	-
ANGLES	±	-

MATERIAL: SEE CALLOUTS. FINISH: SEE CALLOUTS.

APPLICATION SPEC: -  
 REELED: -  
 HEIGHT: -

SIZE: A2. CASE CODE: 00779. DRAWING NO: C-66394. RESTRICTED TO: -

CUSTOMER DRAWING. SCALE: 8:1. SHEET: 1 of 1. REV: V2.

1471-9 (1/08)

66394

A