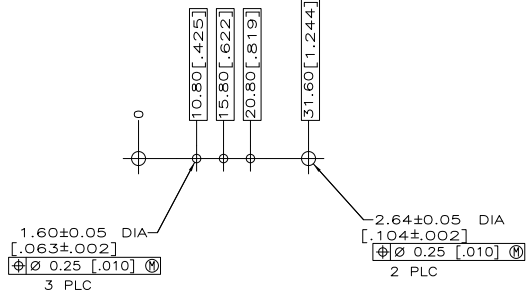
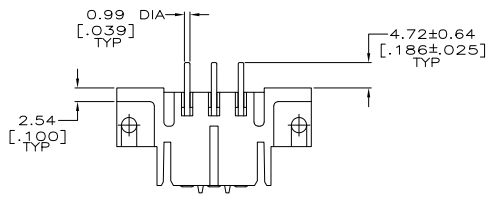
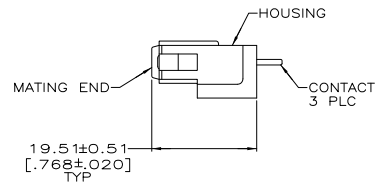
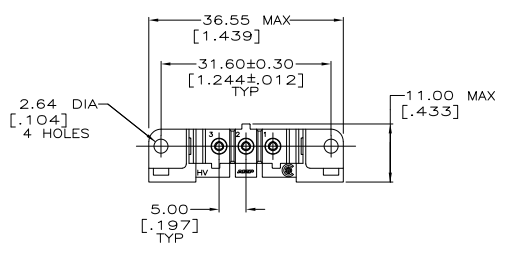


THE DRAWING IS UNPUBLISHED.  
 RELEASED FOR PUBLICATION  
 ALL RIGHTS RESERVED.

REV	DATE	BY	APPD	DESCRIPTION
J2	25MAY11	RK	HMR	REVISED PER ECO-11-010839



RECOMMENDED PC BOARD LAYOUT



- △ NYLON, RED.
- △ PHOSPHOR BRONZE.
- △ 3.81um [.000150] MIN TIN-LEAD OVER 1.27um [.000050] MIN NICKEL.
- △ 0.76um [.000030] MIN GOLD FOR A LENGTH OF 5.08 [.200] MIN FROM MATING END, 3.81um [.000150] MIN TIN-LEAD FOR A LENGTH OF 5.36 [.211] MIN FROM OPPOSITE END, BOTH OVER 1.27um [.000050] MIN NICKEL.
- △ 3.81um [.000150] MIN TIN OVER 1.27um [.000050] MIN NICKEL.
- △ 0.76um [.000030] MIN GOLD FOR A LENGTH OF 5.08 [.200] MIN FROM MATING END, 3.81um [.000150] MIN TIN FOR A LENGTH OF 5.36 [.211] MIN FROM OPPOSITE END, BOTH OVER 1.27um [.000050] MIN NICKEL.

△ 6	207609-7
△ 5	207609-6
△ 4	207609-3
△ 3	207609-1
CONTACT FINISH	PART NO

THIS DRAWING IS A CONTROLLED DOCUMENT. ON L SIDE 06/07/02  
 OR R SIDE 6-25-02  
 DIMENSIONS: TO ENGLISH UNLESS OTHERWISE SPECIFIED: DIM R STONE 6-25-02  
 min [INCHES] DIM A TRAVIS 6-25-02

0 PLC	—	PRODUCT SPEC	—
1 PLC	—	APPLICATION SPEC	—
2 PLC	± 0.25 [.010]	WEIGHT	—
3 PLC	—	CUSTOMER DRAWING	—
4 PLC	—	SCALE	2:1
5 PLC	—	SHEET	1 of 1
6 PLC	—	REV	J2

MATERIAL: HOUSING: 1 CONTACTS: SEE TBL

SIZE: A2 CASE CODE: 00779 DRAWING NO: 207609 RESTRICTED TO: —

TE Connectivity  
 SOCKET HEADER ASSEMBLY, 3 POSN, IN-LINE, METRIMATE