

4

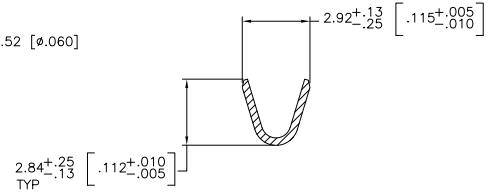
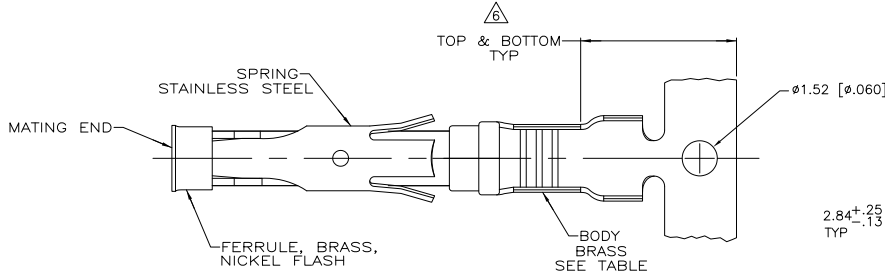
3

2

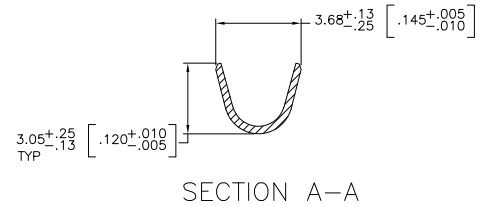
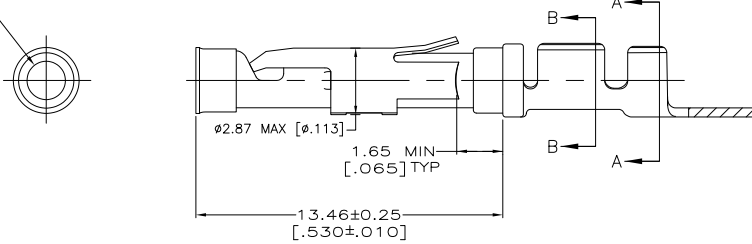
1

THIS DRAWING IS UNPUBLISHED.  
 RELEASED FOR PUBLICATION  
 ALL RIGHTS RESERVED.

LOC	DIST	REVISIONS			
F	LR	DESCRIPTION	DATE	BY	APPD
AK2		REVISED PER ECO-11-004587	11MAR11	RK	HMR



1.689 ± 0.051 DIA  
 [.0665 ± .0020]



- ▲ 0.76µm [.000030] MIN GOLD PER MIL-G-45204 ON MATING END FOR A LENGTH OF 5.08 [.200] MIN WITH GOLD FLASH ON THE REMAINDER OVER 0.76µm [.000030] MIN NICKEL PER QQ-N-290.
- ▲ 1.27µm [.000050] MIN TIN-LEAD PER MIL-T-10727 OVER 0.76µm [.000030] MIN NICKEL PER QQ-N-290.
- ▲ 0.76µm [.000030] MIN GOLD PER MIL-G-45204 ON MATING END FOR A LENGTH OF 5.08 [.200] MIN WITH A UNIFORM GRADIENT TO 0.25µm [.000010] MIN GOLD PER MIL-G-45204 ON THE REMAINDER OVER 0.76µm [.000030] MIN NICKEL PER QQ-N-290.
- ▲ 0.38µm [.000015] MIN GOLD PER MIL-G-45204 ON MATING END FOR A LENGTH OF 5.08 [.200] MIN WITH GOLD FLASH ON THE REMAINDER OVER 0.76µm [.000030] MIN NICKEL PER QQ-N-290.
- ▲ 1.27µm [.000050] MIN GOLD PER MIL-G-45204 ON MATING END FOR A LENGTH OF 5.08 [.200] MIN WITH GOLD FLASH ON REMAINDER OVER 1.90µm [.000075] MIN NICKEL PER QQ-N-290.
- ▲ GOLD PLATING NEED NOT APPEAR IN THIS AREA EXCEPT 1-66100-3 HAS GOLD PLATING ON INSULATION BARREL.
- ▲ REVERSE RELEED FOR MINI-APPLICATOR.
- ▲ WIRE RANGE 18-16 AWG.
- ▲ INSULATION RANGE 2.03 [.080]-2.54 [.100].
- ▲ 0.38µm [.000015] MIN GOLD PER MIL-G-45204 ON MATING END FOR A LENGTH OF 5.08 [.200] MIN, 1.27µm [.000050] MIN TIN-LEAD PER MIL-T-10727 FOR A LENGTH OF 5.69 [.224] MIN ON OPPOSITE END, BOTH OVER 1.27µm [.000050] MIN NICKEL PER QQ-N-290 ON ENTIRE CONTACT.
- ▲ 1.27µm [.000050] MIN TIN PER MIL-T-10727 OVER 0.76µm [.000030] MIN NICKEL PER QQ-N-290.

STANDARD	REELING	SOCKET ASSEMBLY, .062, TYPE III+	LOOSE PIECE REF	PART NO.
▲	▲	1-66101-9		2-66100-0
▲	▲	1-66101-9		1-66100-9
▲	▲	1-66101-4		1-66100-7
OBSELETE	▲			1-66100-3
OBSELETE	▲	66101-4		66100-9
▲	▲	66101-3		66100-8
▲	▲	66101-2		66100-7
▲	▲	66101-1		66100-6
STANDARD	▲	66101-4		66100-4
STANDARD	▲	66101-3		66100-3
STANDARD	▲	66101-2		66100-2
STANDARD	▲	66101-1		66100-1

THIS DRAWING IS A CONTROLLED DOCUMENT.

DRW V. FURLER 11JUL03  
 CHK G. STEINHAUER 11JUL03  
 APPD G. STEINHAUER 11JUL03

TE Connectivity

SOCKET ASSEMBLY, .062, TYPE III+

APPLICATION SPEC: PRODUCT SPEC: WEIGHT: SIZE: CASE CODE: DRAWING NO: RESTRICTED TO: A2 00779 C-66100

CUSTOMER DRAWING SCALE: 8:1 SHEET 1 of 1 REF: AK2