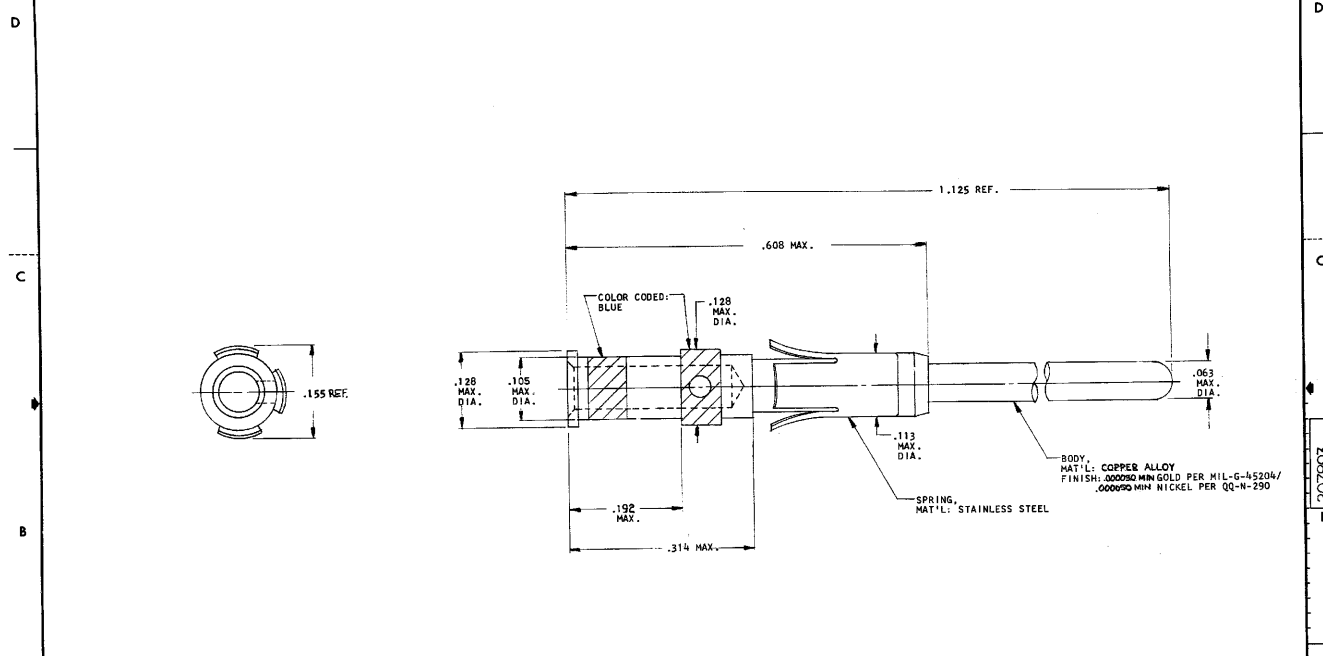


DRAWING MADE IN THIRD ANGLE PROJECTION
 © COPYRIGHT 1978 BY AMP INCORPORATED, HARRISBURG, PA.
 ALL INTERNATIONAL RIGHTS RESERVED. AMP INCORPORATED PRODUCTS
 COVERED BY U. S. AND FOREIGN PATENTS AND/OR PATENTS PENDING.

207893-1 1. AS SHOWN.

REVISIONS		DATE	APPROVED
0	RELEASED	9/6/78	ES/L
A	REVISED ECN 544Z	9/22/78	TH/L
B	REVISED ECN BD2619	5/19/89	TH/L



UNLESS OTHERWISE SPECIFIED DIMENSIONS ARE IN INCHES TOLERANCES ON: DECIMALS ± .01 ANGLES ± 1°		CONTRACT NO.	PART NO.
MATERIAL	DR. <i>David L. Gorman</i> 9/6/78	AMP INCORPORATED Harrisburg, Pa.	ASSEMBLY, CONTACT, PIN #16, TYPE II, GROUNDING PIN FOR CPC (18-16) WIRE SIZE
SEE CALLOUTS	CHK. <i>[Signature]</i> 9/11	NAME	
FINISH	APPR. <i>[Signature]</i> 9/13/78	SIZE CODE IDENT NO	207893
SEE CALLOUTS	DESIGN APPD. <i>[Signature]</i> 9/15/78	SCALE	SHEET 1 OF 1
	OTHER APPD.		

CUSTOMER DRAWING

AMP 1471-6 0-793