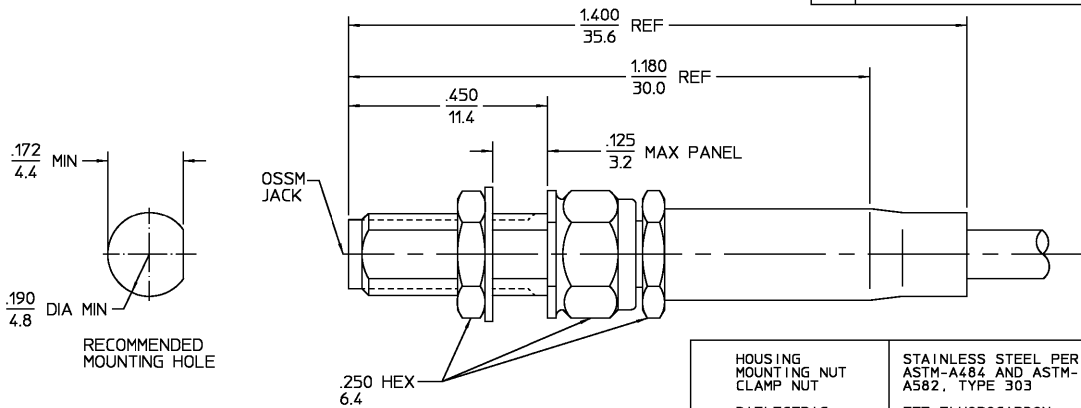


REVISIONS			
REV	DESCRIPTION	DATE	APPROVED
012	REDRAWN ON CAD ECN 94-0561	1/14/95	<i>[Signature]</i>



DESIGNED FOR USE WITH RG174/U,179,187,188.& 316 CABLE ENTRY DIAMETER MINIMUM	
SLEEVE	067
CONTACT	024
DIELECTRIC	066

ELECTRICAL	MECHANICAL	ENVIRONMENTAL
Nominal Impedance (Ohms) 50	Interface Dimensions MIL-STD-348A, Fig. 319-2	Temperature Rating -65°C to +165°C
Frequency Range (GHz) DC to 26	Recommended Mating Torque 5 In. Lbs.	Vibration MIL-STD-202, Method 204, Condition D
Volt Rating (VRMS MAX) Sea Level 250	Mating Characteristics: Insertion (MAX Lbs) 3	Shock MIL-STD-202, Method 213, Condition I
VSWR 107+.015f (f in GHz)	Withdrawal (MIN Oz) 1	Thermal Shock MIL-STD-202, Method 107, Condition B, Except High Temp -85°C
Insertion Loss (dB MAX) .04 √fGHz	Force to Engage and Disengage (In-Lbs MAX) 2.0	Moisture Resistance MIL-STD-202, Method 106
RF Leakage (dB MIN) -60	Center Contact Captivation Axial (Lbs) 6.0	Corrosion - MIL-STD-202, Method 101, Condition B, 5% salt spray
Corona, 70,000 Ft (VRMS MIN) 190	Radial (In-Oz) N/A	
Dielectric Withstanding Voltage (VRMS MIN) Sea Level 750	Cable Retention Axial Force (Lbs) 20	
Contact Resistance (Milliohms MAX) Center Contact 4.0	Torque (In-Oz) N/A	
Outer Contact 2.0	Weight (Grams) 2.4	
Cable to Housing 0.5		
RF High Potential Sea Level (VRMS MIN) 5 MHz 500		
IR (Megohms MIN) 5,000		

COMPONENT	MATERIAL	FINISH
HOUSING MOUNTING NUT CLAMP NUT	STAINLESS STEEL PER ASTM-A484 AND ASTM-A582, TYPE 303	GOLD PLATE PER MIL-G-45204
DIELECTRIC	TFE FLUOROCARBON PER ASTM-D-1457	N/A
CENTER CONTACT	BERYLLIUM COPPER PER ASTM-B-196 OR ASTM-B-197, ALLOY C17300, CONDITION H	GOLD PLATE PER MIL-G-45204
SHRINK TUBING	HEAT SHRINKABLE POLYOLEFIN COMPOUND MIL-I-23053/4	N/A
CRIMP SLEEVE	COPPER OR BRASS ALLOY ROCKWELL F65 MAX	GOLD PLATE PER MIL-G-45204

UNLESS OTHERWISE SPECIFIED DIMENSIONS ARE IN INCHES	DRAWN BY EJC 10/18/77 DATE	AMP Incorporated 140 Fourth Avenue Waltham, MA 02451-7599																
FRAC. DEC. ANGLES = 1/64 * .005 * °	CHECKED BY FRB 10/19/71																	
These drawings and specifications are the property of M/A COM Interconnect Div. and shall not be reproduced or copied or used in whole or in part as the basis for the manufacture or sale of a product without written permission.	APPD BY BWC 10/19/71	<table border="1"> <tr> <th colspan="4">TITLE</th> </tr> <tr> <td colspan="4">OSSM BULKHEAD FEEDTHRU CABLE JACK-CRIMP ATTACHMENT</td> </tr> <tr> <td>SIZE B</td> <td>CODE IDENT NO. 26805</td> <td>1034-7188-00</td> <td>REV 012</td> </tr> <tr> <td colspan="2">SCALE 5/1</td> <td colspan="2">SHEET 1 OF 1</td> </tr> </table>	TITLE				OSSM BULKHEAD FEEDTHRU CABLE JACK-CRIMP ATTACHMENT				SIZE B	CODE IDENT NO. 26805	1034-7188-00	REV 012	SCALE 5/1		SHEET 1 OF 1	
	TITLE																	
	OSSM BULKHEAD FEEDTHRU CABLE JACK-CRIMP ATTACHMENT																	
SIZE B	CODE IDENT NO. 26805	1034-7188-00	REV 012															
SCALE 5/1		SHEET 1 OF 1																
	USE ASSY PROCEDURE 408-04784 (10-018) NO. AP.																	

CUSTOMER DRAWING

AMP PART # 1045502-1
SHEET 1 OF 1 REV A