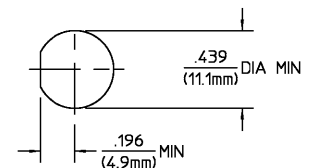


REVISIONS			
REV	DESCRIPTION	DATE	APPROVED
01 ₀	RELEASED	3/6/91	<i>CRJ</i>



RECOMMENDED MOUNTING HOLE (N.T.S.)

COMPONENT	MATERIAL	FINISH
HOUSING MOUNTING NUT LOCKWASHER	STAINLESS STEEL PER ASTM-A484 AND ASTM- A582, TYPE 303	PASSIVATE PER ASTM-A380
DIELECTRIC	TFE FLUOROCARBON PER ASTM-D-1457	N/A
CENTER CONTACT	BERYLLIUM COPPER PER ASTM B 196, ALLOY C17300, CONDITION H	GOLD PLATE PER MIL-G-45204 OVER COPPER PLATE PER MIL-C-14550
'O' - RING	FLOUROCARBON RUBBER PER MIL-R-83248	N/A

UNLESS OTHERWISE SPECIFIED DIMENSIONS ARE IN INCHES TOLERANCE ON		DRAWN BY		DATE		AMP Incorporated	
FRAC	DEC	ANGLES	M.Y.	2-5-91	DATE	3/6/91	140 Fourth Avenue Waltham, MA 02451-7599
± 1/64	± .005	± 1°	BB	3/6/91	APP'D BY	<i>CRJ</i>	
These drawings and specifications are the property of Amp Spectra Incorporated and shall not be reproduced or copied or used in whole or in part as the basis for the manufacture or sale of items without written permission.		USE ASSY PROCEDURE		TITLE		OSM JACK TO OST JACK BULKHEAD FEEDTHRU ADAPTER	
NO. A.P. N/A		SIZE	CODE IDENT NO.	4184-2240-00		REV	01 ₀
		SCALE	4:1		SHEET 1 OF 1		

NOTES:
1. CAPTURED CENTER CONTACT

CUSTOMER DRAWING

AMP PART # 1059172-1
SHEET 1 OF 1 REV A