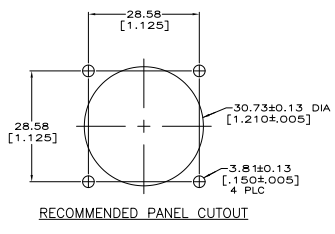
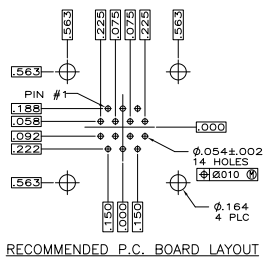
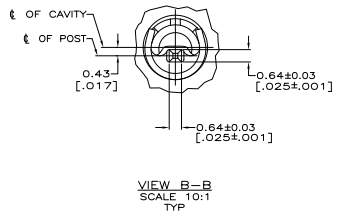
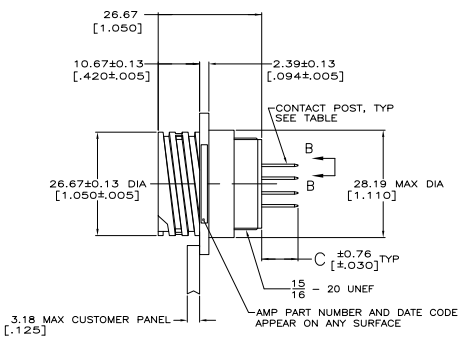
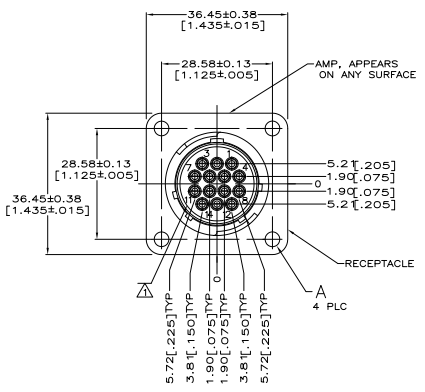


THIS DRAWING IS UNPUBLISHED. ALL RIGHTS RESERVED.
 © 2005 BY TDS ELECTRONICS CORPORATION

REV	DATE	DESCRIPTION	BY	APP
F1	10/26/05	REVISED FOR ECO-05-1234	SS	SH
F2	07/26/10	REVISED FOR ECO-09-011826	KK	AEG



- △ CAVITY IDENTIFICATION CHARACTERS ON FRONT AND REAR FACE.
- △ NYLON, UL 94V-0 RATED, BLACK.
- △ CONTACT BODY: 0.76µm[.000030] MIN GOLD FOR LENGTH OF 5.08[.200] MIN FROM MATING END, WITH REMAINDER TO BE GOLD FLASH, BOTH OVER 1.27µm[.000050] MIN NICKEL.
- △ CONTACT POST: 2.54µm[.000100] MIN TIN-LEAD OVER 2.54µm[.000100] MIN COPPER.
- △ CONTACT BODY: 2.54µm[.000100] MIN TIN-LEAD OVER 1.27µm[.000050] MIN NICKEL.
- △ CONTACT POST: 2.54µm[.000100] MIN TIN-LEAD OVER 2.54µm[.000100] MIN COPPER.
- △ CONTACT BODY: 0.76µm[.000030] MIN GOLD FOR LENGTH OF 5.08[.200] MIN FROM MATING END, WITH REMAINDER TO BE GOLD FLASH, BOTH OVER 1.27µm[.000050] MIN NICKEL.
- △ CONTACT POST: 2.54µm[.000100] MIN TIN OVER 2.54µm[.000100] MIN COPPER.
- △ CONTACT BODY: 2.54µm[.000100] MIN TIN OVER 1.27µm[.000050] MIN NICKEL.
- △ CONTACT POST: 2.54µm[.000100] MIN TIN OVER 2.54µm[.000100] MIN COPPER.
- △ PRELIMINARY PART NUMBER.
- △ OBSOLETE PARTS: OBSOLETE CIS STREAMLINING PER D.RENAUD/D.SINISI

9.35[.368]	3.81±0.08[.150±.003] DIA	△	213729-9
△ OBSOLETE 4.04[.159]	4-40UNC, INSERT, BRASS	△	213729-8
△ OBSOLETE 9.35[.368]	3.81±0.08[.150±.003] DIA	△	213729-7
9.35[.368]	4-40UNC, INSERT, BRASS	△	213729-6
△ 4.04[.159]	4-40UNC, INSERT, BRASS	△	213729-5
△ OBSOLETE 4.04[.159]	4-40UNC, INSERT, BRASS	△	213729-4
△ OBSOLETE 9.35[.368]	3.81±0.08[.150±.003] DIA	△	213729-3
9.35[.368]	4-40UNC, INSERT, BRASS	△	213729-2
9.35[.368]	3.81±0.08[.150±.003] DIA	△	213729-1

THIS DRAWING IS A CONTROLLED DOCUMENT.	DATE	BY	APP	DATE	BY	APP
DESIGNED	12/31/05	SS	SH	10/26/05	SS	SH
ISSUED	12/31/05	SS	SH	10/26/05	SS	SH
REVISIONS	108-10024	114-10004	100779	213729		
REVISIONS	114-10004	100779	213729			
REVISIONS	114-10004	100779	213729			