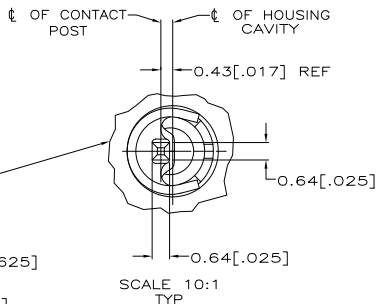
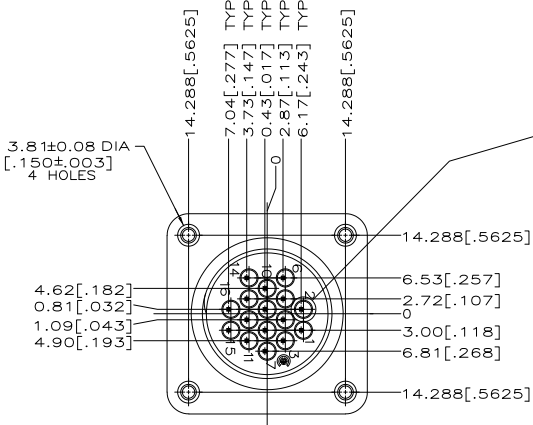
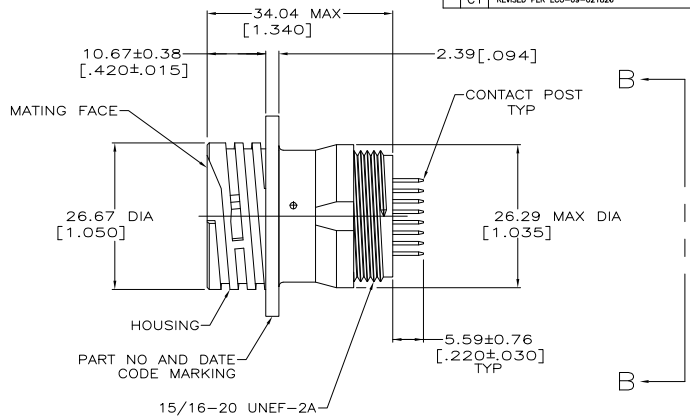
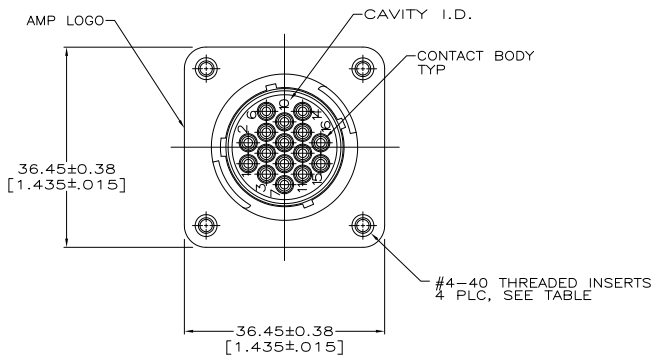


THIS DRAWING IS UNPUBLISHED. RELEASED FOR PUBLICATION.  
 BY TYCO ELECTRONICS CORPORATION. ALL RIGHTS RESERVED.

LOC	DIST	REVISIONS					
FT	0	F	LR	DESCRIPTION	DATE	BY	APPD
		C		REVISED PER ECO-07-006255	3/19/07	SS	SH
		C1		REVISED PER ECO-09-021826	07JAN10	KK	AEG



- ▲ NYLON, UL 94V-0 RATED, BLACK.
- ▲ STAINLESS STEEL.
- ▲ BRASS.
- ▲ CONTACT BODY: 0.76um [.000030] MIN GOLD FOR A LENGTH OF 5.08 [.200] MIN FROM MATING END. GOLD FLASH ON REMAINDER, BOTH OVER 1.27um [.000050] MIN NICKEL. CONTACT POST: 2.54um [.000100] MIN TIN-LEAD OVER 1.27um [.000050] MIN NICKEL.
- 5. RECOMMENDED PC BOARD HOLE SIZE FOR CONTACT POST = 0.89±0.08 [.035±.003] DIA..
- ▲ CONTACT BODY: 0.76um [.000030] MIN GOLD FOR A LENGTH OF 5.08 [.200] MIN FROM MATING END. GOLD FLASH ON REMAINDER, BOTH OVER 1.27um [.000050] MIN NICKEL. CONTACT POST: 2.54um [.000100] MIN TIN OVER 1.27um [.000050] MIN NICKEL.
- ▲ OBSOLETE PARTS: OBSOLETE CIS STREAMLINING PER D.RENAUD/D.SINISI

▲	YES	213855-4
▲	NO	213855-3
▲	YES	213855-2
▲	NO	213855-1
	FINISH	THREADED INSERTS
		PART NUMBER

THIS DRAWING IS A CONTROLLED DOCUMENT.		DRW	01-03-95	Tyco Electronics Corporation Harrisburg, PA 17105-3608
DIMENSIONS:		CHK	01-09-95	
mm [INCHES]		P. STONE		
TOLERANCES UNLESS OTHERWISE SPECIFIED:		NAME		
0 PLC	± .-	PRODUCT SPEC		
1 PLC	± .-	108-10024		
2 PLC	± .025 (.010)	APPLICATION SPEC		
3 PLC	± .-	114-10038		
4 PLC	± .-	SIZE		
ANGLES	± .-	CAGE CODE DRAWING NO		
MATERIAL		A2 00779 C=213855		
HOUSING	▲	RESTRICTED TO		
CONTACT SPRING	▲	CUSTOMER DRAWING		
CONTACT BODY & POST	▲	SCALE 2:1 SHEET 1 of 2 REV C1		

AMP 1471-9 REV 31MM2000

213855

A

4

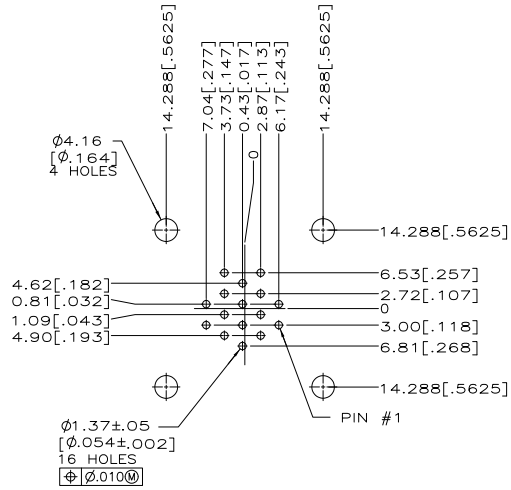
3

2

1

THIS DRAWING IS UNPUBLISHED. RELEASED FOR PUBLICATION  
 BY TYCO ELECTRONICS CORPORATION. ALL RIGHTS RESERVED.

LOC	DIST	REVISIONS				
FT	0	F	LN	DATE	BY	APPD
-	-	SEE SHEET 1	-	-	-	-



RECOMMENDED P.C. BOARD LAYOUT

THIS DRAWING IS A CONTROLLED DOCUMENT.		DRN D. HARDY 01-03-95	Tyco Electronics Corporation Harrisburg, PA 17105-3608	
DIMENSIONS: mm [INCHES]		CHK R. STONE 01-09-95	RECEPTACLE ASSEMBLY, POSTED, STANDARD SEX, 17-16, CPC	
TOLERANCES UNLESS OTHERWISE SPECIFIED:		APPC -	NAME	
0 PLG	±	PRODUCT SPEC	-	
1 PLG	±	108-10024	-	
2 PLG	±	APPLICATION SPEC	-	
3 PLG	± 0.25 (.010)	114-10038	-	
4 PLG	±	HEIGHT	-	
ANGLES	±		-	
MATERIAL FINISH		SIZE	CAGE CODE	DRAWING NO.
MATERIAL: HOUSING Δ		A2	00779	C=213855
CONTACT SPRING Δ		CUSTOMER DRAWING		
CONTACT BODY & POST Δ		SCALE	SHEET	REV
		2:1	2 of 2	C1

AMP 1471-9 REV 31MMR2000

213855