

4

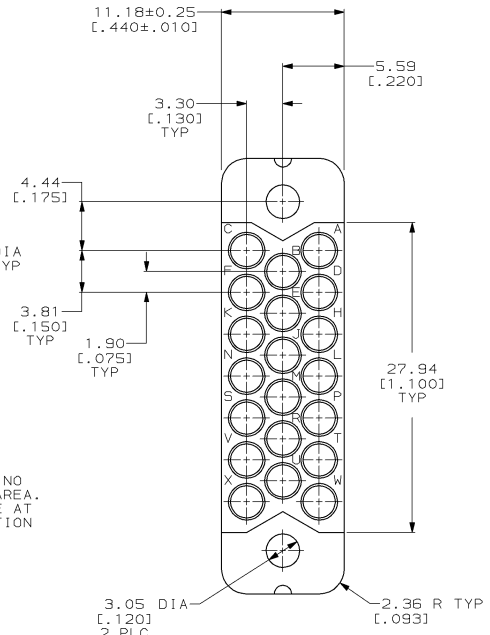
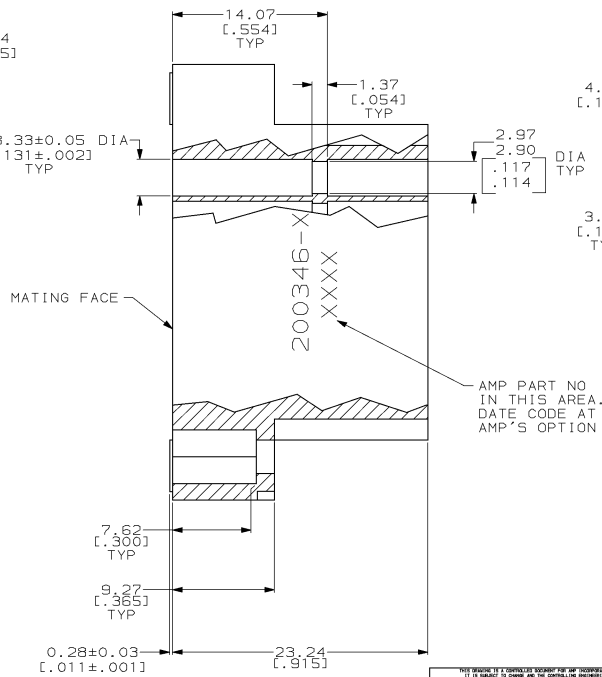
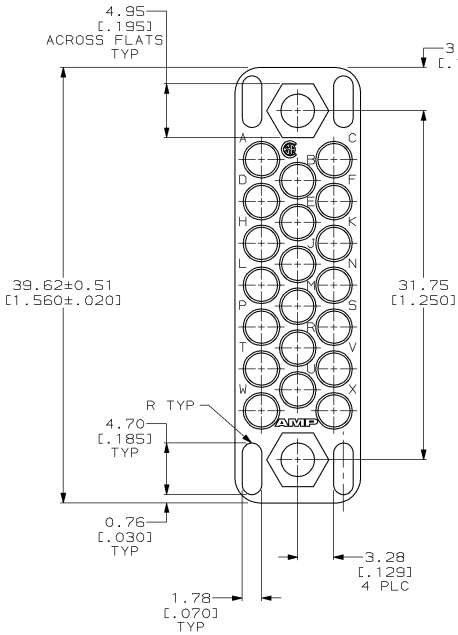
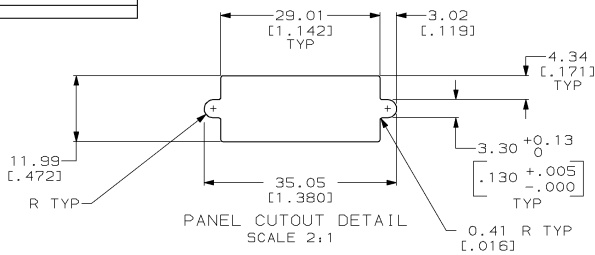
3

2

1

THIS DRAWING IS UNPUBLISHED.
 RELEASED FOR PUBLICATION
 BY AMP INCORPORATED. ALL RIGHTS RESERVED.

LOC	DIST	REVISIONS					
FT	8	REV	PER	EC	DATE	BY	APP'D
		V	REDRAWN W/O CHANGE PER EC 0020-1300-96		06 DEC 96		
		W	REV PER EC 0320-82-97		13 AUG 97	BC	GS



- △ PHENOLIC PER MIL-M-14, TYPE CF6, BLACK.
- △ DIALLYL PHTHALATE PER MIL-M-14, TYPE SDG-F, BLUE.
- 3. WHEN MATING WITH BLOCK 201356, ACCOMODATES TYPE II, TYPE III+ OR TYPE VI #16 PIN OR SOCKET CONTACTS.

MATERIAL	200346-4
	200346-2
PART NUMBER	

DIMENSIONS: mm (INCHES) 0 PLC ±.01 1 PLC ±.015 2 PLC ±.02 3 PLC ±.025 4 PLC ±.03 ANGLES ±.5°		DIMENSIONS SPECIFIED 0 PLC ±.01 1 PLC ±.015 2 PLC ±.02 3 PLC ±.025 4 PLC ±.03 ANGLES ±.5°	DIMENSIONS TYPICAL 0 PLC ±.01 1 PLC ±.015 2 PLC ±.02 3 PLC ±.025 4 PLC ±.03 ANGLES ±.5°	DIMENSIONS UNLESS OTHERWISE SPECIFIED 0 PLC ±.01 1 PLC ±.015 2 PLC ±.02 3 PLC ±.025 4 PLC ±.03 ANGLES ±.5°
MATERIAL: SEE TABLE		FINISH: -		
CUSTOMER DRAWING		SCALE: 4:1		

AMP Incorporated
 Harrisburg, PA 17105-3608

AMP BLOCK, FEMALE, 20 PLACE
 MINIATURE RECTANGULAR,
 M SERIES

SIZE: A2 CASE CODE: 00779 DRAWING NO: 200346
 SHEET 1 OF 1 REV W