

4

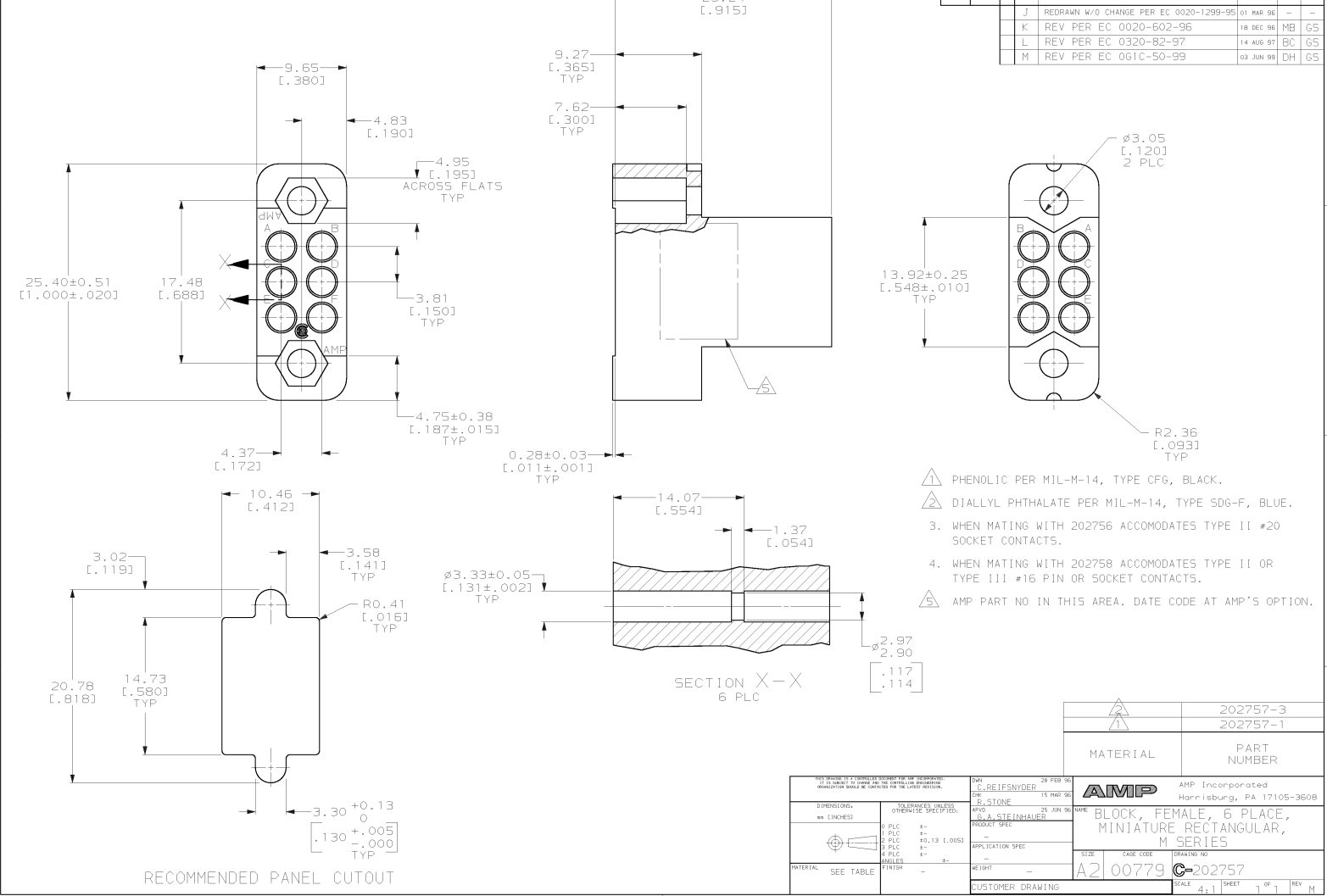
3

2

1

THIS DRAWING IS UNPUBLISHED. RELEASED FOR PUBLICATION
 (C) COPYRIGHT IS BY AMP INCORPORATED. ALL RIGHTS RESERVED.

REV	DATE	BY	APP'D
J	01 MAR 98	—	—
K	18 DEC 98	MB	GS
L	14 AUG 97	BC	GS
M	03 JUN 99	DH	GS



- 1 PHENOLIC PER MIL-M-14, TYPE CFG, BLACK.
- 2 DIALYL PHTHALATE PER MIL-M-14, TYPE SDG-F, BLUE.
- 3. WHEN MATING WITH 202756 ACCOMMODATES TYPE II #20 SOCKET CONTACTS.
- 4. WHEN MATING WITH 202758 ACCOMMODATES TYPE II OR TYPE III #16 PIN OR SOCKET CONTACTS.
- 5 AMP PART NO IN THIS AREA. DATE CODE AT AMP'S OPTION.

202757-3	
202757-1	
MATERIAL	PART NUMBER
AMP AMP Incorporated Harrisburg, PA 17105-3608	
BLOCK, FEMALE, 6 PLACE, MINIATURE RECTANGULAR, M SERIES	
SIZE	DATE CODE
A2	00779
C=202757	
CUSTOMER DRAWING	SCALE 4:1 SHEET 1 OF 1 REV M

DIMENSIONS		DIMENSIONS UNLESS OTHERWISE SPECIFIED	
mm (INCHES)			
0 PLC	±.05	0.13 (1.005)	±.05
1 PLC	±.05		
2 PLC	±.05		
3 PLC	±.05		
4 PLC	±.05		
ANGLES	±.05		
FINISH			