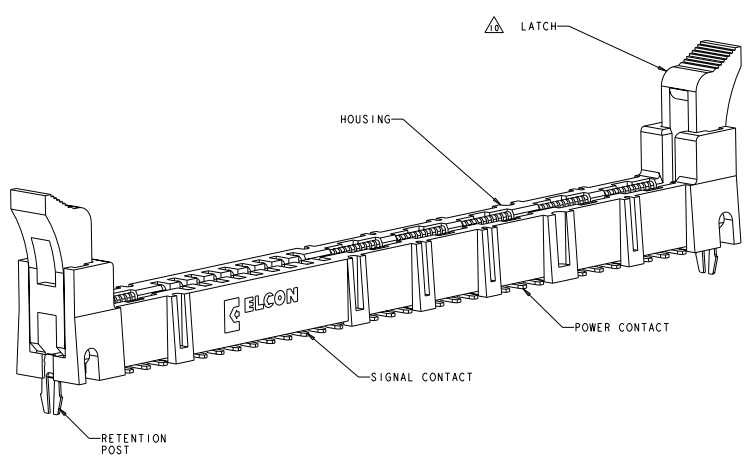


REV	DATE	DESCRIPTION	BY	CHK	APP
C	REV PER ECO-08-031583				



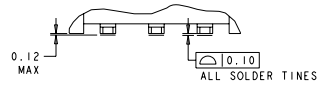
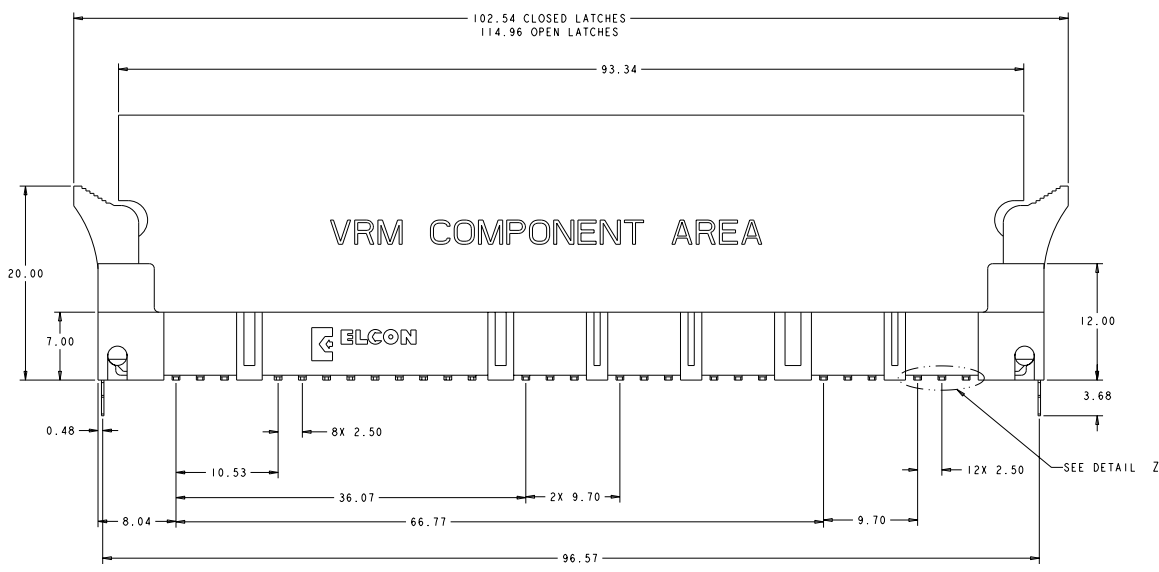
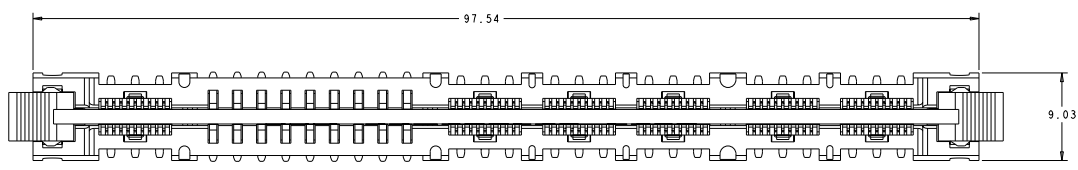
- PART NUMBER CHANGES AND OR DESIGN CHANGES AFFECTING ITEM INTERCHANGEABILITY REQUIRE PRIOR TYCO ELECTRONICS APPROVAL AND AUTHORIZATION BY REVISION TO THIS DRAWING.
- MATERIAL:
    - HOUSING: GLASS FILLED POLYESTER, COLOR-BLACK UL94V-0 FLAMMABILITY RATED
    - LATCHES: THERMOPLASTIC, GLASS REINFORCED COLOR: BLACK, UL94V-0 FLAMMABILITY RATED
    - CONTACTS: COPPER ALLOY
    - RETENTION POST: COPPER ALLOY
  - FINISH:
    - SIGNAL CONTACTS:
      - MATING AREA-0.76µm MIN GOLD OVER 3.81µm MIN NICKEL
      - 0.64µm MIN NICKEL PLATE OVER REMAINDER
      - SMT TAILS-3.81µm MIN MATTE TIN OVER NICKEL PLATE
    - POWER CONTACTS:
      - 1.27µm MIN NICKEL PLATE ALL OVER
      - MATING AREA-0.76µm MIN GOLD OVER NICKEL PLATE
      - SMT TAILS-3.05µm MIN TIN OVER NICKEL PLATE
    - RETENTION POSTS:
      - 3.05µm MIN MATTE TIN OVER 0.63µm MIN NICKEL
- ITEMS PROVIDED TO THIS SPECIFICATION TO BE PERMANENTLY IDENTIFIED WITH PART NUMBER AND DATE CODE.
  - MAXIMUM BURR OF 0.013 ON CARD TAB AREA.
  - SET TRACE BACK FROM PC BOARD EDGE. NO SOLDERMASK ALLOWED BETWEEN PC BOARD EDGE AND TRACE.
  - CONNECTOR ACCEPTS 1.57±0.13 THICK PC BOARD.
  - KEEP OUT AREA FOR COMPONENTS ONLY.
  - FEATURE REQUIRED FOR USE WITH LATCH.
  - CAUTION:
    - LATCHES ARE INTENDED FOR RETENTION OF PC BOARD TO CONNECTOR. DO NOT ATTEMPT TO FULLY EJECT PC BOARD FROM CONNECTOR WHILE DISENGAGING LATCHES, DAMAGE TO LATCHES AND OR CONNECTOR MAY OCCUR.
  - RECOMMENDED GOLD FINGER LENGTH FOR RELIABLE CONTACT.
  - DATUMS AND BASIC DIMENSIONS ESTABLISHED BY CUSTOMER.
- FOR DESIGN OBJECTIVES SEE 108-2301.

AS SHOWN	1766336-1
DESCRIPTION	PART NO.

DATE: 08/27/2016 TIME: 11:25:05 USER: jhanna PROJECT: 1766336-1		Tyco Electronics Harrisburg, PA 17105-3600	
DRAWING NO: 1766336-1 REV: 00 DATE: 08/27/2016 TIME: 11:25:05 USER: jhanna PROJECT: 1766336-1	DRAWING NO: 1766336-1 REV: 00 DATE: 08/27/2016 TIME: 11:25:05 USER: jhanna PROJECT: 1766336-1	SOCKET CONNECTOR ASSEMBLY WITH LATCHES MC-P659 MINI CROWN EDGE	
MATERIAL:  COPPER ALLOY FINISH:  NICKEL OVER GOLD		STATE: CA COUNTRY: US PART NO: 1766336-1 REV: 00	DRAWING NO: 1766336-1 REV: 00 DATE: 08/27/2016 TIME: 11:25:05 USER: jhanna PROJECT: 1766336-1

DATE SHOWN IN DIMENSIONS: REVISIONS FOR FABRICATION  
 BY THIS ELECTRONICS COMPANY. ALL RIGHTS RESERVED.

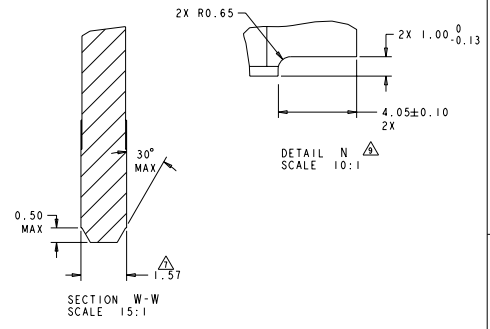
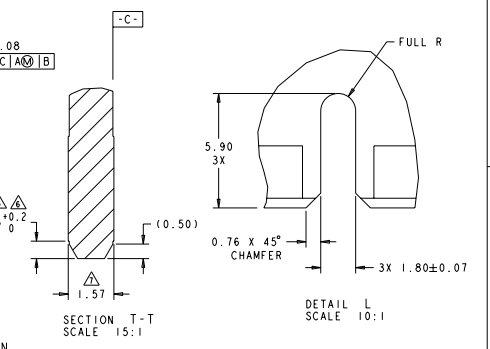
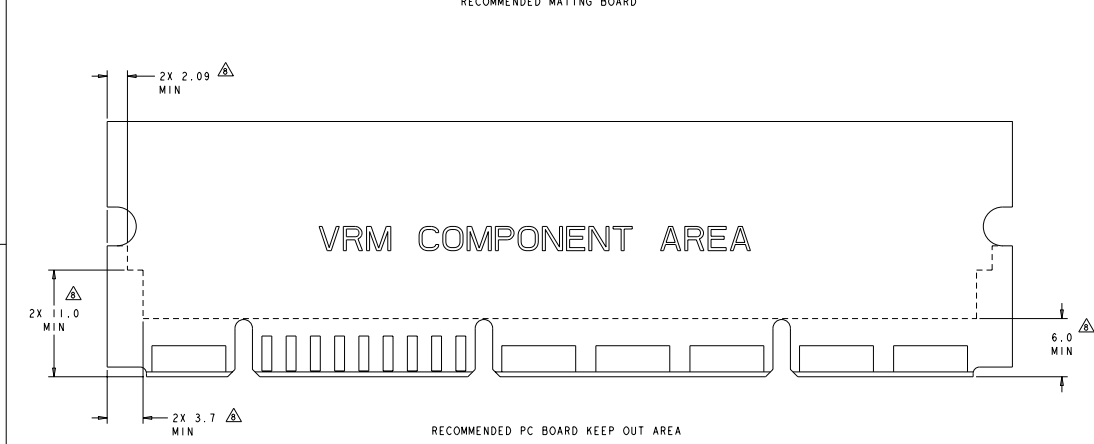
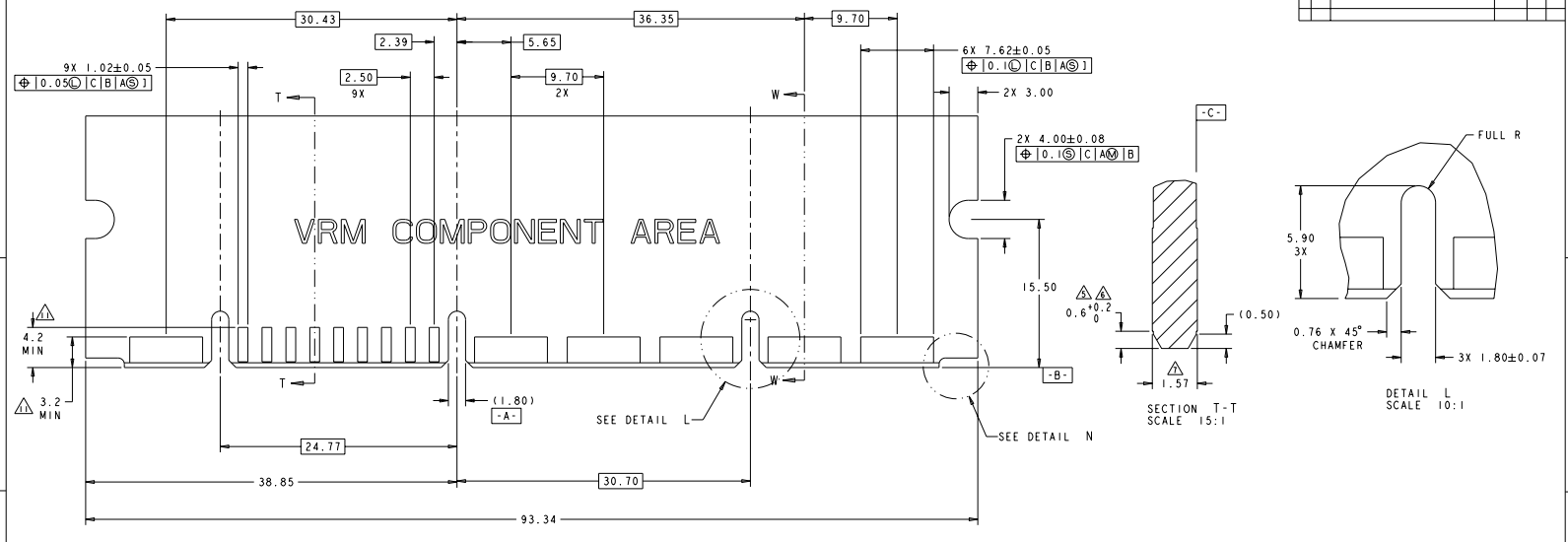
REV	DATE	DESCRIPTION	BY	CHK	APP
GP	00	SEE SHEET 1			



DETAIL Z  
SCALE 10:1

DATE: 08/27/2007 TIME: 10:00 AM DRAWN BY: J. J. J.		PART NO: 1166336 REV: A QUANTITY: 10000		PROJECT: 00779	
CUSTOMER:		CUSTOMER DRAWING:		TITLE: SOCKET CONNECTOR ASSEMBLY WITH LATCHES MC-P659 MINI CROWN EDGE	
SCALE: 10:1		SHEET: 2 OF 2		DRAWN BY: J. J. J.	

REV	DATE	DESCRIPTION	BY	CHK
00		SEE SHEET 1		



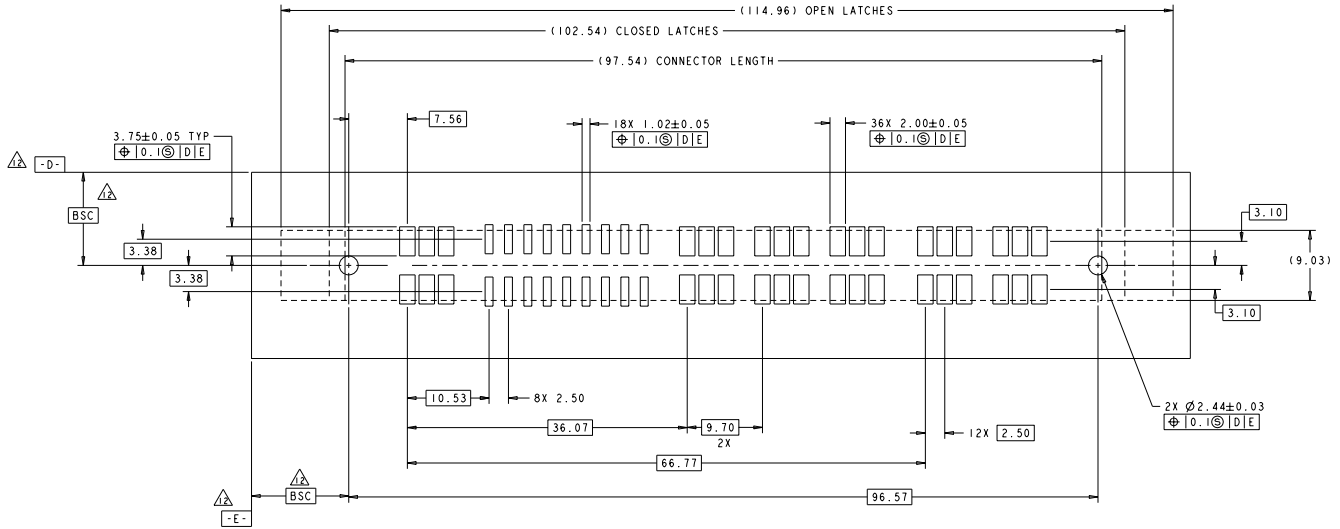
REV	DATE	DESCRIPTION	BY	CHK
00		SEE SHEET 1		

DATE	SCALE	DATE	SCALE	DATE	SCALE
00779	1:1	00779	1:1	00779	1:1

DATE	SCALE	DATE	SCALE	DATE	SCALE
00779	1:1	00779	1:1	00779	1:1

ALL DIMENSIONS TO UNLESS OTHERWISE SPECIFIED  
 REVISIONS FOR FABRICATION  
 BY THIS ELECTRONICS COMPANY, ALL RIGHTS RESERVED

REV		REVISIONS		
NO	DATE	DESCRIPTION	BY	CHK
GP	00	SEE SHEET 1		



RECOMMENDED SOLDER LAND GUIDELINE  
 AS VIEWED FROM CONNECTOR SIDE

DATE 08/23/01 BY [signature]		DATE 01/25/05 BY [signature]		DATE 07/27/09 BY [signature]	
SHEET NO. 1			SHEET TOTAL 4		
PROJECT NAME			PROJECT NO.		
CUSTOMER DRAWING			CUSTOMER PART NO.		
CUSTOMER DRAWING			CUSTOMER PART NO.		

8 7 6 5 4 3 2 1