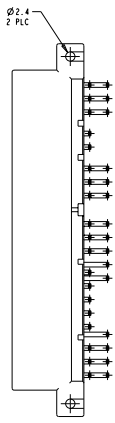
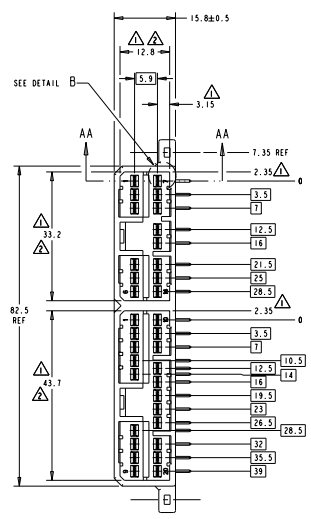
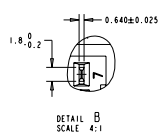
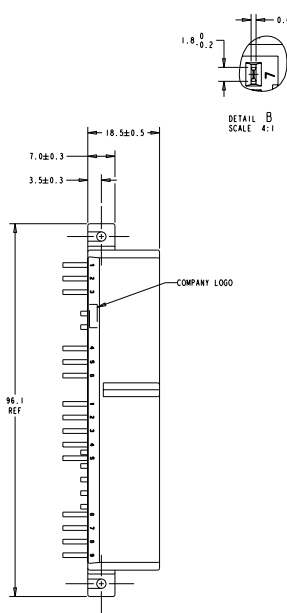
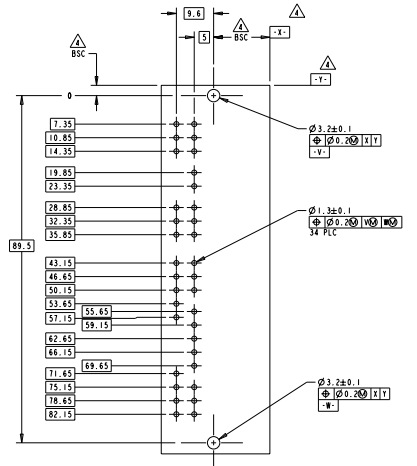
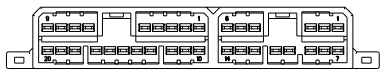


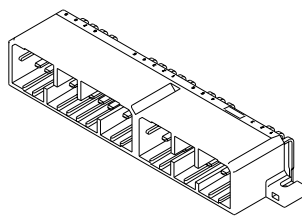
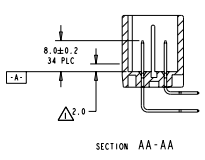
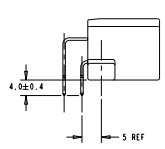
REV	DESCRIPTION	DATE	BY	CHKD
C	REV PER EC 0880-0313-02		SHECHNO	SSA
C1	REV PER EC 0880-0139-03		THORNDY	SSA
C2	REV PER ECR-10-0085H		DUMPHRY	SSA



- △ DIMENSION MUST BE HELD BETWEEN [A] AND 2.0mm FROM [A].
- △ TO MATE WITH PLUG HOUSING SMOOTHLY.
- 3. USE M3x6 TAPPING SCREW JIS B1115 OR 1122 (TYPE 2 OR 4) BEFORE SOLDER. RECOMMENDED TORQUE: 0.39NM MAX.
- △ DATUMS AND BASIC DIMENSIONS ESTABLISHED BY CUSTOMER.
- 5. MATING PLUG PART NUMBERS ARE:
13852 (14 POSITION)
13852 (20 POSITION)
- 6. CIRCUIT NUMBERS:



P.C. BOARD LAYOUT
RECOMMENDED BOARD THICKNESS 1.60±0.15mm
TOLERANCES: ±0.1



MATERIAL		FINISH		PBT		WHITE		9-1438309-1	
BRASS		POST-TIN		CONTRACT		HOUSING		PART NO	
MATERIAL		FINISH		MATERIAL		COLOR		PART NO	
DATE: 08/24/22 DRAWN BY: [redacted] CHECKED BY: [redacted] APPROVED BY: [redacted] TITLE: 34 POSITION CAP HOUSING ASSEMBLY, .070 SERIES, HORIZONTAL, MULTILOCK I/O CONNECTOR PART NO: 9-1438309-1 REV: A SHEET: 2 OF 2 SCALE: 2:1									