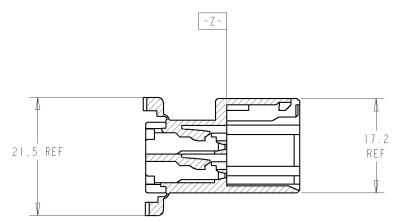
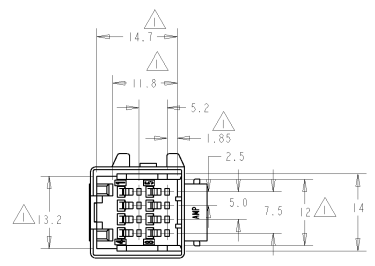
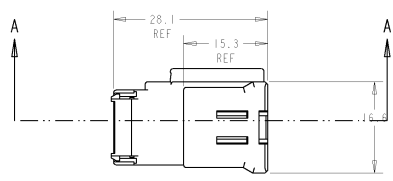
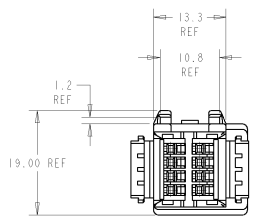
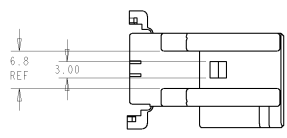
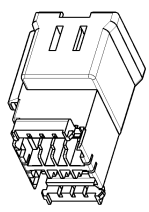


△ TO BE MEASURED BETWEEN  $-Z-$  AND 2mm FROM  $-Z-$ .

2. THE MATING PLUG HOUSING PART NUMBER IS 353490.

3. APPLICABLE CONTACT PART NUMBER IS 173682

REV	DATE	BY	CHKD	DESCRIPTION
A	2002P98	JRB	MAN	REV PER EC 0800-0108-99
B	1106W99	JRB	GEM	REV PER EC 0800-0159-99
-	-	-	-	-
-	-	-	-	-



SECTION A-A

WHITE	638225-1
COLOR	PART NO

<small>THIS DRAWING IS UNPUBLISHED. RELEASED FOR PUBLICATION BY AMP INCORPORATED. ALL RIGHTS RESERVED.</small>		SALES: PETERSON DZSEF98 CH: S. KROEGER DZSEF98 APPRO: S. KROEGER DZSEF98	<b>AMP</b> AMP Incorporated Harrisburg, PA 17105-3400
DIMENSIONS: mm	FINISH: 0 PLC RD.25 1 PLC RD.15 2 PLC RD.11 3 PLC RD.11 4 PLC RD.11 5 PLC RD.11 6 PLC RD.11 7 PLC RD.11 8 PLC RD.11 9 PLC RD.11 10 PLC RD.11 11 PLC RD.11 12 PLC RD.11 13 PLC RD.11 14 PLC RD.11 15 PLC RD.11 16 PLC RD.11 17 PLC RD.11 18 PLC RD.11 19 PLC RD.11 20 PLC RD.11 21 PLC RD.11 22 PLC RD.11 23 PLC RD.11 24 PLC RD.11 25 PLC RD.11 26 PLC RD.11 27 PLC RD.11 28 PLC RD.11 29 PLC RD.11 30 PLC RD.11 31 PLC RD.11 32 PLC RD.11 33 PLC RD.11 34 PLC RD.11 35 PLC RD.11 36 PLC RD.11 37 PLC RD.11 38 PLC RD.11 39 PLC RD.11 40 PLC RD.11 41 PLC RD.11 42 PLC RD.11 43 PLC RD.11 44 PLC RD.11 45 PLC RD.11 46 PLC RD.11 47 PLC RD.11 48 PLC RD.11 49 PLC RD.11 50 PLC RD.11 51 PLC RD.11 52 PLC RD.11 53 PLC RD.11 54 PLC RD.11 55 PLC RD.11 56 PLC RD.11 57 PLC RD.11 58 PLC RD.11 59 PLC RD.11 60 PLC RD.11 61 PLC RD.11 62 PLC RD.11 63 PLC RD.11 64 PLC RD.11 65 PLC RD.11 66 PLC RD.11 67 PLC RD.11 68 PLC RD.11 69 PLC RD.11 70 PLC RD.11 71 PLC RD.11 72 PLC RD.11 73 PLC RD.11 74 PLC RD.11 75 PLC RD.11 76 PLC RD.11 77 PLC RD.11 78 PLC RD.11 79 PLC RD.11 80 PLC RD.11 81 PLC RD.11 82 PLC RD.11 83 PLC RD.11 84 PLC RD.11 85 PLC RD.11 86 PLC RD.11 87 PLC RD.11 88 PLC RD.11 89 PLC RD.11 90 PLC RD.11 91 PLC RD.11 92 PLC RD.11 93 PLC RD.11 94 PLC RD.11 95 PLC RD.11 96 PLC RD.11 97 PLC RD.11 98 PLC RD.11 99 PLC RD.11 100 PLC RD.11	PRODUCT SPEC: .108-5352 APPLICATION SPEC: 114-5108	CAP HOUSING, .040 8 POS. MULTI-LOCK CONNECTOR W/PANEL CLIP
MATERIAL: -	FINISH: -	WEIGHT: -	SIZE: A2 CASE CODE: 100779 DRAWING NO: 638225
CUSTOMER DRAWING		SCALE: 2:1	RESTRICTED TO: -