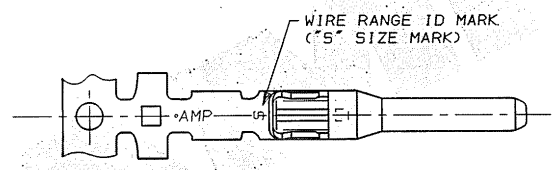
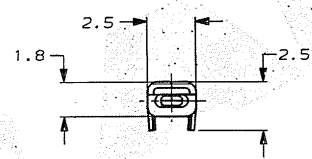
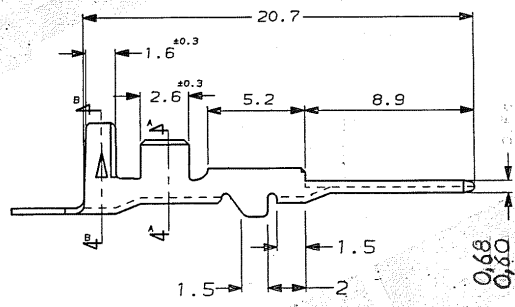
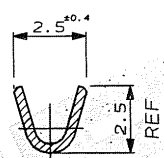
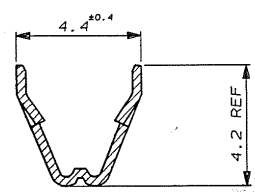
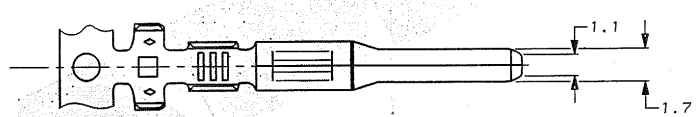


C.A.D. FILE CODE
S. C345210.B

8 7 6 5 4 3 2 1
DO NOT SCALE DIMENSIONS IN MM.



NOTES:-
1 WIRE DETAILS : 0.3-0.5mm² , 1.2-2.0 INS. DIA.
2 SIMILAR TO PART NUMBER 173633.

PRE-TIN		BRASS		345210-1	
FINISH		MATERIAL		PART NUMBER	
CUSTOMER DWG FOR REFERENCE ONLY		©COPYRIGHT 1991 BY AMP OF GREAT BRITAIN LTD. ALL INTERNATIONAL RIGHTS RESERVED. ALL PRODUCTS MAY BE COVERED BY BRITISH AND FOREIGN PATENTS AND/OR PATENTS PENDING.		RELEASED FOR PUBLICATION 16 OCT 1991	
-		TOLERANCES UNLESS OTHERWISE STATED :		DR. D.R. TERRY 16 OCT 1991	
-		DEC ± 0.5		CH. H MISTRY APP. H MISTRY	
-		ANGLES ± 1°		AMP of Great Britain Ltd. TERMINAL HOUSE STANMORE MIDDX.	
B EB00-0191-02		- 1-7-02		NAME	
A SEE EB00-0191-03		18-6-93		.070 SERIES TAB CONTACT, MULTILOCK	
O RELEASE FOR PROD. C8323		24-8-92		SCALE LOC SIZE DWG.No.	
I H.MISTRY		16-10-91		5/1 E A3 C345210	
REV APPROVED ECN DATE				REV B SHEET 1/1	

FORMAT 22/05/90R