

4

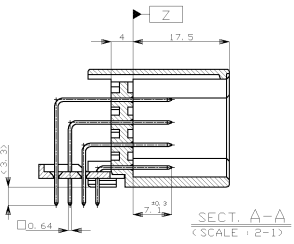
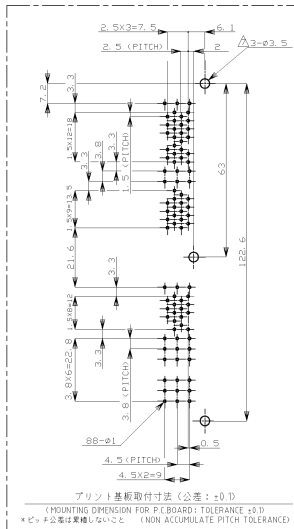
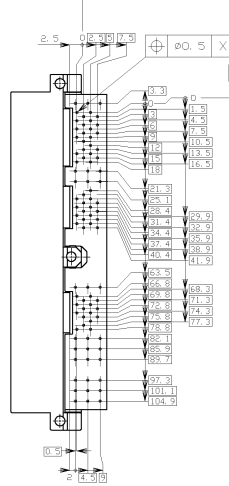
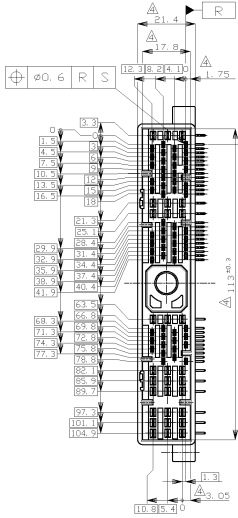
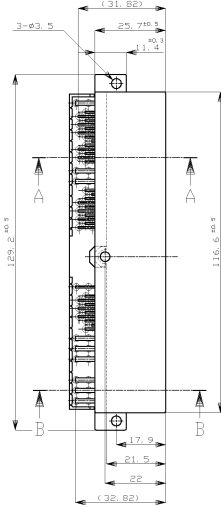
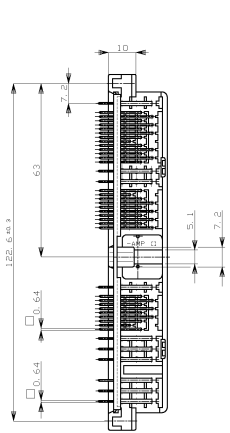
3

2

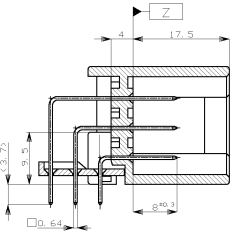
1

THIS DRAWING IS UNCLASSIFIED. RELEASED FOR PUBLICATION. BY TYCO ELECTRONICS CORPORATION. ALL INTERNATIONAL RIGHTS RESERVED.

REV	DATE	BY	CHK	APP	DESCRIPTION
J					
F	28FEB11	TS	KB		REDRAWN W/CHANGE ECR-11-004314

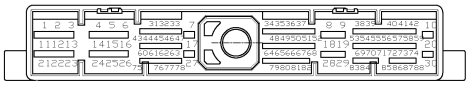


SECT. A-A (SCALE: 2-1)



SECT. B-B (SCALE: 2-1)

- 1. 適用プリント基板厚: 1.6mm
- 2. 推奨取付ネジ: 径φ 3mm小ネジ 又は JIS B1122 タッピングネジ、球径 4mm 長さ 8~12mm (締め付けトルク: 0.8~1.2N-m)
- 3. 取付用ネジのワッシャー番号: 178080
- △(穴径) 穴より2mmの範囲で測定
- △全面ニッケルメッキ上に接触部分は金メッキ
- △半田付部分は半田メッキ
- △金メッキ位置 (下部参照のこと)
- △タッピングネジを使用する場合、穴径は 4.5mm



GENERAL TOLERANCE	±0.2
1st DEC	±0.2
2nd DEC	±0.25
3rd DEC	±0.3
ANGLE	±3°

OBsolete	PRE-TINNED (69)	SELECTIVE GOLD (19)	△ 29.30.37~40.52.54~56.68~72.83~86	WHITE	3-178078-1
OBsolete	PRE-TINNED (68)	SELECTIVE GOLD (20)	△ 29.30.37~40.52~56.68~72.83~86	WHITE	2-178078-1
OBsolete	PRE-TINNED (77)	SELECTIVE GOLD (11)	△ 37~40.52.53.56.67.71.72.85	WHITE	178078-2
		PRE-TINNED (88)	-	WHITE	178078-1
		FINISH OF CONTACT	△ 37~40.52.53.56.67.71.72.85	CIRCUIT NO. OF GOLD PLATED CONTACT	PART NUMBER
		△ (穴径) 穴より2mmの範囲で測定		△ (穴径) 穴より2mmの範囲で測定	△ (穴径) 穴より2mmの範囲で測定

THIS DRAWING IS A CONTROLLED DOCUMENT		DATE	28FEB11	BY	TS	CHK	KB	APP	
DIMENSIONS: mm		DATE	28FEB11	BY	TS	CHK	KB	APP	
MATERIAL: HOUSING: PBT CONTACT: BRASS		DATE	28FEB11	BY	TS	CHK	KB	APP	
FINISH: -		DATE	28FEB11	BY	TS	CHK	KB	APP	
MATERIAL: HOUSING: PBT CONTACT: BRASS		DATE	28FEB11	BY	TS	CHK	KB	APP	
FINISH: -		DATE	28FEB11	BY	TS	CHK	KB	APP	

DATE	28FEB11	BY	TS	CHK	KB	APP	
DATE	28FEB11	BY	TS	CHK	KB	APP	
DATE	28FEB11	BY	TS	CHK	KB	APP	
DATE	28FEB11	BY	TS	CHK	KB	APP	
DATE	28FEB11	BY	TS	CHK	KB	APP	

DATE	28FEB11	BY	TS	CHK	KB	APP	
DATE	28FEB11	BY	TS	CHK	KB	APP	
DATE	28FEB11	BY	TS	CHK	KB	APP	
DATE	28FEB11	BY	TS	CHK	KB	APP	
DATE	28FEB11	BY	TS	CHK	KB	APP	