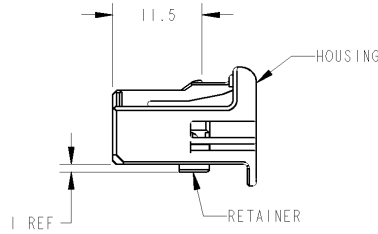
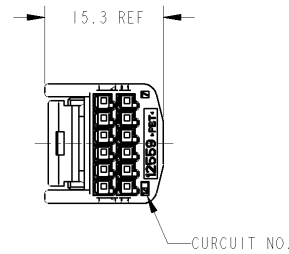
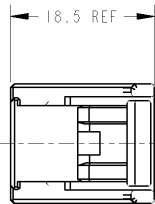
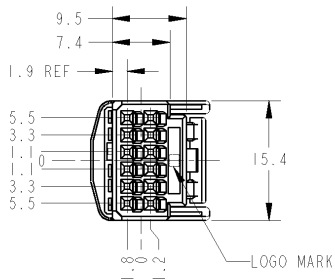


THIS DRAWING IS UNPUBLISHED. RELEASED FOR PUBLICATION  
 © COPYRIGHT BY TYCO ELECTRONICS CORPORATION. ALL RIGHTS RESERVED.

LOC	DIST	REVISIONS						
		F	LTR	DESCRIPTION	ECN	DATE	DWN	APVD
		0		RELEASED	FJA0-0387-04	13AUG04	YM	HY
		01		REVISED	ECR-05-013653	20OCT05	AY	HY
		02		REVISED	ECR-06-018044	28JUL06	KF	HY
		A		REVISED	ECR-10-007503	21APR10	TS	KB



1. RETAINER SHOULD BE PRE-ASSEMBLED CONDITION TO HOUSING.
2. INSTRUCTION SHEET NO.411-78080.
3. PART NUMBER OF CAP HOUSING TO BE MATED : SEE TABLE-1
4. APPLIED TERMINALS : SEE TABLE-2

1. プラグハウジングとリテーナを仮止して出荷される
2. 取扱説明書NO.411-78080
3. 適合相手型番 : TABLE-1参照
4. 適用端子 : TABLE-2参照

TABLE-1

POS 種数	CAP ASSEMBLY PART NO. キャップ番号
12	1318772

TABLE-2

		TERMINAL NO. 端子型番	APPLICABLE WIRE RANGE 適用電線
SIGNAL 0.64111	TIN	1674311-1	AVSS/CAVS/CAVUS/AVSSH-f 0.3~0.5mm <sup>2</sup>
	SELECTIVE GOLD	1674311-2	

THIS DRAWING IS A CONTROLLED DOCUMENT FOR TYCO ELECTRONICS CORPORATION IT IS SUBJECT TO CHANGE AND THE CONTROLLING ENGINEERING ORGANIZATION SHOULD BE CONTACTED FOR THE LATEST REVISION.		DWN Y. MITO	13AUG04	Tyco Electronics Corporation Kawasaki, Japan	NAME 0.64111 CONNECTOR 2ROW 12POSITION PLUG ASSEMBLY SHORT BODY
DIMENSIONS: mm		CHK H. YAMAGAMI	13AUG04		
TOLERANCES UNLESS OTHERWISE SPECIFIED: 一般公差 ±0.3 0-PLC ± 1-PLC ± 2-PLC ± 3-PLC ± 4-PLC ± ANGLES ± 3°00'		APVD S. ISHATA	13AUG04		
MATERIAL PBT		FINISH SEE TABLE		PRODUCT SPEC 108-5931 APPLICATION SPEC 114-5329	SIZE A3
		WEIGHT 1.92g		CAGE CODE 00779	DRAWING NO 1746872
CUSTOMER DRAWING				SCALE 2:	RESTRICTED TO