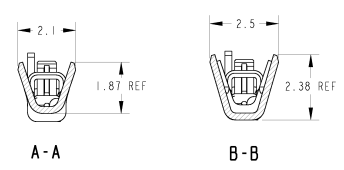
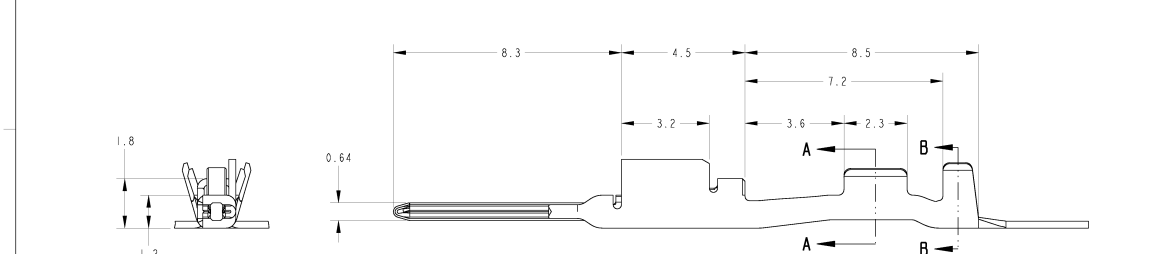
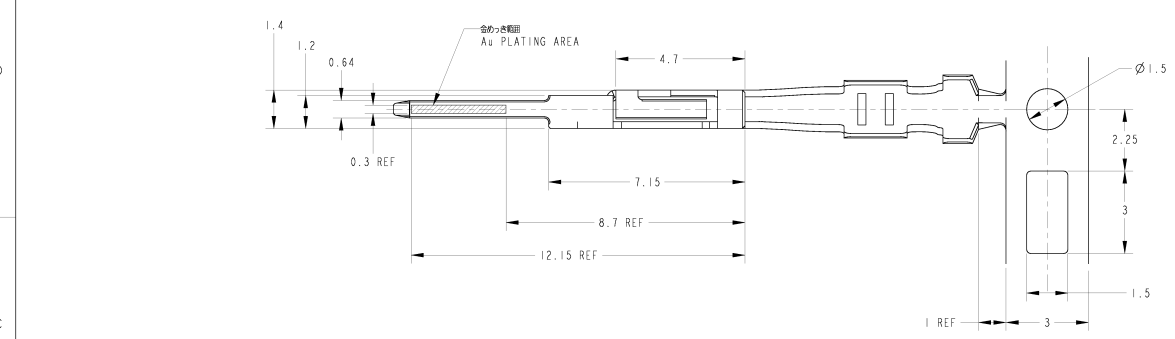


| REVISIONS | | | | | |
|-----------|---------------------------|-----|-----------|-----|------|
| REV | DESCRIPTION | CHK | DATE | DRW | APVD |
| A3 | REVISED PER ECO-11-005140 | | 02APR2011 | RK | HMR |



- 適用範囲; AVSS, AVSSH-f 0.3-0.5mm²
CAVUS, CAVUS 0.22-0.5mm²
CHFUS 0.5mm²
HFSS-f 0.5mm²
 - アプリアーフィーダのピッチ; 7.5mm
 - バネ端子番号:
PRE-TIN; 1376607-1
SELECTIVE GOLD; 1376607-2
- APPLICABLE WIRE RANGE;
AVSS, AVSSH-f 0.3-0.5mm²
CAVUS, CAVUS 0.22-0.5mm²
CHFUS 0.5mm²
HFSS-f 0.5mm²
 - APPLICATOR FEED; 7.5mm
 - P/N OF LOOSE PIECE;
PRE-TIN; 1376607-1
SELECTIVE GOLD; 1376607-2

| | |
|----------------|-----------|
| SELECTIVE GOLD | 1376109-2 |
| PRE-TIN | 1376109-1 |
| FINISH | PART NO. |

THIS DRAWING IS A CONTROLLED DOCUMENT. DWG T. KOHNO 09-JUL-04
CHK N. SAI 09-JUL-04
APPD K. SHIMIZU 09-JUL-04

| | |
|--|-------|
| TO TOLERANCES UNLESS OTHERWISE SPECIFIED | SCALE |
| 0-PAC ±0.3 | 1:1 |
| 1-PAC ±0.5 | |
| 2-PAC ±0.13 | |
| 3-PAC ±0.13 | |
| 4-PAC ±0.050 | |
| ANGLES ±3° | |
| FINISH | |

PRODUCT SPEC: 14-529
APPLICATION SPEC: 14-529
WEIGHT: 0.19g

SIZE: A2 CAGE CODE: 1376109
DRAWING NO: 1376109
REV: A.3

025 TAB CONTACT
TE Connectivity

WIRE RANGE: 0.22-0.56mm² TOLERATION DIA: 0.95-1.7

SEE TABLE CUSTOMER DRAWING