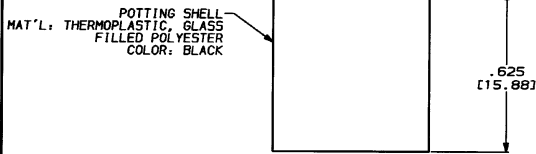
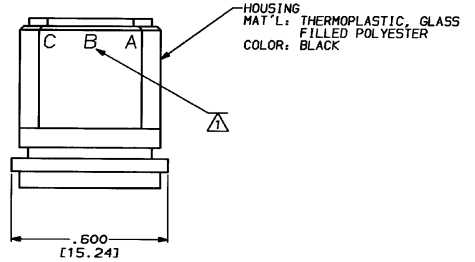
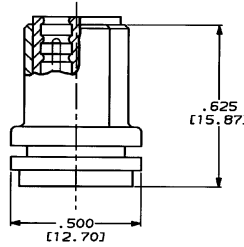
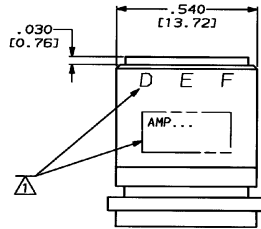
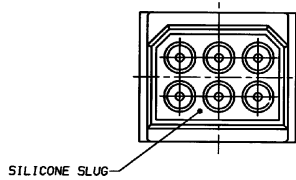


4
DRAWING MADE TO THIRD ANGLE PROJECTION
THIS DRAWING IS UNPUBLISHED. RELEASED FOR PUBLICATION .19
COPYRIGHT 19 BY AMP INCORPORATED. ALL INTERNATIONAL RIGHTS RESERVED.

PROD	LOC	QTY	REV	ZONE	LTR	DESCRIPTION	DATE	APPD
4081	DF	50			A	REV & REDRAWN; DF-6961	CT	10-93
DE								



PIN, 6 PLC
MAT'L: BRONZE PER ASTM-B-140
FINISH: GOLD PLATED PER MIL-G-45204 TYPE II
OVER NICKEL PER QQ-N-290

MARKED PER MIL-STD-130.

2. SEE AMP DWG. B63349-1 FOR ASSEMBLY INSTRUCTIONS.

867482-1

PART NO.

DO NOT SCALE PRINT. UNLESS SPECIFIED DIMENSIONS IN INCHES (mm) TOLERANCES: OM ± 2 PLC DEC ± .005 (0.13) 3 PLC DEC ± .005 (0.13) ANGLES ±	DR 6-30-93 C.C. THOMAS CHK 10-13-93 D.EABY APRD 10-13-93 C.C. THOMAS PRODUCT SPEC	NAME AMP AMP Incorporated Harrisburg, PA 17105-3608 6 PIN SUBMINIATURE PLUG KIT, LGH
MATERIAL SEE CALLOUTS	APPLICATION SPEC	SIZE CAGE CODE DRAWING NO
FINISH SEE CALLOUTS	WEIGHT	SCALE 4:1

THIS DRAWING IS A CONTROLLED DOCUMENT FOR AMP INCORPORATED. IF IN SUBJECT TO CHANGE AND THE CONTROLLING ENGINEERING ORGANIZATION SHOULD BE CONTACTED FOR THE LATEST REVISION.

AMP 1471-8 REV 2-92

APPROVED FOR PUBLICATION USE ONLY

CUSTOMER DRAWING