

4

3

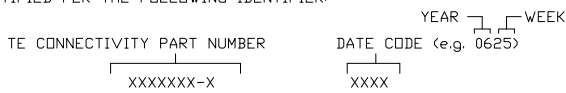
2

1

THIS DRAWING IS UNPUBLISHED.		RELEASED FOR PUBLICATION		EC	LOC	DIST	REVISIONS					
COPYRIGHT - By -		ALL RIGHTS RESERVED.		CPR	-	-	P	LTR	DESCRIPTION	DATE	DWN	APVD
							A1		REVISED PER ECO-11-005150	21MAR11	RK	HMR

POSITION	CONTACT SIZE	RATING	NOM INSERTION FORCE	NOM EXTRACTION FORCE
39 - 40	#4	125A/250 VOLTS	3.8lbs/1.72Kg	3.0lbs/1.36Kg
7 - 38	#20	5A/250 VOLTS	.2Lbs/.09Kg	.1Lbs/.05Kg
1 - 6	#12	35A/250 VOLTS	2.9Lbs/1.32Kg	1.9Lbs/.86Kg

- 8. REFERENCE ELCON PART NUMBER 241-27-01100.
- 7. SEE DRAWING C-1648156 FOR MATING SOCKET CONNECTOR.
- 6. ITEMS PROVIDED TO THIS SPECIFICATION TO BE PERMANENTLY IDENTIFIED PER THE FOLLOWING IDENTIFIER:



- 5. ALL DIMENSIONS SHOWN ACROSS A CENTERLINE (⌀) SHALL BE CENTRALIZED WITHIN THE TOLERANCE INDICATED FOR THAT DIMENSION.
- 4. A REFERENCE DIMENSION (.XXX) IS WITHOUT TOLERANCE AND USED FOR INFORMATION PURPOSE ONLY.
- 3. RECOMMENDED MOUNTING HARDWARE: TO BE ORDERED SEPARATELY.
 - FOR PANEL MOUNTING, USE
 - 1650402-1: SHOULDER SCREW, #8-32
 - 1650106-1: SHOULDER SCREW, #6-32
 - 1650589-1: SHOULDER SCREW, M4X0.7
 - FOR PCB MOUNTING, USE COMMERCIALLY AVAILABLE SCREW AND WASHER (IF REQUIRED).

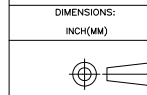
- 2. MATERIALS:
 - HOUSING: THERMOPLASTIC, GLASS REINFORCED, COLOR-BLACK UL94V-0 FLAMMABILITY RATED.
 - RETENTION CLIP: COPPER ALLOY OR STAINLESS STEEL

- 1. PART NUMBER CHANGES AND OR DESIGN CHANGES AFFECTING ITEM INTERCHANGEABILITY REQUIRE PRIOR TE CONNECTIVITY APPROVAL AND AUTHORIZATION BY REVISION TO THIS DRAWING.

NOTES: UNLESS OTHERWISE SPECIFIED

1648151-1		AS SHOWN	
PART NUMBER		DESCRIPTION	
STE TE Connectivity			
CONNECTOR, PIN HOUSING 2X#4, 32X#20, 6X#12, FLOAT MOUNT 125A MIDDLE DRAWER			
SIZE	CAGE CODE	DRAWING NO	RESTRICTED TO
A3	00779	C-1648151	-
CUSTOMER DRAWING			SCALE 1:1 SHEET 1 OF 3 REV A1

THIS DRAWING IS A CONTROLLED DOCUMENT.		DWN	03/25/06
		CHK	-
		APVD	03/25/06
		NAME	STEVE FLICKINGER
		PRODUCT SPEC	-
		APPLICATION SPEC	-
		WEIGHT	-
		MATERIAL FINISH	
		-	



DIMENSIONS:		TOLERANCES UNLESS OTHERWISE SPECIFIED:	
INCH(MM)			
0 PLC	± .005	± .005	
1 PLC	± .005	± .005	
2 PLC	± 0.02(0.3)	± 0.02(0.3)	
3 PLC	± 0.010(0.25)	± 0.010(0.25)	
4 PLC	± .005	± .005	
ANGLES	± 0.5°	± 0.5°	

4

3

2

1

THIS DRAWING IS UNPUBLISHED.

RELEASED FOR PUBLICATION

ALL RIGHTS RESERVED.

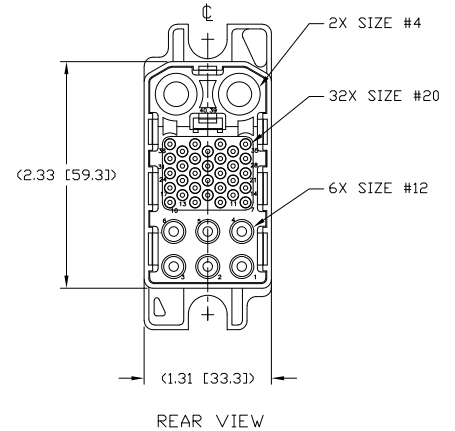
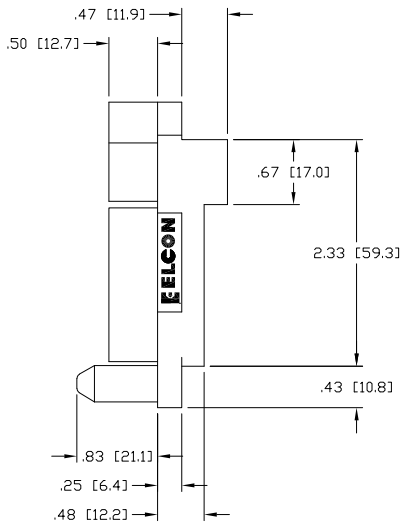
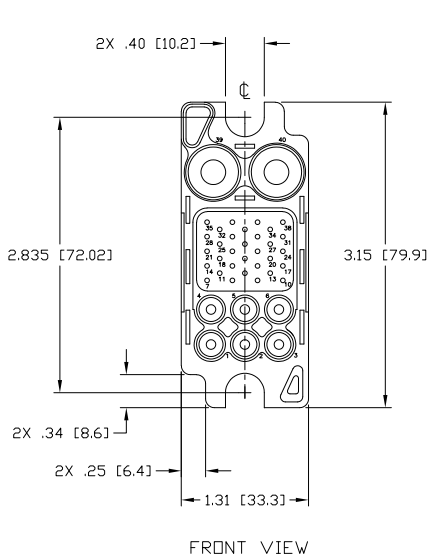
EC

LOC

DIST

REVISIONS

P	LTR	DESCRIPTION	DATE	DWN	APVD
-	-	SEE SHEET 1	-	-	-



THIS DRAWING IS A CONTROLLED DOCUMENT.		DWN HA NGUYEN 03/25/06		
DIMENSIONS: INCH(MM)		CHK -		
TOLERANCES UNLESS OTHERWISE SPECIFIED:		APVD STEVE FLICKINGER 03/25/06	NAME CONNECTOR, PIN HOUSING 2X#4, 32X#20, 6X#12, FLOAT MOUNT 125A MIDDLE DRAWER	
		PRODUCT SPEC -	RESTRICTED TO	
MATERIAL -		FINISH -	APPLICATION SPEC -	SIZE A3
		WEIGHT -	CAGE CODE 00779	DRAWING NO C-1648151
CUSTOMER DRAWING			SCALE 1:1	SHEET 2 of 3
			REV A1	

4

3

2

1

THIS DRAWING IS UNPUBLISHED.

RELEASED FOR PUBLICATION

ALL RIGHTS RESERVED.

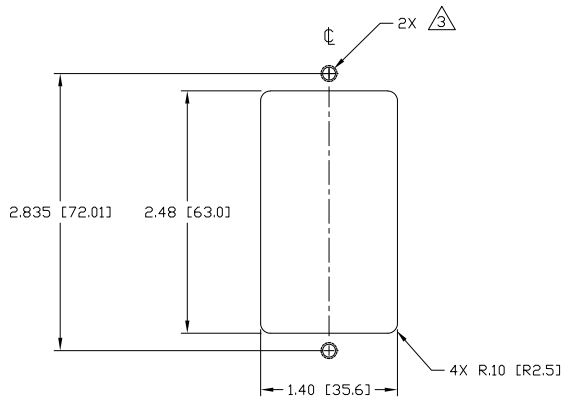
EC

LOC

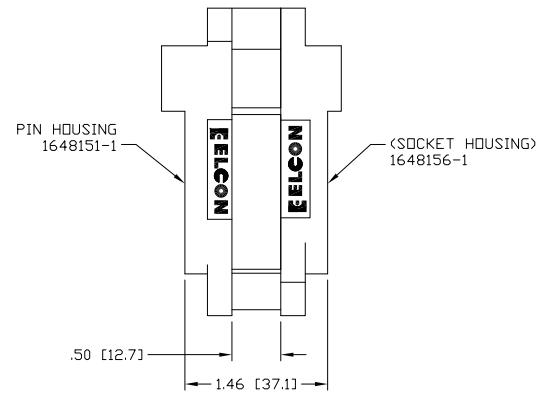
DIST

REVISIONS

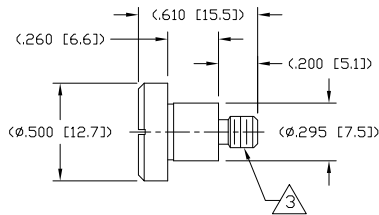
P	LTR	DESCRIPTION	DATE	DWN	APVD
-	-	SEE SHEET 1	-	-	-



RECOMMENDED PANEL CUTOUT AS VIEWED FROM CONNECTOR MOUNTING SIDE (FRONT VIEW)



MATED CONDITION



SHOULDER SCREW SCALE 2:1 SHOWN FOR REFERENCE ONLY

THIS DRAWING IS A CONTROLLED DOCUMENT.

DWN 03/25/06

CHK HA NGUYEN

TE TE Connectivity

DIMENSIONS:	TOLERANCES UNLESS OTHERWISE SPECIFIED:
INCH(MM)	

0 PLC	± -
1 PLC	± -
2 PLC	± 0.02(0.3)
3 PLC	± 0.010(0.25)
4 PLC	± -
ANGLES	± 0.5°
MATERIAL	FINISH

APVD 03/25/06

NAME STEVE FLICKINGER

PRODUCT SPEC

APPLICATION SPEC

WEIGHT

CUSTOMER DRAWING

SIZE A3

CAGE CODE 00779

DRAWING NO. 1648151

RESTRICTED TO

SCALE 1:1

SHEET 3 OF 3

REV A1