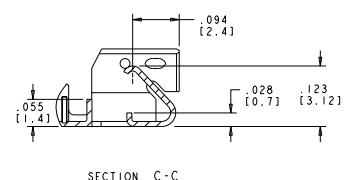
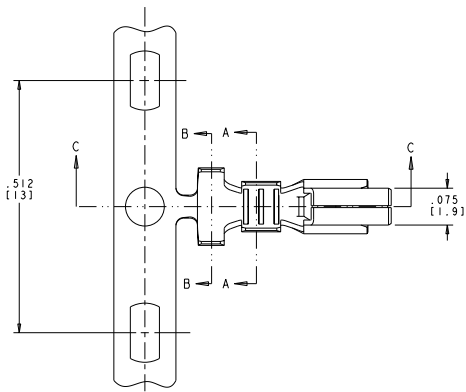
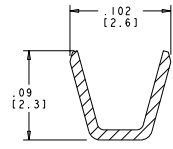
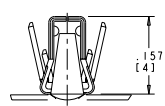
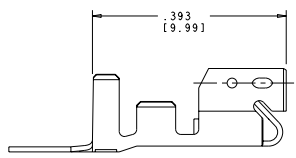
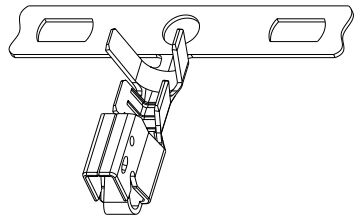


DATE DRAWING TO IMPROVISE: ALL RIGHTS RESERVED
 RECEIVED FOR FABRICATION: ALL RIGHTS RESERVED

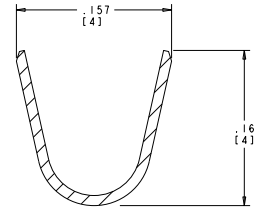
REV	DATE	DESCRIPTION	BY	CHK	APP
00		CM			
01		REVISED PER ECO-11-010402			



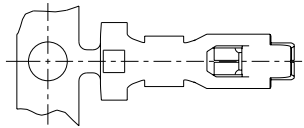
- △ FINISH: 0.8μM PRE-TIN OVER 0.5μM MIN COPPER.
- 2. WIRE RANGE: 22-18 AWG
- 3. CONTACTS COATED WITH ANTI-FRETTING LUBRICANT.



SECTION A-A
SCALE 20:1



SECTION B-B
SCALE 20:1



FINISH	PHOS BRONZE	1744144-2
	MATERIAL	PART NO



THIS DRAWING IS A CONTROLLED DOCUMENT. **TE CONNECTIVITY**

DATE: 02/20/2005
 DRAWN BY: J. ELLIS
 CHECKED BY: J. ELLIS
 APPROVED BY: J. ELLIS

INCHES (MM)
 1/16 (1.5875)
 1/8 (3.175)
 3/16 (4.7625)
 1/4 (6.35)
 5/16 (7.9375)
 3/8 (9.525)
 7/16 (11.1125)
 1/2 (12.7)
 5/8 (15.875)
 3/4 (19.05)
 7/8 (22.225)
 1 (25.4)

APPLICATOR SPEC: CONTACT, LANCELESS, STD. ECONOMY POWER II

STATE: CA
 CITY: SAN JOSE
 ZIP: 95128

DATE: 02/20/2005
 TIME: 10:11 AM
 CUSTOMER DRAWING