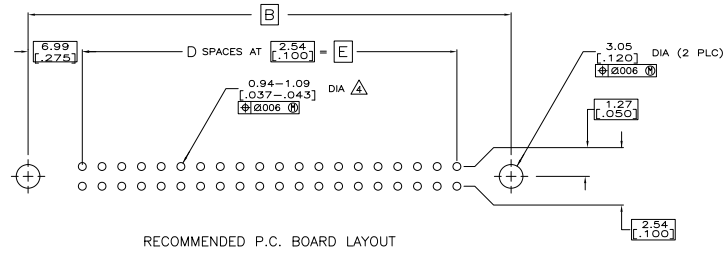
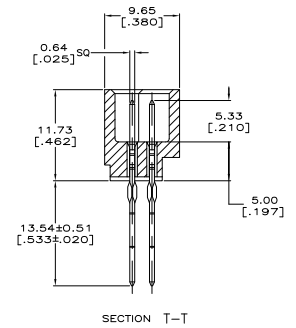
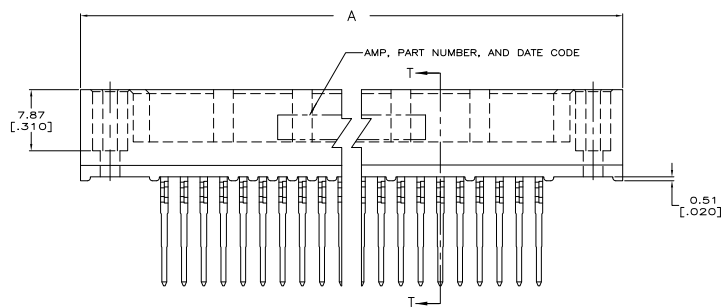
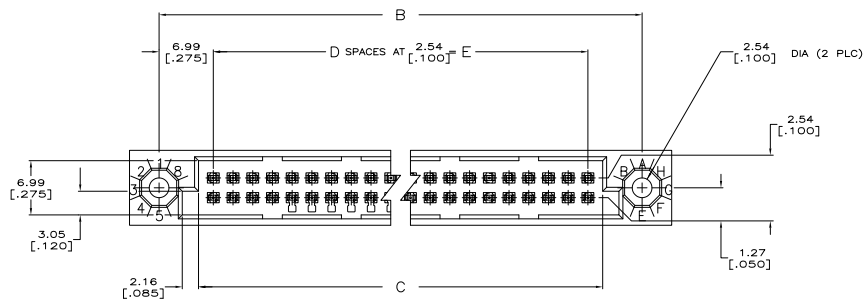


THIS DRAWING IS UNPUBLISHED. REPRODUCED FOR INFORMATION ONLY. ALL RIGHTS RESERVED.

REV	DATE	DESCRIPTION	BY	CHK
AD	25			
U		REVISED PER EC 0513-0387-05		JDF/AMS
UT		REVISED PER EC0-09-021510		1158P08 KK/AEG



RECOMMENDED P.C. BOARD LAYOUT

THIS DRAWING IS A CONTROLLED DOCUMENT.		DATE	BY	CHK
DATE		DATE	DATE	DATE
DRAWN BY		TYPED BY		
CHECKED BY		APPROVED BY		
PROJECT NAME		PROJECT NO.		
DRAWING NO.		REV. NO.		
DATE		DATE		
BY		BY		
CHK		CHK		
APP		APP		
CUST. DRAWING		CUST. DRAWING		

THIS DRAWING IS UNAPPROVED FOR PRODUCTION
 ALL RIGHTS RESERVED

REV	DATE	BY	CHK	DESCRIPTION	DATE	BY	CHK
AD	25			SEE SHEET 1			

- △ HOUSING MATERIAL: THERMOPLASTIC, COLOR-NATURAL.
- △ CONTACT MATERIAL: PHOSPHOR BRONZE.
- △ CONTACT FINISH: .00127-.00254 [.000050-.000100] NICKEL UNDERPLATE ALL OVER; .00076 [.000030] GOLD PLATE IN CONTACT AREA, TIN-LEAD PLATED POSTS.
- △ ACTION PIN POSTS REQUIRE 2.36 [.093] MIN THICK P.C. BOARD. RECOMMENDED P.C. BOARD HOLES ARE 1.151 [.0453] DIA PLATED THRU WITH 0.025-0.076 [.001-.003] COPPER, WITH 0.0076 [.0003] MIN TIN-LEAD PLATING; FINISHED HOLE AFTER PLATING 0.94-1.09 [.037-.043] DIA.
- △ PART NUMBER IS OBSOLETE.
- △ OBSOLETE PARTS: OBSOLETE CIS STREAMLINING PER D.RENAUD/D.SINISI

△	210.82	83	214.63	224.79	232.41	168	2-533060-1
	[8.300]		[8.450]	[8.850]	[9.150]		
△	215.90	85	219.71	229.87	237.49	172	2-533060-0
	[8.500]		[8.650]	[9.050]	[9.350]		
△	226.06	89	229.87	240.03	247.65	180	1-533060-8
	[8.900]		[9.050]	[9.450]	[9.750]		
△	200.66	79	204.47	214.63	222.25	160	1-533060-6
	[7.900]		[8.050]	[8.450]	[8.750]		
△	187.96	74	191.77	201.93	209.55	150	1-533060-4
	[7.400]		[7.550]	[7.950]	[8.250]		
△	175.26	69	179.07	189.23	196.85	140	1-533060-3
	[6.900]		[7.050]	[7.450]	[7.750]		
△							1-533060-2
△							1-533060-1
△							1-533060-0
△	124.46	49	128.27	138.43	146.05	100	533060-9
	[4.900]		[5.050]	[5.450]	[5.750]		
△							533060-8
△							533060-7
△							533060-6
△							533060-5
△	60.96	24	64.77	74.93	82.55	50	533060-4
	[2.400]		[2.550]	[2.950]	[3.250]		
△							533060-3
△							533060-2
△							533060-1

△ OBSOLETE

E	D	C	B	A	POSN	PART NUMBER

THIS DRAWING IS A CONTROLLED DOCUMENT. SEE THE SEERIES 8137-01 OF KIEHLER

INCHES (mm) INCHES

UNLESS OTHERWISE SPECIFIED: DIMENSIONS ARE IN INCHES

PROF: [Signature]

DATE: [Date]

REV: [Revision]

REVISED TO: [Revision]

CUSTOMER DRAWING

THIS DRAWING IS A CONTROLLED DOCUMENT. SEE THE SEERIES 8137-01 OF KIEHLER

DATE: [Date]

REV: [Revision]

REVISED TO: [Revision]

CUSTOMER DRAWING

DATE: 4.1

REV: 2

REVISED TO: UI