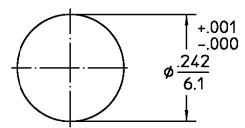


DESIGNED FOR USE WITH		REVISIONS			
.141 S/R		REV	DESCRIPTION	DATE	APPROVED
CABLE ENTRY DIAMETER MINIMUM		01 ₁	REDRAWN IN CAD PER ECN 98-0001	PATLAN 2/20/98	<i>[Signature]</i>
HOUSING	.143	B	PER EC 0U20-0262-01	11DEC01	C. Hoang
CONTACT	.037				



RECOMMENDED MOUNTING HOLE

- NOTES:
1. CAPTURED CENTER CONTACT.
 2. PICTORIAL VIEW IS AFTER CRIMPING.
 3. .307 MINIMUM STRAIGHT CABLE LENGTH.
 4. SUGGESTED TO BEND CABLE PRIOR TO CRIMPING.

	DIM 'A'
BEFORE CRIMP	.777 REF. 19.7
AFTER CRIMP	.662 ±.010 16.8

ELECTRICAL	MECHANICAL	ENVIRONMENTAL
Nominal Impedance (Ohms) 50	Interface Dimensions ML-STD-348, Fig 321-1	Temperature Rating -65° to +125°C
Frequency Range (GHz) DC to 18	Mating Characteristics:	Vibration MIL-STD-202, Method 204, Condition D
Volt Rating (VRMS MAX) Sea Level 335	Insertion (MAX Lbs) 3	Shock MIL-STD-202, Method 21B, Condition I
VSWR 1.05±.005f(GHz) DC to 18 GHz	Withdrawal (MIN Oz) 1	Thermal Shock MIL-STD-202, Method 107, Condition A
Insertion Loss (dB MAX) .03x√f(GHz)	Force to Engage (In-Lbs MAX) 3 & Disengage (In-Lbs MAX) 15	Moisture Resistance MIL-STD-202, Method 106
RF Leakage (dB MIN) (Interface Only, Fully Mated) -100-f(GHz)	Center Contact Captivation Axial (Lbs) 6	Corrosion - MIL-STD-202, Method 101, Condition B
Corona, 70,000 Ft (VRMS MIN) 335	Cable Retention Axial Force (Lbs MIN) 60	
Dielectric Withstanding Voltage (VRMS MIN) Sea Level 1000	Torque (In-Oz MIN) 15	
Contact Resistance (Milliohms MAX)	Weight (Grams) TBD	
Center Contact 2.0		
Outer Contact 2.0		
Cable to Housing 0.5		
RF High Potential Sea Level (VRMS MIN) 5 MHz 670		
IR (Megohms MIN) 5000		

COMPONENT	MATERIAL	FINISH
HOUSING BUSHING MOUNTING NUT LOCKWASHER	STAINLESS STEEL PER ASTM-A484 AND ASTM-A582, TYPE 303	PASSIVATE PER QQ-P-35
DIELECTRIC	PTFE FLUOROCARBON PER ASTM-D-1457	N/A
CENTER CONTACT	BERYLLIUM COPPER PER ASTM-B-196 OR ASTM-B-197, ALLOY C17300, CONDITION H	GOLD PLATE PER MIL-G-45204
O-RING	FLOUROSILICONE PER MIL-R-25988, CLASS 1, TYPE 1	N/A

UNLESS OTHERWISE SPECIFIED DIMENSIONS ARE IN INCHES	DRAWN BY D.CAM DATE 1/06/87	 AMP Incorporated 140 Fourth Avenue Waltham, MA 02451-7599
FRAC. DEC. ANGLES	CHECKED BY L.GROSS 6/18/87	
+ 1/64 +.005 * °	APPD BY BAR 6/18/87	
THESE DRAWINGS AND SPECIFICATIONS ARE THE PROPERTY OF M/A CDM INTERCONNECT DIV. AND SHALL NOT BE REPRODUCED OR COPIED OR USED IN WHOLE OR IN PART AS THE BASIS FOR THE MANUFACTURE OR SALE OF ITEMS WITHOUT WRITTEN PERMISSION.		TITLE OSP BULKHEAD FEEDTHRU CABLE PLUG REAR MOUNT-COMPRESSON CRIMP ATTACHMENT
NO. A.P. 45-023 408-04593		SIZE B CODE IDENT NO. 26805 SCALE 5:1
		REV 01 ₁ SHEET 1 OF 1

CUSTOMER DRAWING AMP PART # 1044836-1 SHEET 1 OF 1 REV B